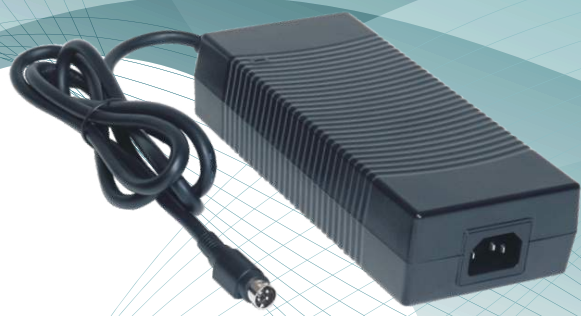


NEW

Level VI

CoC Tier 2



200 Watt Series

Desktop Type

ATS200T - P X X X

P : C14

O / P Current



Green Mode
 CEC, DoE Level VI, Energy Star, ErP Stage 2, CoC Tier 2, NRCan & GEMS
 No Load Power Consumption Less Than 0.15W

- Features :**
- 100-240 VAC Universal Input
 - Single Output to 200W
 - Regulated Output with Low Ripple Noise
 - Safety Agency Requirements and EMI/EMS Certified
 - Private Label Marking Available
 - Modified and Custom Design Available
 - 1 Year Warranty

Model	O/P Voltage	O/P Current	Watt
ATS200T-P120	12.0V	16.00A	192W
ATS200T-P135	13.5V	14.00A	189W
ATS200T-P190	19.0V	10.50A	200W
ATS200T-P240	24.0V	8.30A	200W
ATS200T-P480	48.0V	4.17A	200W
ATS200T-P560	56.0V	3.58A	200W

Input

Voltage	100-240VAC
Line Frequency	50-60Hz
Current	2.8A Max.
Protection	Internal Primary Current Fuse
Configuration	IEC60320/C14

Output

Load Regulation	±5% (Typical)
Ripple	2% Vp-p Max. for Output Voltage @ Full Load
Transient Response	0.5mS for 50% Load Change Typical
Hold-up Time	10mS @ Full Load
Protection	Short Circuit Protection / Over Voltage Protection / Over Current Protection / Over Temperature Protection
DC Cord	UL 2464 / 16AWG
Ferrite Core	No (Optional)

Safety Approvals
 CB / UL / cUL / FCC / GS / CE / PSE / BSMI / CCC / RCM

Electrical

Topology	LLC
Dielectric Withstand	3000VAC Primary - Secondary
Leakage Current	3.5mA @ 3Pin
Efficiency	DoE Level VI, Energy Star, ErP Stage 2, CoC Tier 2, NRCan & GEMS Certified
EMI Conduction & Radiation	Compliance to EN55022 Class B
Harmonic Current	Compliance to EN61000-3-2,3
EMS Immunity	Compliance to IEC61000-4-2,3,4,5,6,8,11
MTBF	300,000 Calculated Hours at 25°C , by Telcordia SR-332

Environmental

Operating Temperature	0 to + 40°C
Storage Temperature	-20 to + 80°C
Relative Humidity	Operating : 20 to 80% RH Storage : 10 to 90% RH
Cooling	Natural Convection Cooling

Mechanical

Case Dimension	L 183 × W 81 × H 42 (mm)
Weight	850g (Ref.)



RoHS