

NO	件號 PART. NO	名稱 NAME	材質 MATL	件數 SHFT	處理 TREAT	備註 REMARK
1	M-1602-RA-R	本體 BODY	Zn ALLOY	1	M-Ni	
2	M-1602-RE-R	彈性華司 SPRING WASHER	SUP3	1	M-Ni	
3	M-1602-RD-R	六角螺帽 NUT	COPPER ALLOY	1	M-Ni	
4	M-1606-RB-R	電木含針 INSULATOR	BAKELITE	1		
5	M-1606-RA-R	導針 CONTACT	COPPER ALLOY	6	M-Ni	

智慧財產權 請勿抄襲盜用

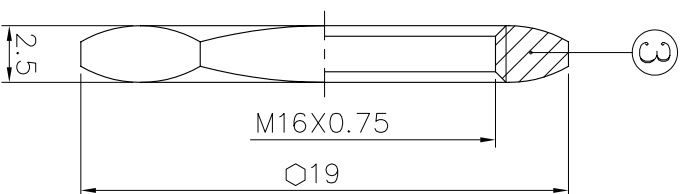
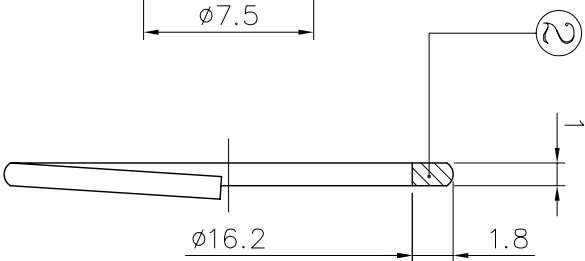
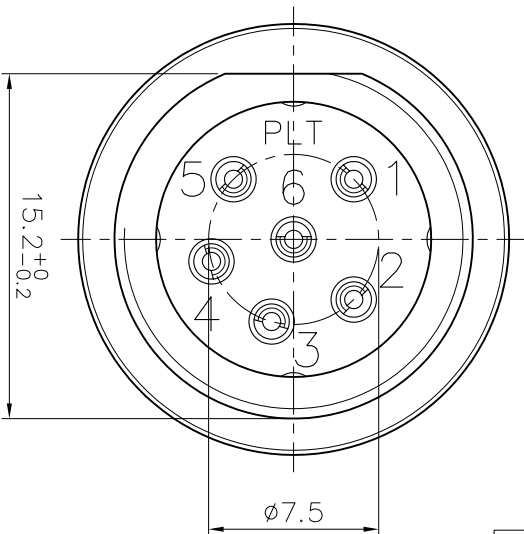
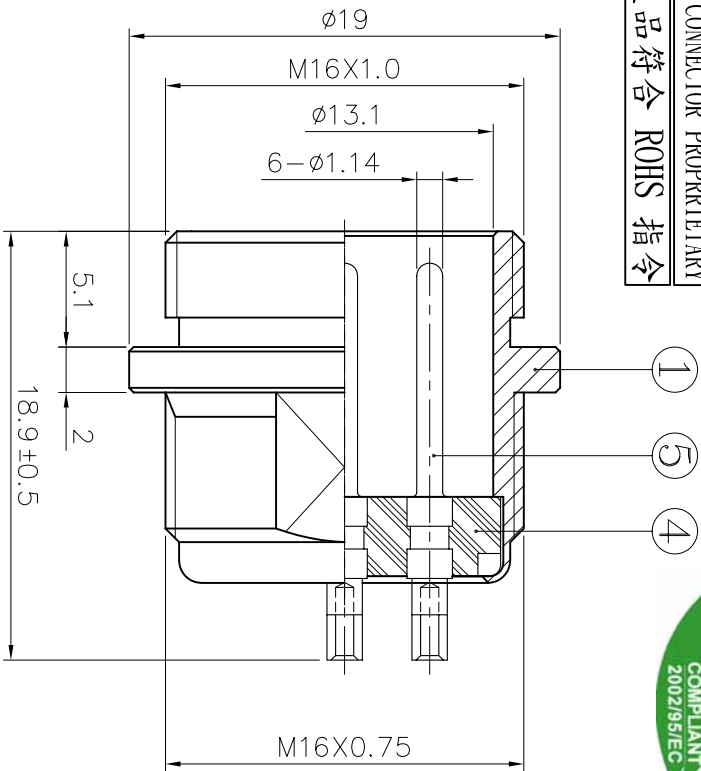
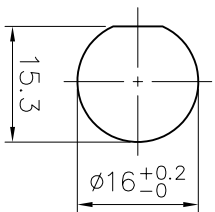
APEX CONNECTOR PROPRIETARY

本產品符合 ROHS 指令



ROHS COMPLIANT 2002/95/EC

MOUNTING HOLE  
(SCALE: 1/1)



NO.	ELECTRICAL CHARACTERISTICS
1	Rated Current/voltage 5A 125V
2	Operation limit voltage (AC.V.rms) 200
3	Withstanding voltage (AC.V.rms) 1 minute 1000
4	Insulation resistance(MΩ MIN.) at DC 500V 1000
5	Contact resistance (mΩ MAX.) at DC 1A 3

ISO-9001:2000 CERTIFIED MANUFACTURER

**PLT** 鋁鋼精密科技股份有限公司  
APEX CONNECTOR CO., LTD.

▲	變更說明
▲	

機種 MODEL	名稱 NAME
PLT-166-R-R	6 PIN CONNECTOR RoHS

日期 DATE	公差 TOLERANCE	單位 UNIT	比例 SCALE
2005.12.31	± 0.2	mm	3 X

設計 DESIGNER	開發部
2005.12.31	Judy

審核 CHECKED	核准 APPROVE
------------	------------