



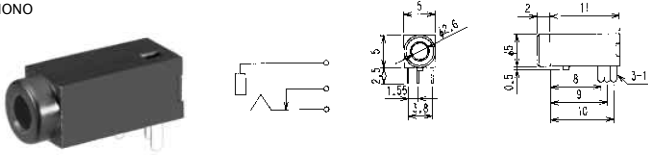
AUDIO PHONE PLUGS & JACKS

| 2-CONDUCTOR SUB-MINIATURE PLUGS | | 2.5 - 2極超小形単頭プラグ | |
|---|--|---|--|
| <p>2-CONDUCTOR SUB-MINIATURE PLUG MONO No. MP-101MH (2.5 -2 極) SCREW PART: PLASTICS No. MP-101A SCREW PART: METAL</p> | | <p>2-CONDUCTOR SUB-MINIATURE PLUG MONO No. MP-101ML (2.5 -2 極) SCREW PART: PLASTICS No. MP-101MLA SCREW PART: METAL</p> | |
| <p>No. MP-101MR (2.5 -2 極) 2-CONDUCTOR SUB-MINIATURE PLUG SCREW PART: PLASTICS MONO</p> | | <p>No. MP-101C (2.5 -2 極) 2-CONDUCTOR SUB-MINIATURE PLUG MONO w/shielded handle</p> | |
| <p>No. MP-022LN (2.5 -2 極) 2-CONDUCTOR SUB-MINIATURE RIGHT ANGLE PLUG MONO</p> | | | |
| 2-CONDUCTOR SUB-MINIATURE INLINE JACKS | | 2.5 - 2極超小形単頭ジャック | |
| <p>No. MJ-165 (2.5 -2 極) SUB-MINIATURE INLINE JACK MONO</p> | | <p>No. MJ-165A (2.5 -2 極) SUB-MINIATURE INLINE JACK MONO</p> | |
| <p>No. MJ-0252S (2.5 -2 極) 2-CONDUCTOR SUB-MINIATURE INLINE JACK MONO</p> | | | |

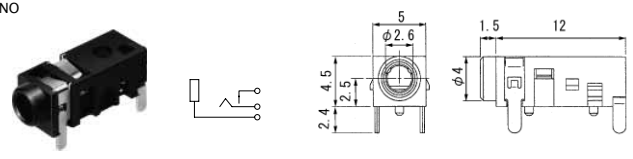
2-CONDUCTOR SUB-MINIATURE JACKS

2.5 - 2極超小形単頭ジャック

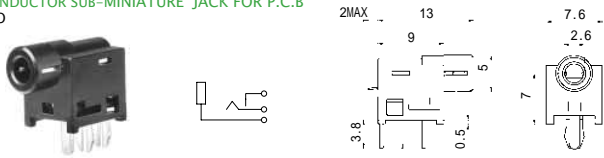
No.MJ-2625 (2.5 -2極)
2-CONDUCTOR SUB-MINIATURE JACK FOR P.C.B
MONO



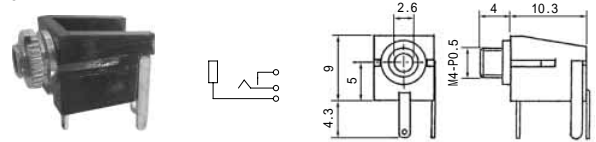
No.MJ-4625M (2.5 -2極)
2-CONDUCTOR SUB-MINIATURE JACK FOR P.C.B
MONO



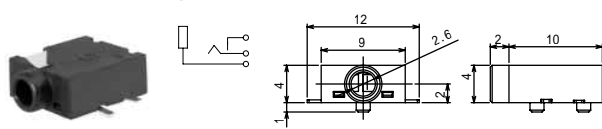
No.MJ-3425M (2.5 -2極)
2-CONDUCTOR SUB-MINIATURE JACK FOR P.C.B
MONO



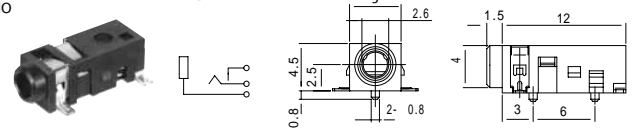
No.MJ-147D (2.5 -2極)
2-CONDUCTOR SUB-MINIATURE JACK FOR P.C.B
MONO



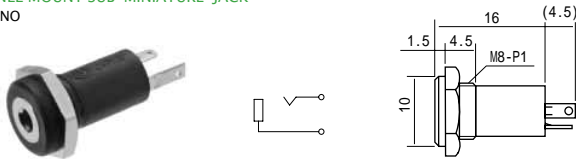
No.MJ-5325M (2.5 -2極) SMT
2-CONDUCTOR SUB-MINIATURE JACK FOR P.C.B
MONO



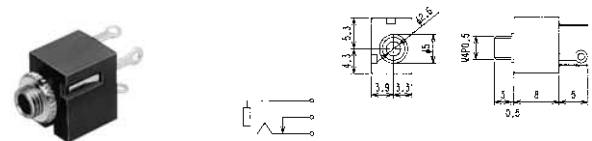
No.MJ-4125M (2.5 -2極) SMT
2-CONDUCTOR SUB-MINIATURE JACK FOR P.C.B
MONO



No.MJ-165H (2.5 -2極)
PANEL MOUNT SUB-MINIATURE JACK
MONO

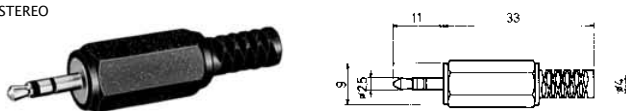


No.MJ-255 (2.5 -2極)
PANEL MOUNT SUB-MINIATURE JACK
MONO

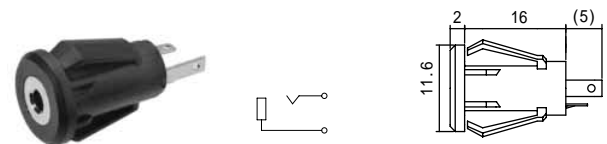


3-CONDUCTOR SUB-MINIATURE PLUGS

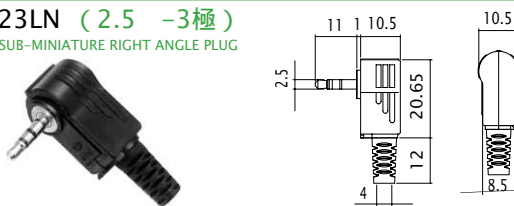
No.MP-025MH (2.5 -3極)
3-CONDUCTOR SUB-MINIATURE PLUG
STEREO



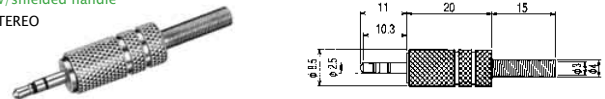
No.MJ-165SP (2.5 -2極)
SNAP-IN MOUNT SUB-MINIATURE JACK
MONO



No.MP-023LN (2.5 -3極)
3-CONDUCTOR SUB-MINIATURE RIGHT ANGLE PLUG
STEREO



No.MP-026L (2.5 -3極)
3-CONDUCTOR SUB-MINIATURE PLUG
w/shielded handle
STEREO

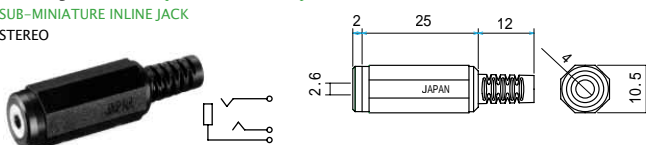


2.5 - 3極超小形単頭プラグ

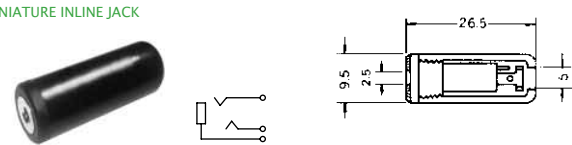
3-CONDUCTOR SUB-MINIATURE INLINE JACKS

2.5 - 3極超小形単頭ジャック

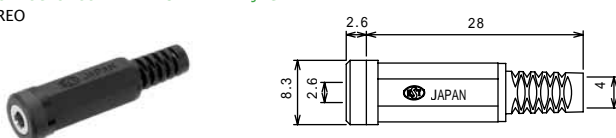
No.MJ-072 (2.5 -3極)
SUB-MINIATURE INLINE JACK
STEREO



No.MJ-071 (2.5 -3極)
SUB-MINIATURE INLINE JACK
STEREO



No.MJ-0253S (2.5 -3極)
3-CONDUCTOR SUB-MINIATURE INLINE JACK
STEREO



3-CONDUCTOR SUB-MINIATURE JACKS

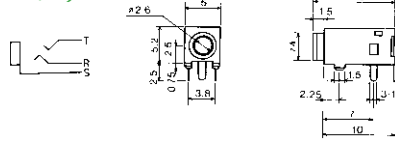
2.5 - 3極超小形単頭ジャック

3-CONDUCTOR SUB-MINIATURE JACK FOR P.C.B

No.MJ-2-348A0 (2.5 -3極) With Metal Sleeve

No.MJ-2-348B0 (2.5 -3極) Without Metal Sleeve

STEREO

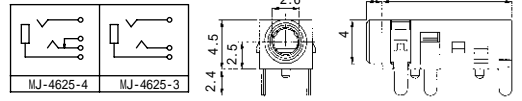


3-CONDUCTOR SUB-MINIATURE JACK FOR P.C.B

No.MJ-4625-3 (2.5 -3極)

No.MJ-4625-4 (2.5 -3極)

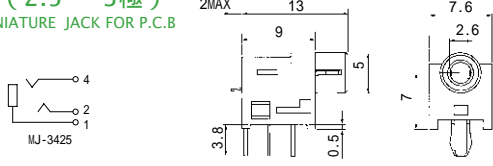
STEREO



No.MJ-3625 (2.5 -3極)

3-CONDUCTOR SUB-MINIATURE JACK FOR P.C.B

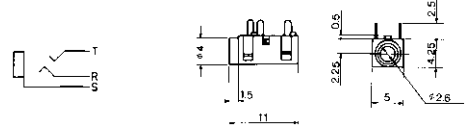
STEREO



No.MJ-A18 (2.5 -3極)

3-CONDUCTOR SUB-MINIATURE JACK FOR P.C.B

STEREO



3-CONDUCTOR SUB-MINIATURE JACK FOR P.C.B

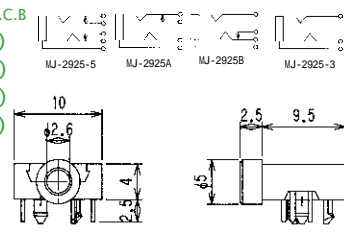
No.MJ-2925-5 (2.5 -3極)

No.MJ-2925A (2.5 -3極)

No.MJ-2925B (2.5 -3極)

No.MJ-2925-3 (2.5 -3極)

STEREO



3-CONDUCTOR SUB-MINIATURE JACK FOR P.C.B

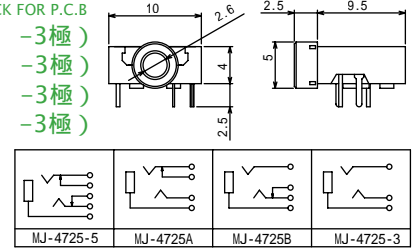
No.MJ-4725-5 (2.5 -3極)

No.MJ-4725A (2.5 -3極)

No.MJ-4725B (2.5 -3極)

No.MJ-4725-3 (2.5 -3極)

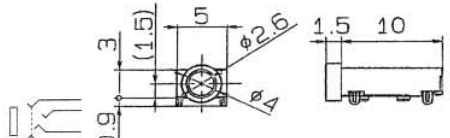
STEREO



No.M02-A04A0 (2.5 -3極)

3-CONDUCTOR SUB-MINIATURE JACK FOR P.C.B

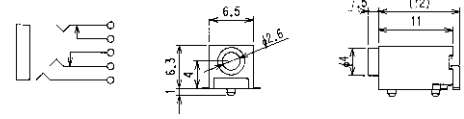
STEREO



No.M02-815A0 (2.5 -3極) SMT

3-CONDUCTOR SUB-MINIATURE JACK FOR P.C.B

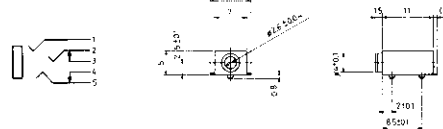
STEREO



No.M02-641A0 (2.5 -3極) SMT

3-CONDUCTOR SUB-MINIATURE JACK FOR P.C.B

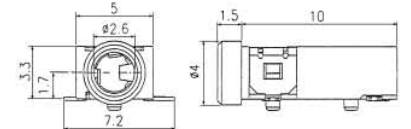
STEREO



No.MJ-7325 (2.5 -3極)

3-CONDUCTOR SUB-MINIATURE JACK FOR P.C.B

STEREO

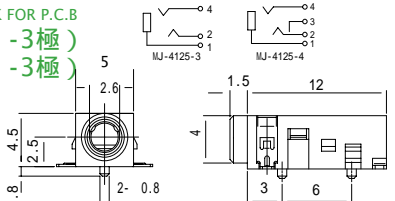


3-CONDUCTOR SUB-MINIATURE JACK FOR P.C.B

No.MJ-4125-3 (2.5 -3極)

No.MJ-4125-4 (2.5 -3極)

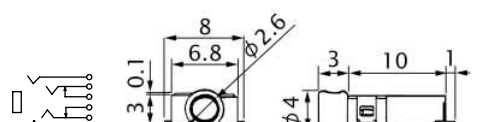
STEREO



No.M02-909A0 (2.5 -3極)

3-CONDUCTOR SUB-MINIATURE JACK FOR P.C.B

STEREO



3-CONDUCTOR SUB-MINIATURE JACK FOR P.C.B

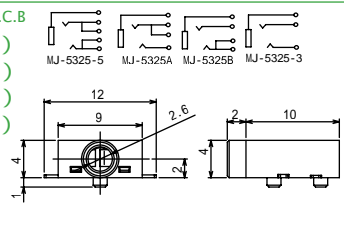
No.MJ-5325-5 (2.5 -3極)

No.MJ-5325A (2.5 -3極)

No.MJ-5325B (2.5 -3極)

No.MJ-5325-3 (2.5 -3極)

STEREO

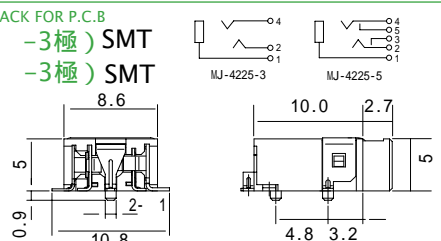


3-CONDUCTOR SUB-MINIATURE JACK FOR P.C.B

No.MJ-4225-3 (2.5 -3極) SMT

No.MJ-4225-5 (2.5 -3極) SMT

STEREO



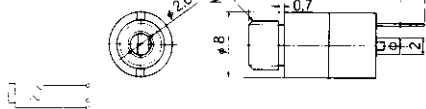
No.MJ-070N STEREO (2.5 -3極)

PANEL MOUNT SUB-MINIATURE JACK

No.MJ-070N0 STEREO (2.5 -3極)

SUB-MINIATURE JACK FOR P.C.B

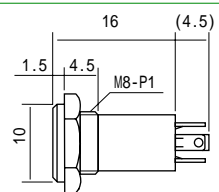
WITHOUT SCREW THREAD



No.MJ-071H (2.5 -3極)

3-CONDUCTOR SUB-MINIATURE JACK

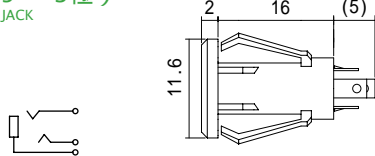
STEREO



No.MJ-071SP (2.5 -3極)

SNAP-IN MOUNT SUB-MINIATURE JACK

STEREO

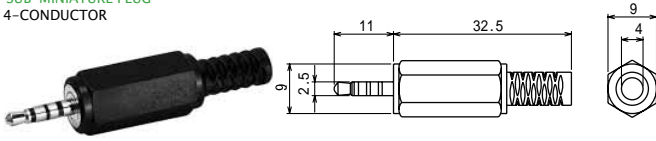


4-CONDUCTOR SUB-MINIATURE PLUGS

2.5 - 4極超小形単頭プラグ

No.MP-425 (2.5 -4極)

SUB-MINIATURE PLUG
4-CONDUCTOR



No.MP-425LN (2.5 -4極)

SUB-MINIATURE RIGHT ANGLE PLUG
4-CONDUCTOR



No.MC-4250 (2.5 -4極)

SUB-MINIATURE PLUG WITH 1.8M LONG CABLE
4-CONDUCTOR

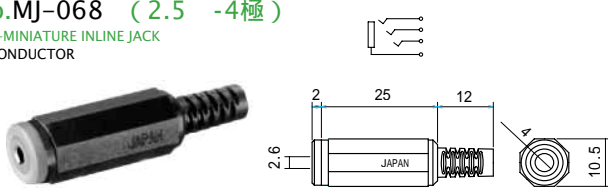


4-CONDUCTOR SUB-MINIATURE INLINE JACKS

2.5 - 4極超小形単頭ジャック

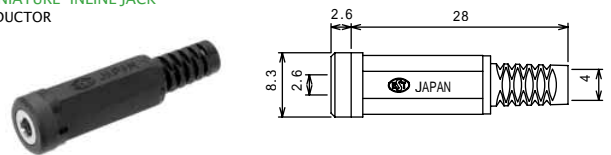
No.MJ-068 (2.5 -4極)

SUB-MINIATURE INLINE JACK
4-CONDUCTOR



No.MJ-0254S (2.5 -4極)

SUB-MINIATURE INLINE JACK
4-CONDUCTOR



4-CONDUCTOR SUB-MINIATURE PLUGS & JACKS

2.5 - 4極超小形単頭プラグ・ジャック

SUB-MINIATURE JACK FOR P.C.B

No.MJ-4225-4 (2.5 -4極)

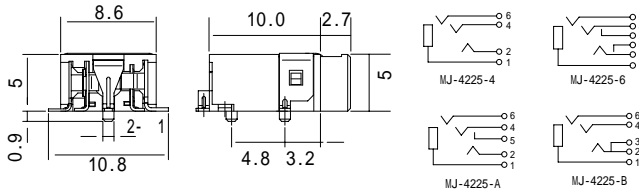
No.MJ-4225-6 (2.5 -4極)

No.MJ-4225-A (2.5 -4極)

No.MJ-4225-B (2.5 -4極)

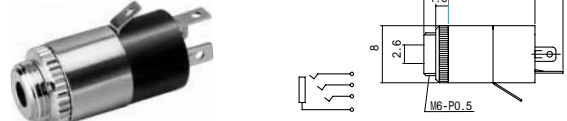
4-CONDUCTOR

SMT



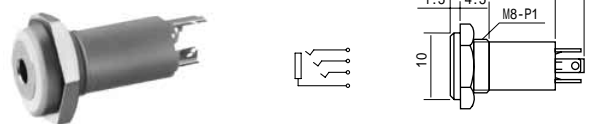
No.MJ-069 (2.5 -4極)

PANEL MOUNT SUB-MINIATURE JACK
4-CONDUCTOR



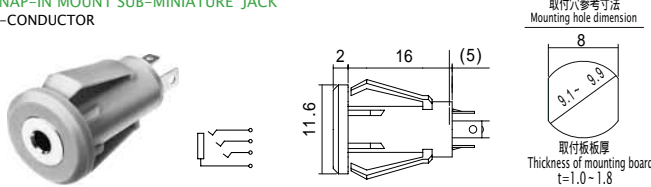
No.MJ-068H (2.5 -4極)

PANEL MOUNT SUB-MINIATURE JACK
4-CONDUCTOR



No.MJ-068SP (2.5 -4極)

SNAP-IN MOUNT SUB-MINIATURE JACK
4-CONDUCTOR



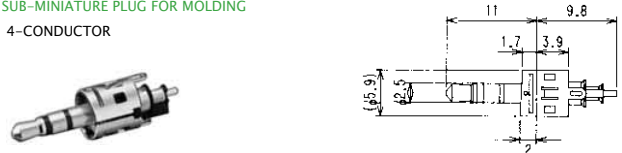
No.MC-254 (2.5 -4極)

SUB-MINIATURE PLUG WITH 1.8M LONG CABLE
4-CONDUCTOR



No.M19-442A (2.5 -4極)

SUB-MINIATURE PLUG FOR MOLDING
4-CONDUCTOR



No.M02-828A0 (2.5 -4極)

SUB-MINIATURE JACK FOR P.C.B SMT
4-CONDUCTOR

