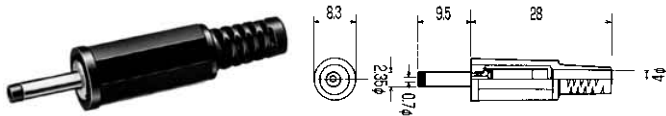


EIAJ RC5320A TYPE1 電圧区分1 適合品 RATING 定格: DC3.15V 2A

No.MP-201

2.35×0.7 DC PLUG
EIAJ RC5320A TYPE1 電圧区分1
(DC 3.15V Max)



No.MP-201LN

2.35×0.7 DC PLUG
EIAJ RC5320A TYPE1 電圧区分1
(DC 3.15V Max)



No.MC-5321

DC ADAPTOR CABLE L=1800mm
2.35×0.7
EIAJ RC5320A TYPE1 電圧区分1
(DC3.15V)



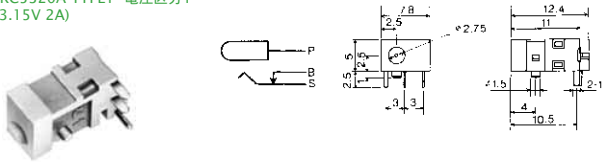
No.MC-5321L

DC ADAPTOR CABLE L=1800mm
2.35×0.7
EIAJ RC5320A TYPE1 電圧区分1
(DC3.15V)



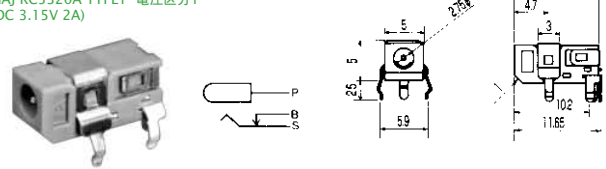
No.M04-446E0

DC JACK FOR P.C.B.
PLUG TYPE: 2.35×0.7
EIAJ RC5320A TYPE1 電圧区分1
(DC 3.15V 2A)



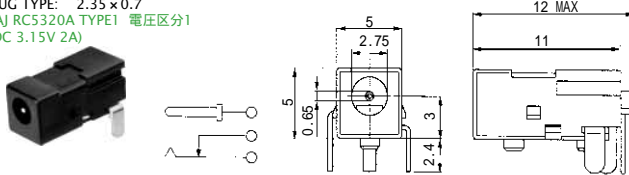
No.M04-595A0

DC JACK FOR P.C.B.
PLUG TYPE: 2.35×0.7
EIAJ RC5320A TYPE1 電圧区分1
(DC 3.15V 2A)



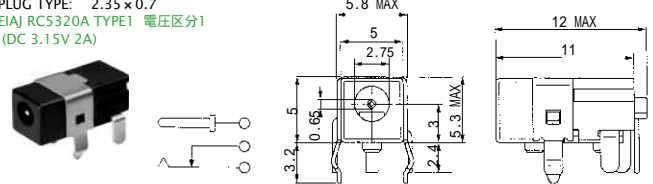
No.M04-450DJ

DC JACK FOR P.C.B.
PLUG TYPE: 2.35×0.7
EIAJ RC5320A TYPE1 電圧区分1
(DC 3.15V 2A)



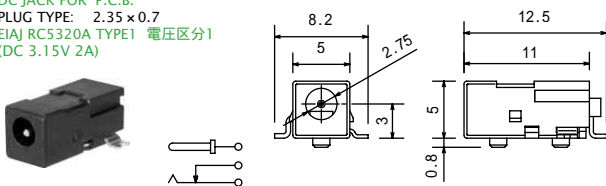
No.M04-451DJ

DC JACK FOR P.C.B.
PLUG TYPE: 2.35×0.7
EIAJ RC5320A TYPE1 電圧区分1
(DC 3.15V 2A)



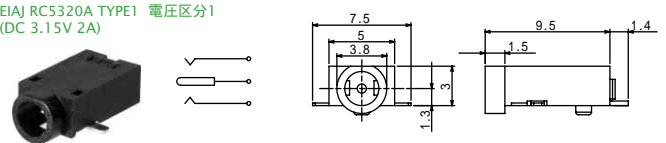
No.M04-450SMT

DC JACK FOR P.C.B.
PLUG TYPE: 2.35×0.7
EIAJ RC5320A TYPE1 電圧区分1
(DC 3.15V 2A)



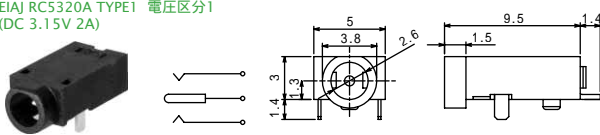
No.M04-640SMT

DC JACK FOR P.C.B.
PLUG TYPE: 2.35×0.7
EIAJ RC5320A TYPE1 電圧区分1
(DC 3.15V 2A)



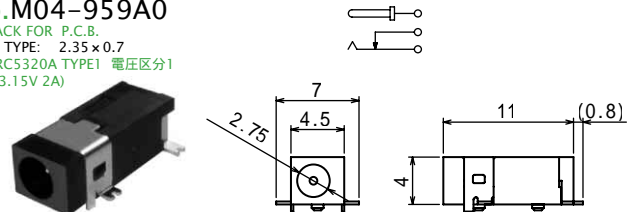
No.M04-640DJ

DC JACK FOR P.C.B.
PLUG TYPE: 2.35×0.7
EIAJ RC5320A TYPE1 電圧区分1
(DC 3.15V 2A)



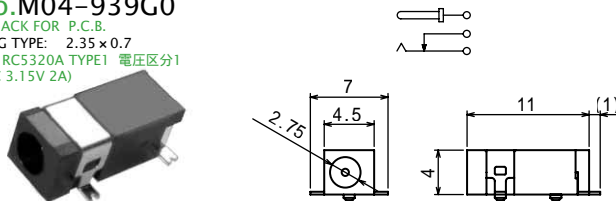
No.M04-959A0

DC JACK FOR P.C.B.
PLUG TYPE: 2.35×0.7
EIAJ RC5320A TYPE1 電圧区分1
(DC 3.15V 2A)



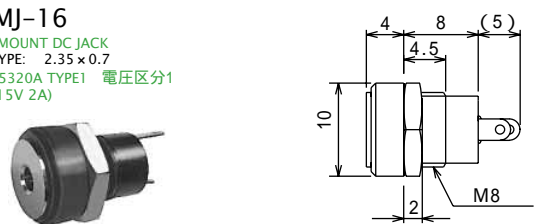
No.M04-939G0

DC JACK FOR P.C.B.
PLUG TYPE: 2.35×0.7
EIAJ RC5320A TYPE1 電圧区分1
(DC 3.15V 2A)



No.MJ-16

PANEL MOUNT DC JACK
PLUG TYPE: 2.35×0.7
EIAJ RC5320A TYPE1 電圧区分1
(DC 3.15V 2A)



No.MJ-095N

DC INLINE JACK
PLUG TYPE: 2.35×0.7
EIAJ RC5320A TYPE1 電圧区分1
(DC 3.15V 2A)

