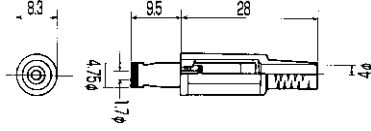


EIAJ RC5320A TYPE3 电压区分3 適合品 RATING 定格: DC10.5V 2A

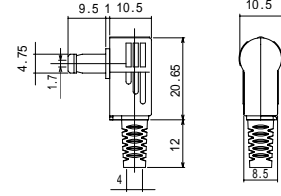
No.MP-203

4.75×1.7 DC PLUG
EIAJ RC5320A TYPE3 电压区分3
(DC 6.3V ~ 10.5V)



No.MP-203LN

4.75×1.7 DC PLUG
EIAJ RC5320A TYPE3 电压区分3
(DC 6.3V ~ 10.5V)



No.MC-5323

DC ADAPTOR CABLE L=1800mm
4.75×1.7 DC PLUG
EIAJ RC5320A TYPE3 电压区分3
(DC 6.3V ~ 10.5V)



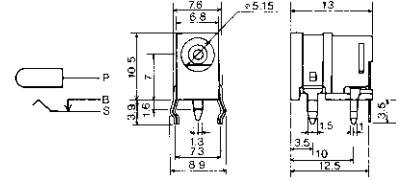
No.MC-5323L

DC ADAPTOR CABLE L=1800mm
4.75×1.7 DC PLUG
EIAJ RC5320A TYPE3 电压区分3
(DC 6.3V ~ 10.5V)



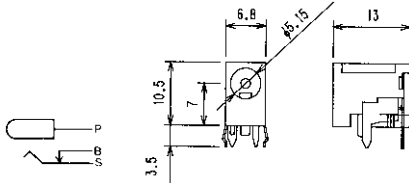
No.M04-440A0

DC JACK FOR P.C.B.
PLUG TYPE: 4.75×1.7
EIAJ RC5320A TYPE3 电压区分3
(DC 6.3V ~ 10.5V 2A)



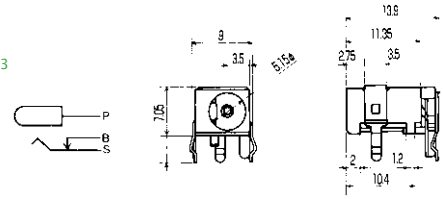
No.M04-754A0

DC JACK FOR P.C.B.
PLUG TYPE: 4.75×1.7
EIAJ RC5320A TYPE3 电压区分3
(DC 6.3V ~ 10.5V 2A)



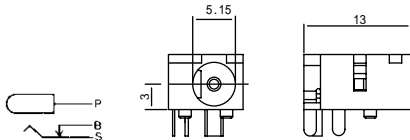
No.M04-533B0

DC JACK FOR P.C.B.
PLUG TYPE: 4.75×1.7
EIAJ RC5320A TYPE3 电压区分3
(DC 6.3V ~ 10.5V 2A)



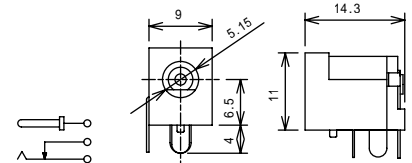
No.M04-430DJ

DC JACK FOR P.C.B.
PLUG TYPE: 4.75×1.7
EIAJ RC5320A TYPE3 电压区分3
(DC 6.3V ~ 10.5V 2A)



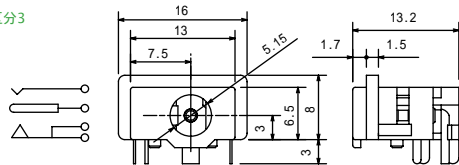
No.M04-241DJ

DC JACK FOR P.C.B.
PLUG TYPE: 4.75×1.7
EIAJ RC5320A TYPE3 电压区分3
(DC 6.3V ~ 10.5V 2A)



No.M04-530DJ

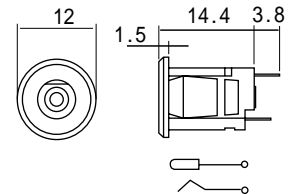
DC JACK FOR P.C.B.
PLUG TYPE: 4.75×1.7
EIAJ RC5320A TYPE3 电压区分3
(DC 6.3V ~ 10.5V 2A)



SNAP-IN MOUNT DC JACK スナップインDCジャック

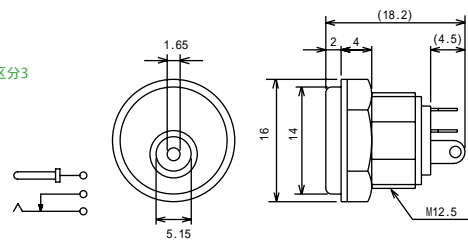
No.MJ-63

PLUG TYPE: 4.75×1.7
EIAJ RC5320A TYPE3 电压区分3
(DC 6.3V ~ 10.5V 2A)



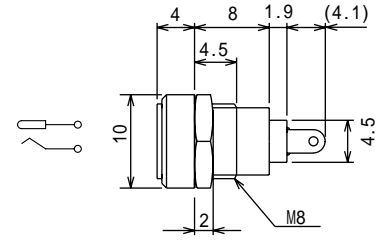
No.MJ-13

PANEL MOUNT DC JACK
PLUG TYPE: 4.75×1.7
EIAJ RC5320A TYPE3 电压区分3
(DC 6.3V ~ 10.5V 2A)



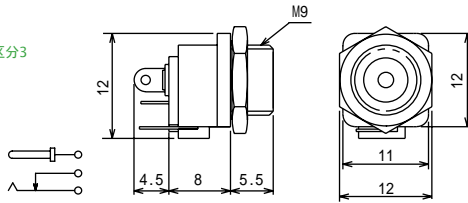
No.MJ-18

PANEL MOUNT DC JACK
PLUG TYPE: 4.75×1.7
EIAJ RC5320A TYPE3 电压区分3
(DC 6.3V ~ 10.5V 2A)



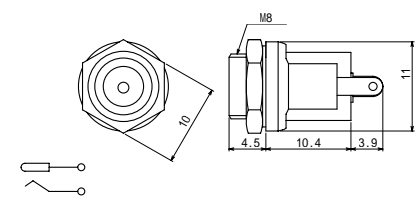
No.MJ-43

PANEL MOUNT DC JACK
PLUG TYPE: 4.75×1.7
EIAJ RC5320A TYPE3 电压区分3
(DC 6.3V ~ 10.5V 2A)



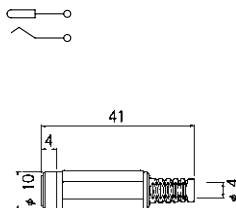
No.MJ-73

PANEL MOUNT DC JACK
PLUG TYPE: 4.75×1.7
EIAJ RC5320A TYPE3 电压区分3
(DC 6.3V ~ 10.5V 2A)



No.MJ-097N

DC INLINE JACK
PLUG TYPE: 4.75×1.7
EIAJ RC5320A TYPE3 电压区分3
(DC 6.3V ~ 10.5V 2A)



No.MC-5328

DC EXTENSION CABLE
PLUG TYPE: 4.75×1.7
EIAJ RC5320A TYPE3 电压区分3
(DC 6.3V ~ 10.5V 2A)



No.MJ-29

DC INLINE JACK FOR MOLDING
PLUG TYPE: 4.75×1.7
EIAJ RC5320A TYPE3 电压区分3
(DC 6.3V ~ 10.5V 2A)

