



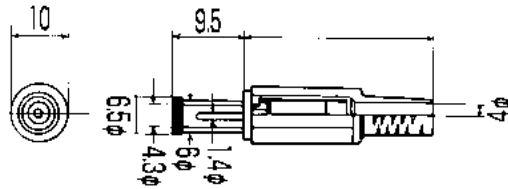
DC PLUGS & JACKS

EIAJ RC5320A TYPE5 电压区分5 適合品

RATING 定格: DC18V 2A

No.MP-205

φ6.5×4.3(center pin : 1.4 φ) DC PLUG
EIAJ RC5320A TYPE5 电压区分5
(DC 13.5V ~18V 2A)



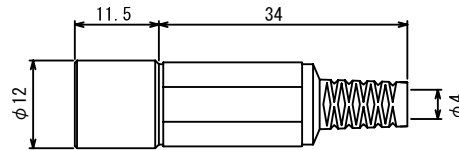
No.MC-5325

DC ADAPTOR CABLE L=1800mm
φ6.5×4.3(center pin : 1.4 φ) DC PLUG
EIAJ RC5320A TYPE5 电压区分5
(DC 13.5V ~18V 2A)



No.MJ-085N

DC INLINE JACK
PLUG TYPE: φ6.5×4.3 (Center pin: φ1.4)
EIAJ RC5320A TYPE5 电压区分5
(DC13.5V~18V 2A)



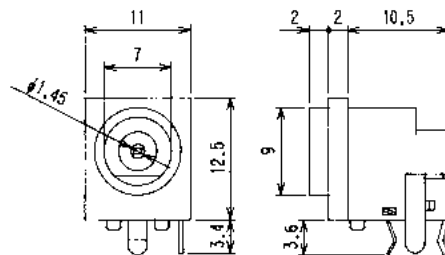
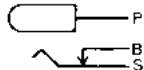
No.MC-5325L

DC ADAPTOR CABLE L=1800mm
φ6.5×4.3(center pin : 1.4 φ) DC PLUG
EIAJ RC5320A TYPE5 电压区分5
(DC 13.5V ~18V 2A)



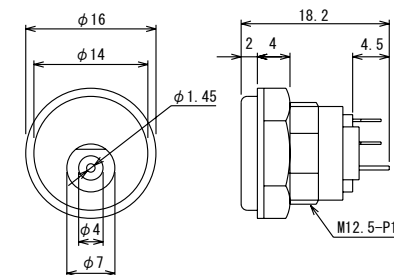
No.M05-532A0

DC JACK FOR P.C.B.
PLUG TYPE: φ6.5×4.3(center pin : 1.4 φ)
EIAJ RC5320A TYPE5 电压区分5
(DC 13.5V~18V 2A)



No.MJ-20

PANEL MOUNT DC JACK
PLUG TYPE: φ6.5×4.3(center pin : 1.4 φ)
EIAJ RC5320A TYPE5 电压区分5
(DC 13.5V~18V 2A)



Marushin electric mfg. co., ltd.