

2023



ADAPTER

TECHNOLOGY

GaN FET Power Supply
Switching Adapter
Medical Power Supply
Military Power Supply
Open Frame Power Supply
Custom-Design



<http://www.adaptertech.com.tw>

ADAPTER TECHNOLOGY

Background :

Adapter Technology Co., Ltd. was founded in 2001 and it has become a promising and growing enterprise with design ability in the Power Supply Manufacturing industry. We dedicate to providing reliable quality, flexible service and upgrading technology to meet customer's request. Our product line covers I.T.E., medical, industrial applications, and chargers. With strong R&D team's support, we can custom design according to each different specification and provide the best solution to customers.

History :

- 2001 Established Adapter Technology Co., Ltd. in Taipei, Taiwan
- 2003 LITEON IT Approved Vender
- 2004 Implement RoHS and Green Products
- 2005 Microsoft Approved Vender
- 2008 Established factory in Dongguan Guang Dong, China
- 2009 Acquired ISO 9001 certification, ISO 14001 certification, and Sony SPP
- 2010 Acquired OHSAS 18001
- 2012 Medical Grade 30W-200W series launched
- 2013 PSU for Pachinko Slot-Machine Industry in Japan
- 2014 Capital Increased to USD 5 Million
- 2015 External Power Adapter Line Meet Level VI Efficiency: 5W-300W
- 2016 I.T.E. External Power Adapter Meet CoC Tier 2 Efficiency: 5W-300W
- 2016 Medical Grade Power Adapter Meet Level VI Efficiency: 6W-300W
- 2017 Acquired ISO 13485 for Medical Device Quality Management System
- 2018 I.T.E. External Power Adapter Acquired IEC/EN/UL 62368-1 Approval
- 2019 GaN Adapter Development 90W-300W
- 2021 GaN Adapter Series Launched/Established New EMI/Surge Chamber
- 2022 New series AC adapter from 90W-450W Acquired IEC/EN/UL 62368-1 3rd edition approval

Products :

1. Switching Power Adapter
2. GaN FET Power Supply
3. Open Frame Switching Power Supply
4. Medical Power Supply
5. Military Power Supply
6. Custom Design





东莞柏洋电子有限公司
BOAYANG ELECTRONICS CO., LTD.


I.T.E. POWER SUPPLY

- 03 5W Series
- 04 12W Series (Wall Mount/Interchangeable/USB connector)
- 06 12W Small Size Series
- 07 18W Series (Wall Mount/Interchangeable/Desktop)
- 09 24W Series (Wall Mount/Interchangeable/Desktop)
- 11 36W Series (Wall Mount/Interchangeable/Desktop)
- 13 40W Series
- 14 50W Series 
- 15 60W Series
- 16 65W Series
- 17 65W Series 
- 18 90W Series
- 19 90W Series 
- 20 120W Series
- 21 120W Series 
- 22 160W Series 
- 23 200W Series 
- 24 240W Series 
- 25 300W Series 

P.D. TYPE-C SERIES POWER SUPPLY

- 26 45W / 65W Series
- 27 60W Series 
- 28 100W Series 

GaN FET POWER SUPPLY

- 29 120W I.T.E. Series
- 30 160W I.T.E. Series
- 31 200W I.T.E. Series
- 32 200W Medical Series
- 33 250W I.T.E. / Medical Series
- 34 300W I.T.E. / Medical Series
- 35 450W I.T.E. / Medical Series 

MEDICAL POWER SUPPLY

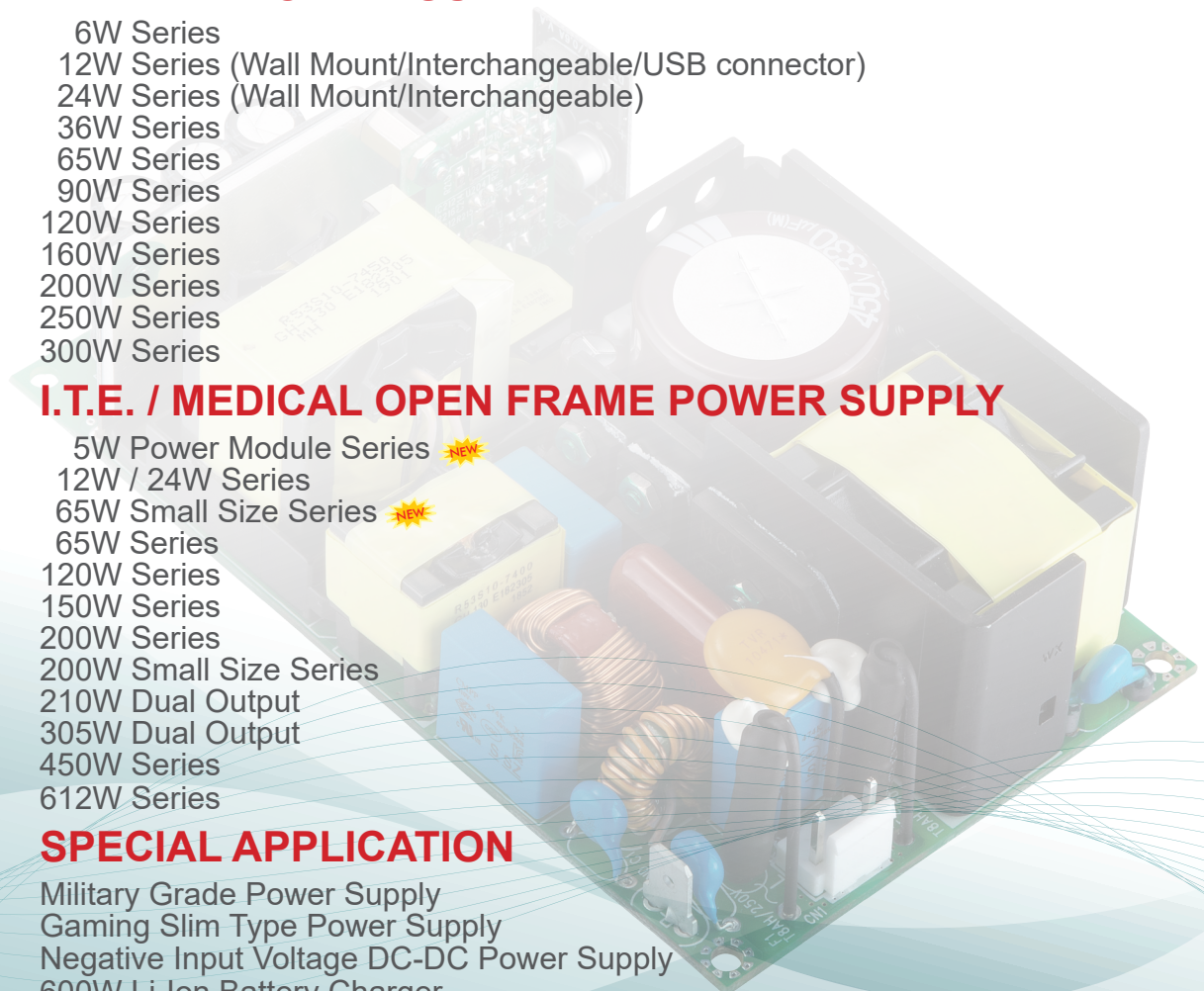
- 36 6W Series
- 37 12W Series (Wall Mount/Interchangeable/USB connector)
- 38 24W Series (Wall Mount/Interchangeable)
- 39 36W Series
- 40 65W Series
- 41 90W Series
- 42 120W Series
- 43 160W Series
- 44 200W Series
- 45 250W Series
- 46 300W Series

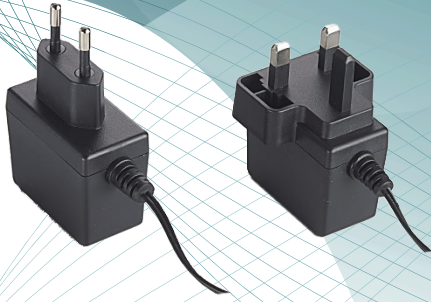
I.T.E. / MEDICAL OPEN FRAME POWER SUPPLY

- 47 5W Power Module Series 
- 48 12W / 24W Series
- 49 65W Small Size Series 
- 50 65W Series
- 51 120W Series
- 52 150W Series
- 53 200W Series
- 54 200W Small Size Series
- 55 210W Dual Output
- 56 305W Dual Output
- 57 450W Series
- 58 612W Series

SPECIAL APPLICATION

- 59 Military Grade Power Supply
- 60 Gaming Slim Type Power Supply
- 61 Negative Input Voltage DC-DC Power Supply
- 600W Li-Ion Battery Charger





5 Watt Series

Wall Mount Type
USA / Japan / Taiwan / Europe / UK

ATS005T - W X X X □

O / P Voltage ←

→ U : US Plug
E : EU Plug
B : UK Plug

Features :

- IEC/EN/UL 62368-1
- 100-240VAC Universal Input
- Regulated Output With Low Ripple Noise
- Safety Agency Requirements and EMI/EMS Certified
- Modified and Custom Design Available
- 1 Year Warranty

Model	O/P Voltage	O/P Current	Watt
ATS005T-W033□	3.3V	1.50A	4.95W
ATS005T-W050□	5.0V	1.00A	5.00W
ATS005T-W051□	5.0V	1.50A	7.50W
ATS005T-W060□	5.9V	1.20A	7.08W
ATS005T-W075□	7.5V	1.00A	7.50W
ATS005T-W090□	9.0V	0.67A	6.03W
ATS005T-W120□	12.0V	0.60A	7.20W
ATS005T-W150□	15.0V	0.50A	7.50W
ATS005T-W180□	18.0V	0.33A	5.94W
ATS005T-W240□	24.0V	0.25A	6.00W

Input

Voltage	100-240VAC
Line Frequency	50-60Hz
Current	0.19A Max.
Protection	Internal Primary Current Fuse
Configuration	U for US Plug
	E for EU Plug
	B for UK Plug

Output

Load Regulation	±5% (Typical)
Ripple & Noise	2% Vp-p Max. for Output Voltage@ Full Load
Transient Response	0.5mS for 50% Load Change Typical
Hold-up Time	10mS @ Full Load
Protection	Short Circuit Protection / Over Voltage Protection / Over Current Protection

Electrical

Topology	Switching Flyback
Dielectric Withstand	3000VAC Primary - Secondary
Leakage Current	0.25mA
Efficiency	DoE Level VI, ErP Stage 2
EMC Standards	EN55032
	EN61000-3-2,3
	EN55035
MTBF	300,000 Calculated Hours at 25°C, by Telcordia SR-332

Environmental

Operating Temperature	-20 to + 40°C
Storage Temperature	-20 to + 80°C
Relative Humidity	Operating : 20 to 80% RH
	Storage : 10 to 90% RH
Cooling	Natural Convection Cooling

Mechanical

Case Dimension	U - L 56 × W 28 × H 59 (mm)
	E - L 56 × W 28 × H 79 (mm)
	B - L 56 × W 49 × H 71 (mm)
Weight	U : 82g E : 96g
	B : 100g (Ref.)





12 Watt Series

Wall Mount Type
USA / Japan / Taiwan / Europe / UK

ATS012T - W X X X □

O / P Voltage ←

→ U : US Plug
E : EU Plug
B : UK Plug

Features :

- IEC/EN/UL 62368-1
- 100-240VAC Universal Input
- Regulated Output With Low Ripple Noise
- Safety Agency Requirements and EMI/EMS Certified
- Modified and Custom Design Available
- 1 Year Warranty

Model	O/P Voltage	O/P Current	Watt
ATS012T-W033□	3.3V	2.00A	6.60W
ATS012T-W050□	5.0V	2.00A	10.00W
ATS012T-W051□	5.0V	2.50A	12.50W
ATS012T-W060□	5.9V	2.00A	11.80W
ATS012T-W084□	8.4V	1.30A	10.92W
ATS012T-W090□	9.0V	1.20A	10.80W
ATS012T-W120□	12.0V	1.00A	12.00W
ATS012T-W135□	13.5V	0.89A	12.00W
ATS012T-W150□	15.0V	0.80A	12.00W
ATS012T-W180□	18.0V	0.67A	12.00W
ATS012T-W240□	24.0V	0.50A	12.00W

Input

Voltage	100-240VAC
Line Frequency	50-60Hz
Current	0.31A Max.
Protection	Internal Primary Current Fuse
Configuration	U for US Plug
	E for EU Plug
	B for UK Plug

Output

Load Regulation	±5% (Typical)
Ripple & Noise	2% Vp-p Max. for Output Voltage@ Full Load
Transient Response	0.5mS for 50% Load Change Typical
Hold-up Time	10mS @ Full Load
Protection	Short Circuit Protection / Over Voltage Protection / Over Current Protection

Electrical

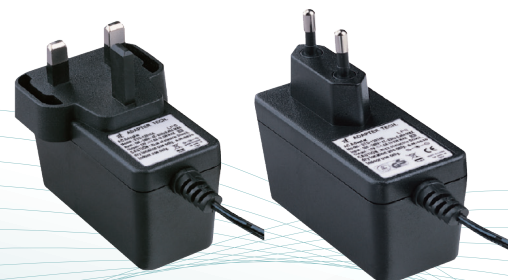
Topology	Switching Flyback
Dielectric Withstand	3000VAC Primary - Secondary
Leakage Current	0.25mA
Efficiency	DoE Level VI, ErP Stage 2, CoC Tier 2
EMC Standards	EN55032
	EN61000-3-2,3
	EN55035
MTBF	300,000 Calculated Hours at 25°C , by Telcordia SR-332

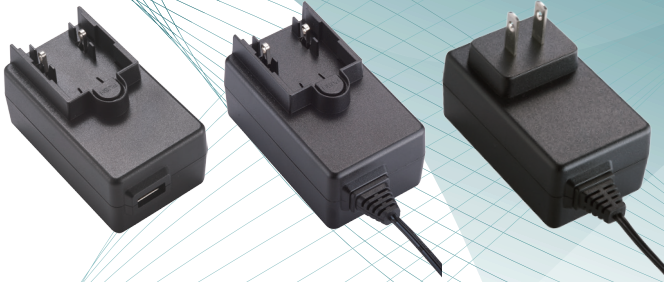
Environmental

Operating Temperature	-20 to + 40°C
Storage Temperature	-20 to + 80°C
Relative Humidity	Operating : 20 to 80% RH
	Storage : 10 to 90% RH
Cooling	Natural Convection Cooling

Mechanical

Case Dimension	U - L 72 × W 34 × H 59 (mm)
	E - L 72 × W 34 × H 80 (mm)
	B - L 72 × W 50 × H 71 (mm)
Weight	U : 126g B : 130g
	E : 128g (Ref.)





12 Watt Series

Wall Mount Type
USA / Europe / UK / Australia /
China / AC Plug Changeable

ATM012T - W X X X □ □

O / P Voltage

U : US Plug

E : EU Plug

B : UK Plug

A : AU Plug

C : CN Plug

V : Changeable Plug

Blank : with DC cord
U : with USB port

Features :

- IEC/EN/UL 62368-1
- 100-240VAC Universal Input
- Regulated Output With Low Ripple Noise
- Safety Agency Requirements and EMI/EMS Certified
- Modified and Custom Design Available
- 1 Year Warranty

Model	O/P Voltage	O/P Current	Watt
ATM012T-W033□	3.3V	2.00A	6.60W
ATM012T-W050□□	5.0V	2.00A	10.00W
ATM012T-W051□	5.0V	3.00A	15.00W
ATM012T-W060□	5.9V	2.00A	11.80W
ATM012T-W062□	6.2V	2.00A	12.40W
ATM012T-W090□	9.0V	1.20A	10.80W
ATM012T-W120□	12.0V	1.00A	12.00W
ATM012T-W150□	15.0V	0.80A	12.00W
ATM012T-W180□	18.0V	0.67A	12.06W
ATM012T-W240□	24.0V	0.50A	12.00W

Input	
Voltage	100-240VAC
Line Frequency	50-60Hz
Current	0.32A Max.
Protection	Internal Primary Current Fuse
Configuration	U for US Plug
	E for EU Plug
	B for UK Plug
	A for AU Plug
	C for CN Plug
	V for Changeable Plug

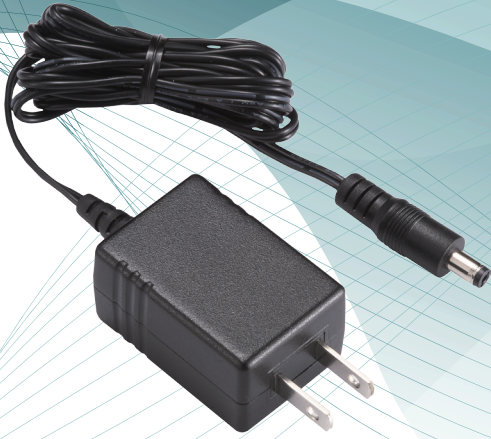
Output	
Load Regulation	±5% (Typical)
Ripple & Noise	2% Vp-p Max. for Output Voltage@ Full Load
Transient Response	0.5mS for 50% Load Change Typical
Hold-up Time	10mS @ Full Load
Protection	Short Circuit Protection / Over Voltage Protection / Over Current Protection

Electrical	
Topology	Switching Flyback
Dielectric Withstand	3000VAC Primary - Secondary
Leakage Current	0.25mA
Efficiency	DoE Level VI, ErP Stage 2, CoC Tier 2
EMC Standards	EN55032
	EN61000-3-2,3
	EN55035
MTBF	300,000 Calculated Hours at 25°C , by Telcordia SR-332

Environmental	
Operating Temperature	-20 to + 40°C
Storage Temperature	-20 to + 80°C
Relative Humidity	Operating : 20 to 80% RH
	Storage : 10 to 90% RH
Cooling	Natural Convection Cooling

Mechanical	
Case Dimension	U - L 80.2 × W 46 × H 57.5(mm)
	E - L 80.2 × W 46 × H 68.7(mm)
	B - L 80.2 × W 49.6 × H 62.7(mm)
	A - L 80.2 × W 56 × H 57.5(mm)
	C - L 80.2 × W 46 × H 57.5(mm)
	V - L 80.2 × W 46 × H 40.5(mm)
Weight	U : 140g E : 145g B : 148g
	A : 144g C : 140g V : 140g(Ref.)





12 Watt Series

Small Size Wall Mount Type
USA / Japan / Taiwan

ATS012S - W X X X U

O / P Voltage ← U : US Plug

Features :

- IEC/UL 62368-1
- 100-240VAC Universal Input
- Safety Agency Requirements and EMI/EMS Certified
- Modified and Custom Design Available
- 1 Year Warranty

Model	O/P Voltage	O/P Current	Watt
ATS012S-W033U	3.3V	2.0A	6.6W
ATS012S-W050U	5.0V	2.0A	10.0W
ATS012S-W060U	5.9V	2.0A	11.8W
ATS012S-W090U	9.0V	1.2A	10.8W
ATS012S-W120U	12.0V	1.0A	12.0W
ATS012S-W150U	15.0V	0.8A	12.0W
ATS012S-W240U	24.0V	0.5A	12.0W

Input

Voltage	100-240VAC
Line Frequency	50-60Hz
Current	0.31A Max.
Protection	Internal Primary Resistor Fuse
Configuration	U for US Plug

Output

Load Regulation	±5% (Typical)
Ripple & Noise	3% Vp-p Max. for Output Voltage@ Full Load
Transient Response	0.5mS for 50% Load Change Typical
Hold-up Time	5mS @ Full Load
Protection	Short Circuit Protection / Over Voltage Protection / Over Current Protection

Electrical

Topology	Switching Flyback
Dielectric Withstand	3000VAC Primary - Secondary
Leakage Current	0.25mA
Efficiency	DoE Level VI
EMC Standards	FCC CFR 47, Part 15 Subpart B
	ANSI C63.4 : 2014
	Canadian ICES-003 issue 7 (2020) Class B
MTBF	300,000 Calculated Hours at 25°C , by Telcordia SR-332

Environmental

Operating Temperature	-20 to + 40°C
Storage Temperature	-20 to + 80°C
Relative Humidity	Operating : 20 to 80% RH
	Storage : 10 to 90% RH
Cooling	Natural Convection Cooling

Mechanical

Case Dimension	L 65.4 × W 33.8 × H 25.4 (mm)
Weight	66g (Ref.)

18 Watt Series

Wall Mount Type

USA / Japan / Taiwan / Europe / UK / Australia /
China / AC Plug Changeable

ATS018T - W X X X □

O / P Voltage ←

→ U : US Plug

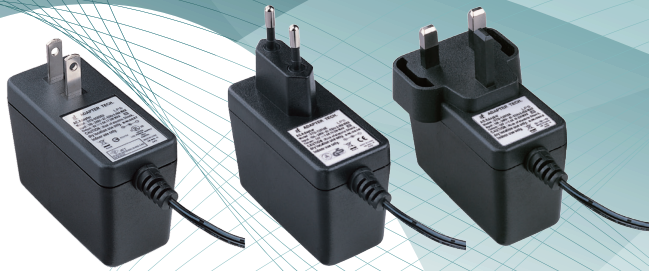
E : EU Plug

B : UK Plug

A : AU Plug

C : CN Plug

V : Changeable Plug



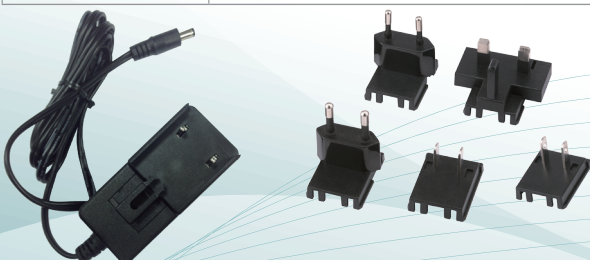
Features :

- IEC/EN/UL 62368-1
- 100-240VAC Universal Input
- Regulated Output With Low Ripple Noise
- Safety Agency Requirements and EMI/EMS Certified
- Modified and Custom Design Available
- 1 Year Warranty

Model	O/P Voltage	O/P Current	Watt
ATS018T-W050□	5.0V	3.0A	15.00W
ATS018T-W060□	5.9V	2.5A	14.75W
ATS018T-W061□	5.9V	3.0A	17.70W
ATS018T-W070□	7.0V	2.5A	17.50W
ATS018T-W075□	7.5V	2.5A	18.75W
ATS018T-W090□	9.0V	2.2A	19.80W
ATS018T-W100□	10.0V	1.9A	19.00W
ATS018T-W110□	11.0V	1.6A	17.60W
ATS018T-W120□	12.0V	1.6A	19.20W
ATS018T-W150□	15.0V	1.3A	19.50W
ATS018T-W160□	16.0V	1.2A	19.20W
ATS018T-W180□	18.0V	1.1A	19.80W
ATS018T-W240□	24.0V	0.8A	19.20W

Input

Voltage	100-240VAC	
Line Frequency	50-60Hz	
Current	0.48A Max.	
Protection	Internal Primary Current Fuse	
Configuration	U for US Plug	A for AU Plug
	E for EU Plug	C for CN Plug
	B for UK Plug	
	V for Changeable Plug	



Output

Load Regulation	±5% (Typical)
Ripple & Noise	2% Vp-p Max. for Output Voltage@ Full Load
Transient Response	0.5mS for 50% Load Change Typical
Hold-up Time	10mS @ Full Load
Protection	Short Circuit Protection / Over Voltage Protection / Over Current Protection

Electrical

Topology	Switching Flyback
Dielectric Withstand	3000VAC Primary - Secondary
Leakage Current	0.25mA
Efficiency	DoE Level VI, ErP Stage 2, CoC Tier 2
EMC Standards	EN55032
	EN61000-3-2,3
	EN55035
MTBF	300,000 Calculated Hours at 25°C , by Telcordia SR-332

Environmental

Operating Temperature	-20 to + 40°C
Storage Temperature	-20 to + 80°C
Relative Humidity	Operating : 20 to 80% RH
	Storage : 10 to 90% RH
Cooling	Natural Convection Cooling

Mechanical

Case Dimension	U & C - L 72 x W 34 x H 69 (mm)
	E - L 72 x W 34 x H 90 (mm)
	B - L 72 x W 50 x H 81 (mm)
	A - L 72 x W 40 x H 78 (mm)
	V - L 75 x W 36 x H 66 (mm)
Weight	U : 148g A : 150g
	E : 154g C : 148g
	B : 158g V : 158g (Ref.)

18 Watt - Series

Desktop Type



ATS018T - □ X X X

P : C6 / C14 ← O / P Voltage
A : C8

Features :

- IEC/EN/UL 62368-1
- 100-240VAC Universal Input
- Regulated Output With Low Ripple Noise
- Safety Agency Requirements and EMI/EMS Certified
- Modified and Custom Design Available
- 1 Year Warranty

Model	O/P Voltage	O/P Current	Watt
ATS018T-□050	5.0V	3.0A	15.00W
ATS018T-□060	5.9V	2.5A	14.75W
ATS018T-□061	5.9V	3.0A	17.70W
ATS018T-□070	7.0V	2.5A	17.50W
ATS018T-□075	7.5V	2.5A	18.75W
ATS018T-□090	9.0V	2.2A	19.80W
ATS018T-□100	10.0V	1.9A	19.00W
ATS018T-□110	11.0V	1.6A	17.60W
ATS018T-□120	12.0V	1.6A	19.20W
ATS018T-□150	15.0V	1.3A	19.50W
ATS018T-□160	16.0V	1.2A	19.20W
ATS018T-□180	18.0V	1.1A	19.80W
ATS018T-□240	24.0V	0.8A	19.20W

Input

Voltage	100-240VAC
Line Frequency	50-60Hz
Current	0.48A Max.
Protection	Internal Primary Current Fuse
Configuration	IEC60320/C6,C8,C14

Output

Load Regulation	±5% (Typical)
Ripple & Noise	2% Vp-p Max. for Output Voltage@ Full Load
Transient Response	0.5mS for 50% Load Change Typical
Hold-up Time	10mS @ Full Load
Protection	Short Circuit Protection / Over Voltage Protection / Over Current Protection

Electrical

Topology	Switching Flyback
Dielectric Withstand	3000VAC Primary - Secondary
Leakage Current	0.25mA @ 2Pin / 3.5mA @ 3Pin
Efficiency	DoE Level VI, ErP Stage 2, CoC Tier 2
EMC Standards	EN55032
	EN61000-3-2,3
	EN55035
MTBF	300,000 Calculated Hours at 25°C, by Telcordia SR-332

Environmental

Operating Temperature	-20 to + 40°C
Storage Temperature	-20 to + 80°C
Relative Humidity	Operating : 20 to 80% RH
	Storage : 10 to 90% RH
Cooling	Natural Convection Cooling

Mechanical

Case Dimension	C6 & C14 : L100 x W50 x H33(mm)
	C8 : L88 x W50 x H34(mm)
Weight	144g (Ref.)

24 Watt Series

Wall Mount Type
USA / Japan / Taiwan / Europe / UK / Australia /
China / AC Plug Changeable

ATS024T - W X X X □

O / P Voltage ←

U : US Plug
E : EU Plug
B : UK Plug
A : AU Plug
C : CN Plug
V : Changeable Plug

Features :

- IEC/EN/UL 62368-1
- 100-240VAC Universal Input
- Regulated Output With Low Ripple Noise
- Safety Agency Requirements and EMI/EMS Certified
- Modified and Custom Design Available
- 1 Year Warranty

Model	O/P Voltage	O/P Current	Watt
ATS024T-W050□	5.0V	4.0A	20.00W
ATS024T-W060□	5.9V	3.5A	20.65W
ATS024T-W061□	5.9V	4.0A	23.60W
ATS024T-W070□	7.0V	3.0A	21.00W
ATS024T-W075□	7.5V	3.0A	22.50W
ATS024T-W090□	9.0V	2.5A	22.50W
ATS024T-W120□	12.0V	2.0A	24.00W
ATS024T-W150□	15.0V	1.6A	24.00W
ATS024T-W240□	24.0V	1.0A	24.00W
ATS024T-W480□	48.0V	0.5A	24.00W

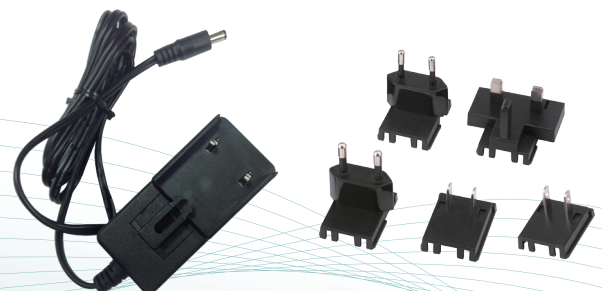
Input		
Voltage	100-240VAC	
Line Frequency	50-60Hz	
Current	0.58A Max.	
Protection	Internal Primary Current Fuse	
Configuration	U for US Plug	A for AU Plug
	E for EU Plug	C for CN Plug
	B for UK Plug	
	V for Changeable Plug	

Output	
Load Regulation	±5% (Typical)
Ripple & Noise	2% Vp-p Max. for Output Voltage@ Full Load
Transient Response	0.5mS for 50% Load Change Typical
Hold-up Time	10mS @ Full Load
Protection	Short Circuit Protection / Over Voltage Protection / Over Current Protection

Electrical	
Topology	Switching Flyback
Dielectric Withstand	3000VAC Primary - Secondary
Leakage Current	0.25mA
Efficiency	DoE Level VI, ErP Stage 2, CoC Tier 2
EMC Standards	EN55032
	EN61000-3-2,3
	EN55035
MTBF	300,000 Calculated Hours at 25°C , by Telcordia SR-332

Environmental	
Operating Temperature	-20 to + 40°C
Storage Temperature	-20 to + 80°C
Relative Humidity	Operating : 20 to 80% RH
	Storage : 10 to 90% RH
Cooling	Natural Convection Cooling

Mechanical	
Case Dimension	U & C - L 72 x W 34 x H 69 (mm)
	E - L 72 x W 34 x H 90 (mm)
	B - L 72 x W 50 x H 81 (mm)
	A - L 72 x W 40 x H 78 (mm)
	V - L 75 x W 36 x H 66 (mm)
Weight	U : 148g A : 150g
	E : 154g C : 148g
	B : 158g V : 158g (Ref.)





24 Watt Series

Desktop Type

ATS024T - □ X X X

P : C6 / C14 ← O / P Voltage
A : C8 →



Features :

- IEC/EN/UL 62368-1
- 100-240VAC Universal Input
- Regulated Output With Low Ripple Noise
- Safety Agency Requirements and EMI/EMS Certified
- Modified and Custom Design Available
- 1 Year Warranty

Model	O/P Voltage	O/P Current	Watt
ATS024T-□050	5.0V	4.0A	20.00W
ATS024T-□060	5.9V	3.5A	20.65W
ATS024T-□061	5.9V	4.0A	23.60W
ATS024T-□070	7.0V	3.0A	21.00W
ATS024T-□075	7.5V	3.0A	22.50W
ATS024T-□090	9.0V	2.5A	22.50W
ATS024T-□120	12.0V	2.0A	24.00W
ATS024T-□150	15.0V	1.6A	24.00W
ATS024T-□240	24.0V	1.0A	24.00W
ATS024T-□480	48.0V	0.5A	24.00W

Input

Voltage	100-240VAC
Line Frequency	50-60Hz
Current	0.58A Max.
Protection	Internal Primary Current Fuse
Configuration	IEC60320/C6,C8,C14

Output

Load Regulation	±5% (Typical)
Ripple & Noise	2% Vp-p Max. for Output Voltage@ Full Load
Transient Response	0.5mS for 50% Load Change Typical
Hold-up Time	10mS @ Full Load
Protection	Short Circuit Protection / Over Voltage Protection / Over Current Protection

Electrical

Topology	Switching Flyback
Dielectric Withstand	3000VAC Primary - Secondary
Leakage Current	0.25mA @ 2Pin / 3.5mA @ 3Pin
Efficiency	DoE Level VI, ErP Stage 2, CoC Tier 2
EMC Standards	EN55032
	EN61000-3-2,3
	EN55035
MTBF	300,000 Calculated Hours at 25°C , by Telcordia SR-332

Environmental

Operating Temperature	-20 to + 40°C
Storage Temperature	-20 to + 80°C
Relative Humidity	Operating : 20 to 80% RH
	Storage : 10 to 90% RH
Cooling	Natural Convection Cooling

Mechanical

Case Dimension	C6 & C14 : L100 x W50 x H33(mm)
	C8 : L88 x W50 x H34(mm)
Weight	166g (Ref.)



36 Watt Series

Wall Mount Type

USA / Japan / Taiwan / Europe / UK / Australia / China

AC Plug Changeable

ATS036T - W X X X □

O / P Voltage ←

→ U : US Plug

E : EU Plug

B : UK Plug

A : AU Plug

C : CN Plug

V : Changeable Plug

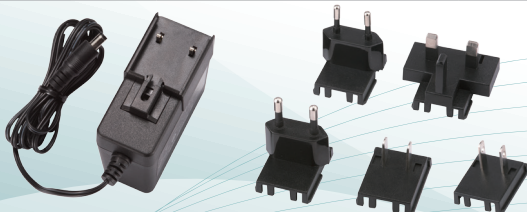
Features :

- IEC/EN/UL 62368-1
- 100-240VAC Universal Input
- Regulated Output With Low Ripple Noise
- Safety Agency Requirements and EMI/EMS Certified
- Modified and Custom Design Available
- 1 Year Warranty

Model	O/P Voltage	O/P Current	Watt
ATS036T-W050□	5.0V	5.00A	25W
ATS036T-W075□	7.5V	4.00A	30W
ATS036T-W085□	8.5V	3.52A	30W
ATS036T-W090□	9.0V	3.34A	30W
ATS036T-W120□	12.0V	3.00A	36W
ATS036T-W121□	12.0V	2.50A	30W
ATS036T-W135□	13.5V	2.66A	36W
ATS036T-W150□	15.0V	2.40A	36W
ATS036T-W160□	16.0V	2.25A	36W
ATS036T-W180□	18.0V	2.00A	36W
ATS036T-W240□	24.0V	1.50A	36W
ATS036T-W480□	48.0V	0.75A	36W

Input

Voltage	100-240VAC	
Line Frequency	50-60Hz	
Current	1A Max.	
Protection	Internal Primary Current Fuse	
Configuration	U for US Plug	B for UK Plug
	E for EU Plug	A for AU Plug
	C for CN Plug	
	V for Changeable Plug	



Output

Load Regulation	±5% (Typical)
Ripple & Noise	2% Vp-p Max. for Output Voltage@ Full Load
Transient Response	0.5mS for 50% Load Change Typical
Hold-up Time	10mS @ Full Load
Protection	Short Circuit Protection / Over Voltage Protection / Over Current Protection

Electrical

Topology	Switching Flyback
Dielectric Withstand	3000VAC Primary - Secondary
Leakage Current	0.25mA
Efficiency	DoE Level VI, ErP Stage 2, CoC Tier 2
EMC Standards	EN55032
	EN61000-3-2,3
	EN55035
MTBF	300,000 Calculated Hours at 25°C, by Telcordia SR-332

Environmental

Operating Temperature	-20 to + 40°C
Storage Temperature	-20 to + 80°C
Relative Humidity	Operating : 20 to 80% RH
	Storage : 10 to 90% RH
Cooling	Natural Convection Cooling

Mechanical

Case Dimension	U - L 79 x W 34 x H 74 (mm)
	E - L 79 x W 34 x H 94 (mm)
	B - L 79 x W 49 x H 86 (mm)
	A - L 79 x W 41 x H 82 (mm)
	V - L 79 x W 35 x H 66 (mm)
Weight	160g (Ref.)



36 Watt Series

Desktop Type

ATS036T - □ X X X

P : C14 ← O / P Voltage
A : C8

Features :

- IEC/EN/UL 62368-1
- 100-240VAC Universal Input
- Regulated Output With Low Ripple Noise
- Safety Agency Requirements and EMI/EMS Certified
- Modified and Custom Design Available
- 1 Year Warranty

Model	O/P Voltage	O/P Current	Watt
ATS036T-□050	5.0V	5.00A	25W
ATS036T-□075	7.5V	4.00A	30W
ATS036T-□085	8.5V	3.52A	30W
ATS036T-□090	9.0V	3.34A	30W
ATS036T-□120	12.0V	3.00A	36W
ATS036T-□121	12.0V	2.50A	30W
ATS036T-□135	13.5V	2.66A	36W
ATS036T-□150	15.0V	2.40A	36W
ATS036T-□160	16.0V	2.25A	36W
ATS036T-□180	18.0V	2.00A	36W
ATS036T-□240	24.0V	1.50A	36W
ATS036T-□480	48.0V	0.75A	36W

Input

Voltage	100-240VAC
Line Frequency	50-60Hz
Current	1A Max.
Protection	Internal Primary Current Fuse
Configuration	IEC60320/C8,C14

Output

Load Regulation	±5% (Typical)
Ripple & Noise	2% Vp-p Max. for Output Voltage@ Full Load
Transient Response	0.5mS for 50% Load Change Typical
Hold-up Time	10mS @ Full Load
Protection	Short Circuit Protection / Over Voltage Protection / Over Current Protection

Electrical

Topology	Switching Flyback
Dielectric Withstand	3000VAC Primary - Secondary
Leakage Current	0.25mA @ 2Pin / 3.5mA @ 3Pin
Efficiency	DoE Level VI, ErP Stage 2, CoC Tier 2
EMC Standards	EN55032
	EN61000-3-2,3
	EN55035
MTBF	300,000 Calculated Hours at 25°C , by Telcordia SR-332

Environmental

Operating Temperature	-20 to + 40°C
Storage Temperature	-20 to + 80°C
Relative Humidity	Operating : 20 to 80% RH
	Storage : 10 to 90% RH
Cooling	Natural Convection Cooling

Mechanical

Case Dimension	C14 - L 100 x W 50 x H 33 (mm)
	C8 - L 99 x W 50 x H 33 (mm)
Weight	210g (Ref.)



40 Watt Series

Desktop Type

ATS040T - □ X X X

P : C6 / C14 ← O / P Voltage
A : C8



Features :

- IEC/EN/UL 62368-1
- 100-240VAC Universal Input
- Regulated Output With Low Ripple Noise
- Safety Agency Requirements and EMI/EMS Certified
- Modified and Custom Design Available
- 1 Year Warranty

Model	O/P Voltage	O/P Current	Watt
ATS040T-□120	12.0V	3.30A	40W
ATS040T-□150	15.0V	2.67A	40W
ATS040T-□190	19.0V	2.10A	40W
ATS040T-□200	20.0V	2.00A	40W
ATS040T-□240	24.0V	1.67A	40W
ATS048T-A480	48.0V	1.00A	48W

Input

Voltage	100-240VAC
Line Frequency	50-60Hz
Current	1A Max. / 1.2A Max. for ATS048T-A480
Protection	Internal Primary Current Fuse
Configuration	IEC60320/C6,C8,C14

Output

Load Regulation	±5% (Typical)
Ripple & Noise	1% Vp-p Max. for Output Voltage@ Full Load
Transient Response	0.5mS for 50% Load Change Typical
Hold-up Time	10mS @ Full Load
Protection	Short Circuit Protection / Over Voltage Protection / Over Current Protection

Electrical

Topology	Switching Flyback
Dielectric Withstand	3000VAC Primary - Secondary
Leakage Current	0.25mA @ 2Pin / 3.5mA @ 3Pin
Efficiency	DoE Level VI, ErP Stage 2, CoC Tier 2
EMC Standards	EN55032
	EN61000-3-2,3
	EN55035
MTBF	300,000 Calculated Hours at 25°C , by Telcordia SR-332

Environmental

Operating Temperature	-20 to + 40°C
Storage Temperature	-20 to + 80°C
Relative Humidity	Operating : 20 to 80% RH
	Storage : 10 to 90% RH
Cooling	Natural Convection Cooling

Mechanical

Case Dimension	L 100 x W 50 x H 33 (mm)
Weight	200g (Ref.)

NEW

I.T.E.



50 Watt Series

Desktop Type

ATS050A1 - □ X X X

A : C8 ← → O / P Voltage
 G : C6
 P : C14



Features :

- IEC/EN/UL 62368-1 3rd Edition
- 100-240VAC Universal Input
- Regulated Output With Low Ripple Noise
- Safety Agency Requirements and EMI/EMS Certified
- Modified and Custom Design Available
- 1 Year Warranty

Model	O/P Voltage	O/P Current	Watt
ATS050A1-□090	9.0V	5.00A	45W
ATS050A1-□120	12.0V	4.20A	50W
ATS050A1-□150	15.0V	3.34A	50W
ATS050A1-□180	18.0V	2.78A	50W
ATS050A1-□190	19.0V	2.64A	50W
ATS050A1-□240	24.0V	2.10A	50W
ATS050A1-□480	48.0V	1.05A	50W

Input	
Voltage	100-240VAC
Line Frequency	50-60Hz
Current	1.2A Max.
Protection	Internal Primary Current Fuse
Configuration	IEC60320/C6,C8,C14

Output	
Load Regulation	±5% (Typical)
Ripple & Noise	2% Vp-p Max. for Output Voltage@ Full Load
Transient Response	0.5mS for 50% Load Change Typical
Hold-up Time	10mS @ Full Load
Protection	Short Circuit Protection / Over Voltage Protection / Over Current Protection

Electrical	
Topology	Switching Flyback
Dielectric Withstand	3000VAC Primary - Secondary
Leakage Current	0.25mA @ 2Pin / 3.5mA @ 3Pin
Efficiency	DoE Level VI, ErP Stage 2
EMC Standards	EN55032
	EN61000-3-2,3
	EN55035
MTBF	300,000 Calculated Hours at 25°C , by Telcordia SR-332

Environmental	
Operating Temperature	-20 to + 40°C
Storage Temperature	-20 to + 80°C
Relative Humidity	Operating : 20 to 80% RH
	Storage : 10 to 90% RH
Cooling	Natural Convection Cooling

Mechanical	
Case Dimension	L115 x W48.5 x H31.6 (mm)
Weight	210g (Ref.)



R33154
RoHS

RoHS



60 Watt Series

Wall Mount Type
USA / Japan / Taiwan / Europe

ATS060T - W X X X □

O / P Voltage ← → U : US Plug
E : EU Plug

Features :

- IEC/EN/UL 62368-1
- 100-240VAC Universal Input
- Regulated Output With Low Ripple Noise
- Safety Agency Requirements and EMI/EMS Certified
- Modified and Custom Design Available
- 1 Year Warranty

Model	O/P Voltage	O/P Current	Watt
ATS060T-W120□	12.0V	5.00A	60W
ATS060T-W150□	15.0V	4.00A	60W
ATS060T-W180□	18.0V	3.33A	60W
ATS060T-W190□	19.0V	3.15A	60W
ATS060T-W240□	24.0V	2.50A	60W
ATS060T-W300□	30.0V	2.00A	60W
ATS060T-W480□	48.0V	1.25A	60W

Input

Voltage	100-240VAC
Line Frequency	50-60Hz
Current	1.5A Max.
Protection	Internal Primary Current Fuse
Configuration	U for US Plug
	E for EU Plug

Output

Load Regulation	±5% (Typical)
Ripple & Noise	1% Vp-p Max. for Output Voltage@ Full Load
Transient Response	0.5mS for 50% Load Change Typical
Hold-up Time	10mS @ Full Load
Protection	Short Circuit Protection / Over Voltage Protection / Over Current Protection

Electrical

Topology	Switching Flyback
Dielectric Withstand	3000VAC Primary - Secondary
Leakage Current	0.25mA
Efficiency	DoE Level VI, ErP Stage 2, CoC Tier 2
EMC Standards	EN55032
	EN61000-3-2,3
	EN55035
MTBF	300,000 Calculated Hours at 25°C, by Telcordia SR-332

Environmental

Operating Temperature	-20 to + 40°C
Storage Temperature	-20 to + 80°C
Relative Humidity	Operating : 20 to 80% RH
	Storage : 10 to 90% RH
Cooling	Natural Convection Cooling

Mechanical

Case Dimension	U - L 95 x W 35.5 x H 77 (mm)
	E - L 95 x W 35.5 x H 92 (mm)
Weight	275g (Ref.)



65 Watt Series

Desktop Type

ATS065T - □ X X X

P : C6 / C14
A : C8

O / P Voltage

Features :

- IEC/EN/UL 62368-1
- 100-240VAC Universal Input
- Regulated Output With Low Ripple Noise
- Safety Agency Requirements and EMI/EMS Certified
- Modified and Custom Design Available
- 1 Year Warranty

Model	O/P Voltage	O/P Current	Watt
ATS065T-□120	12.0V	5.00A	60W
ATS065T-□135	13.5V	4.82A	65W
ATS065T-□150	15.0V	4.34A	65W
ATS065T-□160	16.0V	4.07A	65W
ATS065T-□180	18.0V	3.62A	65W
ATS065T-□190	19.0V	3.43A	65W
ATS065T-□200	20.0V	3.25A	65W
ATS065T-□240	24.0V	2.71A	65W
ATS065T-□241(*)	24.0V	2.71A	65W
ATS065T-P242(*)	24.0V	2.71A	65W
ATS072T-□240	24.0V	3.00A	72W
ATS065T-□300	30.0V	2.71A	65W
ATS065T-□320	32.0V	2.04A	65W
ATS065T-□321(*)	32.0V	2.04A	65W
ATS065T-□375	37.5V	1.73A	65W
ATS065T-□480	48.0V	1.36A	65W
ATS065T-□560	56.0V	1.17A	65W

(*) With peak current design

ATS065T-□241 with peak current 11.0A

ATS065T- P242 with peak current 11.0A

ATS065T-□321 with peak current 3.9A

Input

Voltage	100-240VAC
Line Frequency	50-60Hz
Current	1.4A Max. for 65W / 1.6A Max. for 72W
Protection	Internal Primary Current Fuse
Configuration	IEC60320/C6,C8,C14

Output

Load Regulation	±5% (Typical)
Ripple & Noise	1% Vp-p Max. for Output Voltage@ Full Load
Transient Response	0.5mS for 50% Load Change Typical
Hold-up Time	10mS @ Full Load
Protection	Short Circuit Protection / Over Voltage Protection / Over Current Protection

Electrical

Topology	Switching Flyback
Dielectric Withstand	3000VAC Primary - Secondary
Leakage Current	0.25mA @ 2Pin / 3.5mA @ 3Pin
Efficiency	DoE Level VI, ErP Stage 2, CoC Tier 2
EMC Standards	EN55032
	EN61000-3-2,3
	EN55035
MTBF	300,000 Calculated Hours at 25°C , by Telcordia SR-332

Environmental

Operating Temperature	-20 to + 40°C
Storage Temperature	-20 to + 80°C
Relative Humidity	Operating : 20 to 80% RH
	Storage : 10 to 90% RH
Cooling	Natural Convection Cooling

Mechanical

Case Dimension	L115 x W53 x H38 (mm)
Weight	310g (Ref.)

NEW

I.T.E.

65 Watt Series

Desktop Type



ATS065A1 - □ X X X

A : C8
G : C6
P : C14

O / P Voltage

- Features :**
- IEC/EN/UL 62368-1 3rd Edition
 - 100-240VAC Universal Input
 - Regulated Output With Low Ripple Noise
 - Safety Agency Requirements and EMI/EMS Certified
 - Modified and Custom Design Available
 - 1 Year Warranty

Output	
Load Regulation	±5% (Typical)
Ripple & Noise	1% Vp-p Max. for Output Voltage@ Full Load
Transient Response	0.5mS for 50% Load Change Typical
Hold-up Time	10mS @ Full Load
Protection	Short Circuit Protection / Over Voltage Protection / Over Current Protection

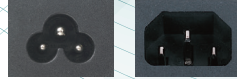
Model	O/P Voltage	O/P Current	Watt
ATS065A1-□120	12.0V	5.00A	60W
ATS065A1-□150	15.0V	4.34A	65W
ATS065A1-□160	16.0V	4.07A	65W
ATS065A1-□180	18.0V	3.62A	65W
ATS065A1-□190	19.0V	3.43A	65W
ATS065A1-□240	24.0V	2.71A	65W
ATS065A1-□480	48.0V	1.36A	65W
ATS065A1-□560	56.0V	1.17A	65W

Electrical	
Topology	Switching Flyback
Dielectric Withstand	3000VAC Primary - Secondary
Leakage Current	0.25mA @ 2Pin / 3.5mA @ 3Pin
Efficiency	DoE Level VI, ErP Stage 2
EMC Standards	EN55032
	EN61000-3-2,3
	EN55035
MTBF	300,000 Calculated Hours at 25°C , by Telcordia SR-332

Input	
Voltage	100-240VAC
Line Frequency	50-60Hz
Current	1.4A Max.
Protection	Internal Primary Current Fuse
Configuration	IEC60320/C6,C8,C14

Environmental	
Operating Temperature	-20 to + 40°C
Storage Temperature	-20 to + 80°C
Relative Humidity	Operating : 20 to 80% RH
	Storage : 10 to 90% RH
Cooling	Natural Convection Cooling

Mechanical	
Case Dimension	L115 x W48.5 x H31.6 (mm)
Weight	220g (Ref.)



90 Watt Series

Desktop Type

ATS090T - P X X X

P : C6 / C14 ← → O / P Voltage

Features :

- IEC/EN/UL 62368-1
- 100-240VAC Universal Input
- Regulated Output With Low Ripple Noise
- Safety Agency Requirements and EMI/EMS Certified
- Modified and Custom Design Available
- 1 Year Warranty

Model	O/P Voltage	O/P Current	Watt
ATS090T-P120	12.0V	7.00A	84W
ATS090T-P150	15.0V	6.00A	90W
ATS090T-P160	16.0V	5.63A	90W
ATS090T-P180	18.0V	5.00A	90W
ATS090T-P190	19.0V	4.74A	90W
ATS090T-P200	20.0V	4.50A	90W
ATS090T-P240	24.0V	3.75A	90W
ATS090T-P300	30.0V	3.00A	90W
ATS090T-P480	48.0V	1.88A	90W
ATS090T-P560	56.0V	1.60A	90W

Input

Voltage	100-240VAC
Line Frequency	50-60Hz
Current	1.2A Max.
Protection	Internal Primary Current Fuse
Configuration	IEC60320/C6,C14

Output

Load Regulation	±5% (Typical)
Ripple & Noise	1% Vp-p Max. for Output Voltage@ Full Load
Transient Response	0.5mS for 50% Load Change Typical
Hold-up Time	10mS @ Full Load
Protection	Short Circuit Protection / Over Voltage Protection / Over Current Protection

Electrical

Topology	Switching Flyback
Dielectric Withstand	3000VAC Primary - Secondary
Leakage Current	3.5mA @ 3Pin
Efficiency	DoE Level VI, ErP Stage 2, CoC Tier 2
EMC Standards	EN55032
	EN61000-3-2,3
	EN55035
MTBF	300,000 Calculated Hours at 25°C, by Telcordia SR-332

Environmental

Operating Temperature	-20 to + 40°C
Storage Temperature	-20 to + 80°C
Relative Humidity	Operating : 20 to 80% RH
	Storage : 10 to 90% RH
Cooling	Natural Convection Cooling

Mechanical

Case Dimension	C6 - L 139 x W 61 x H 36 (mm)
	C14 - L 151 x W 64 x H 36 (mm)
Weight	460g (Ref.)

NEW

I.T.E.



90 Watt Series

Desktop Type

ATS090A1 - □ X X X

G : C6 O / P Voltage
P : C14



Features :

- IEC/EN/UL 62368-1 3rd Edition
- 100-240VAC Universal Input
- Regulated Output With Low Ripple Noise
- Safety Agency Requirements and EMI/EMS Certified
- Modified and Custom Design Available
- 1 Year Warranty

Model	O/P Voltage	O/P Current	Watt
ATS090A1-□120	12.0V	7.50A	90W
ATS090A1-□150	15.0V	6.00A	90W
ATS090A1-□160	16.0V	5.63A	90W
ATS090A1-□180	18.0V	5.00A	90W
ATS090A1-□190	19.0V	4.74A	90W
ATS090A1-□240	24.0V	3.75A	90W
ATS090A1-□480	48.0V	1.88A	90W
ATS090A1-□560	56.0V	1.60A	90W

Input	
Voltage	100-240VAC
Line Frequency	50-60Hz
Current	1.2A Max.
Protection	Internal Primary Current Fuse
Configuration	IEC60320/C6,C14

Output	
Load Regulation	±5% (Typical)
Ripple & Noise	1% Vp-p Max. for Output Voltage@ Full Load
Transient Response	0.5mS for 50% Load Change Typical
Hold-up Time	10mS @ Full Load
Protection	Short Circuit Protection / Over Voltage Protection / Over Current Protection

Electrical	
Topology	LLC
Dielectric Withstand	3000VAC Primary - Secondary
Leakage Current	3.5mA @ 3Pin
Efficiency	DoE Level VI, ErP Stage 2
EMC Standards	EN55032
	EN61000-3-2,3
	EN55035
MTBF	300,000 Calculated Hours at 25°C, by Telcordia SR-332

Environmental	
Operating Temperature	-20 to + 40°C
Storage Temperature	-20 to + 80°C
Relative Humidity	Operating : 20 to 80% RH
	Storage : 10 to 90% RH
Cooling	Natural Convection Cooling

Mechanical	
Case Dimension	L 133.5 x W 53.5 x H 33 (mm)
Weight	330g (Ref.)



120 Watt Series

Desktop Type

ATS120T - P X X X

P : C6 / C14 ← → O / P Voltage



Features :

- IEC/EN/UL 62368-1
- 100-240VAC Universal Input
- Regulated Output With Low Ripple Noise
- Safety Agency Requirements and EMI/EMS Certified
- Modified and Custom Design Available
- 1 Year Warranty

Model	O/P Voltage	O/P Current	Watt
ATS120T-P120	12.0V	9.00A	108W
ATS120T-P150	15.0V	8.00A	120W
ATS120T-P160	16.0V	7.50A	120W
ATS120T-P180	18.0V	6.60A	120W
ATS120T-P190	19.0V	6.30A	120W
ATS120T-P200	20.0V	6.00A	120W
ATS120T-P240	24.0V	5.00A	120W
ATS120T-P300	30.0V	4.00A	120W
ATS120T-P480	48.0V	2.50A	120W
ATS120T-P560	56.0V	2.14A	120W

Input	
Voltage	100-240VAC
Line Frequency	50-60Hz
Current	1.6A Max.
Protection	Internal Primary Current Fuse
Configuration	IEC60320/C6, C14

Output	
Load Regulation	±5% (Typical)
Ripple & Noise	1% Vp-p Max. for Output Voltage @ Full Load
Transient Response	0.5mS for 50% Load Change Typical
Hold-up Time	10mS @ Full Load
Protection	Short Circuit Protection / Over Voltage Protection / Over Current Protection / Over Temperature Protection

Electrical	
Topology	Switching Flyback
Dielectric Withstand	3000VAC Primary - Secondary
Leakage Current	3.5mA @ 3Pin
Efficiency	DoE Level VI, ErP Stage 2, CoC Tier 2
EMC Standards	EN55032
	EN61000-3-2,3
	EN55035
MTBF	300,000 Calculated Hours at 25°C , by Telcordia SR-332

Environmental	
Operating Temperature	-20 to + 40°C
Storage Temperature	-20 to + 80°C
Relative Humidity	Operating : 20 to 80% RH Storage : 10 to 90% RH
Cooling	Natural Convection Cooling

Mechanical	
Case Dimension	L 168 × W 66 × H 39 (mm)
Weight	590g (Ref.)

NEW

I.T.E.



120 Watt Series

Desktop Type

ATS120A1 - P X X X

P : C6 / C14 ← O / P Voltage



- Features :**
- IEC/EN/UL 62368-1 3rd Edition
 - 100-240VAC Universal Input
 - Regulated Output With Low Ripple Noise
 - Safety Agency Requirements and EMI/EMS Certified
 - Modified and Custom Design Available
 - 1 Year Warranty

Model	O/P Voltage	O/P Current	Watt
ATS120A1-P120	12.0V	9.00A	108W
ATS120A1-P150	15.0V	8.00A	120W
ATS120A1-P160	16.0V	7.50A	120W
ATS120A1-P190	19.0V	6.30A	120W
ATS120A1-P240	24.0V	5.00A	120W
ATS120A1-P480	48.0V	2.50A	120W
ATS120A1-P560	56.0V	2.14A	120W

Input	
Voltage	100-240VAC
Line Frequency	50-60Hz
Current	1.6A Max.
Protection	Internal Primary Current Fuse
Configuration	IEC60320/C6, C14

Output	
Load Regulation	±5% (Typical)
Ripple & Noise	1% Vp-p Max. for Output Voltage @ Full Load
Transient Response	0.5mS for 50% Load Change Typical
Hold-up Time	10mS @ Full Load
Protection	Short Circuit Protection / Over Voltage Protection / Over Current Protection / Over Temperature Protection

Electrical	
Topology	LLC
Dielectric Withstand	3000VAC Primary - Secondary
Leakage Current	3.5mA @ 3Pin
Efficiency	DoE Level VI, ErP Stage 2
EMC Standards	EN55032
	EN61000-3-2,3
	EN55035
MTBF	300,000 Calculated Hours at 25°C , by Telcordia SR-332

Environmental	
Operating Temperature	-20 to + 40°C
Storage Temperature	-20 to + 80°C
Relative Humidity	Operating : 20 to 80% RH
	Storage : 10 to 90% RH
Cooling	Natural Convection Cooling

Mechanical	
Case Dimension	L 140.5 × W 60 × H 35 (mm)
Weight	390g (Ref.)

NEW

I.T.E.

160 Watt Series

Desktop Type



ATS160A1 - □ X X X

G : C6 ← P : C14 → O / P Voltage

Features :

- IEC/EN/UL 62368-1 3rd Edition
- 100-240VAC Universal Input
- Regulated Output With Low Ripple Noise
- Safety Agency Requirements and EMI/EMS Certified
- Modified and Custom Design Available
- 1 Year Warranty

Model	O/P Voltage	O/P Current	Watt
ATS160A1-□120	12.0V	12.50A	150W
ATS160A1-□150	15.0V	10.00A	150W
ATS160A1-□190	19.0V	8.40A	160W
ATS160A1-□240	24.0V	6.60A	160W
ATS160A1-□480	48.0V	3.30A	160W
ATS160A1-□560	56.0V	2.86A	160W

Input

Voltage	100-240VAC
Line Frequency	50-60Hz
Current	2.2A Max.
Protection	Internal Primary Current Fuse
Configuration	IEC60320/C6, C14

Output

Load Regulation	±5% (Typical)
Ripple & Noise	1% Vp-p Max. for Output Voltage @ Full Load
Transient Response	0.5mS for 50% Load Change Typical
Hold-up Time	10mS @ Full Load
Protection	Short Circuit Protection / Over Voltage Protection / Over Current Protection / Over Temperature Protection

Electrical

Topology	LLC
Dielectric Withstand	3000VAC Primary - Secondary
Leakage Current	3.5mA @ 3Pin
Efficiency	DoE Level VI, ErP Stage 2
EMC Standards	EN55032
	EN61000-3-2,3
	EN55035
MTBF	300,000 Calculated Hours at 25°C , by Telcordia SR-332

Environmental

Operating Temperature	-20 to + 40°C
Storage Temperature	-20 to + 80°C
Relative Humidity	Operating : 20 to 80% RH
	Storage : 10 to 90% RH
Cooling	Natural Convection Cooling

Mechanical

Case Dimension	L 164.5 × W 66 × H 34.8 (mm)
Weight	500g (Ref.)



RoHS

NEW

I.T.E.



200 Watt Series

Desktop Type

ATS200A1 - □ X X X

G : C6 ← P : C14 → O / P Voltage



Features :

- IEC/EN/UL 62368-1 3rd Edition
- 100-240VAC Universal Input
- Regulated Output With Low Ripple Noise
- Safety Agency Requirements and EMI/EMS Certified
- Modified and Custom Design Available
- 1 Year Warranty

Model	O/P Voltage	O/P Current	Watt
ATS200A1-□120	12.0V	16.00A	192W
ATS200A1-□190	19.0V	10.50A	200W
ATS200A1-□240	24.0V	8.30A	200W
ATS200A1-□480	48.0V	4.17A	200W
ATS200A1-□560	56.0V	3.58A	200W

Input	
Voltage	100-240VAC
Line Frequency	50-60Hz
Current	2.4 A Max.
Protection	Internal Primary Current Fuse
Configuration	IEC60320/C6, C14

Output	
Load Regulation	±5% (Typical)
Ripple & Noise	1% Vp-p Max. for Output Voltage @ Full Load
Transient Response	0.5mS for 50% Load Change Typical
Hold-up Time	10mS @ Full Load
Protection	Short Circuit Protection / Over Voltage Protection / Over Current Protection / Over Temperature Protection

Electrical	
Topology	LLC
Dielectric Withstand	3000VAC Primary - Secondary
Leakage Current	3.5mA @ 3Pin
Efficiency	DoE Level VI, ErP Stage 2
EMC Standards	EN55032
	EN61000-3-2,3
	EN55035
MTBF	300,000 Calculated Hours at 25°C , by Telcordia SR-332

Environmental	
Operating Temperature	-20 to + 40°C
Storage Temperature	-20 to + 80°C
Relative Humidity	Operating : 20 to 80% RH
	Storage : 10 to 90% RH
Cooling	Natural Convection Cooling

Mechanical	
Case Dimension	L 175.2 × W 74 × H 42 (mm)
Weight	738g (Ref.)



R33154 RoHS RoHS



I.T.E.



240 Watt Series

Desktop Type

ATS240A1 - P X X X

P : C14 ← → O / P Voltage



Features :

- IEC/EN/UL 62368-1 3rd Edition
- 100-240 VAC Universal Input
- Regulated Output with Low Ripple Noise
- Safety Agency Requirements and EMI/EMS Certified
- Modified and Custom Design Available
- 1 Year Warranty

Model	O/P Voltage	O/P Current	Watt
ATS240A1-P120	12.0V	20.00A	240W
ATS240A1-P190	19.0V	12.63A	240W
ATS240A1-P240	24.0V	10.00A	240W
ATS240A1-P480	48.0V	5.00A	240W
ATS240A1-P560	56.0V	4.28A	240W

Input	
Voltage	100-240VAC
Line Frequency	50-60Hz
Current	3.3A Max.
Protection	Internal Primary Current Fuse
Configuration	IEC60320/C14

Output	
Load Regulation	±5% (Typical)
Ripple & Noise	1% Vp-p Max. for Output Voltage @ Full Load
Transient Response	0.5mS for 50% Load Change Typical
Hold-up Time	10mS @ Full Load
Protection	Short Circuit Protection / Over Voltage Protection / Over Current Protection / Over Temperature Protection

Electrical	
Topology	LLC
Dielectric Withstand	3000VAC Primary - Secondary
Leakage Current	3.5mA @ 3Pin
Efficiency	DoE Level VI, ErP Stage 2
EMC Standards	EN55032
	EN61000-3-2,3
	EN55035
MTBF	300,000 Calculated Hours at 25°C , by Telcordia SR-332

Environmental	
Operating Temperature	-20 to + 40°C
Storage Temperature	-20 to + 80°C
Relative Humidity	Operating : 20 to 80% RH
	Storage : 10 to 90% RH
Cooling	Natural Convection Cooling

Mechanical	
Case Dimension	L 183.2 × W 81 × H 42.3 (mm)
Weight	860g (Ref.)



RoHS

NEW

I.T.E.



300 Watt Series

Desktop Type

ATS300A1 - P X X X

P : C14 ← → O / P Voltage



Features :

- IEC/EN/UL 62368-1 3rd Edition
- 100-240VAC Universal Input
- Regulated Output With Low Ripple Noise
- Safety Agency Requirements and EMI/EMS Certified
- Modified and Custom Design Available
- 1 Year Warranty

Model	O/P Voltage	O/P Current	Watt
ATS300A1-P120	12.0V	24.00A	288W
ATS300A1-P190	19.0V	15.79A	300W
ATS300A1-P240	24.0V	12.50A	300W
ATS300A1-P480	48.0V	6.25A	300W
ATS300A1-P560	56.0V	5.36A	300W

Input	
Voltage	100-240VAC
Line Frequency	50-60Hz
Current	3.5A Max.
Protection	Internal Primary Current Fuse
Configuration	IEC60320/C14

Output	
Load Regulation	±5% (Typical)
Ripple & Noise	1% Vp-p Max. for Output Voltage @ Full Load
Transient Response	0.5mS for 50% Load Change Typical
Hold-up Time	10mS @ Full Load
Protection	Short Circuit Protection / Over Voltage Protection / Over Current Protection / Over Temperature Protection

Electrical	
Topology	LLC
Dielectric Withstand	3000VAC Primary - Secondary
Leakage Current	3.5mA @ 3Pin
Efficiency	DoE Level VI
EMC Standards	EN55032
	EN61000-3-2,3
	EN55035
MTBF	300,000 Calculated Hours at 25°C , by Telcordia SR-332

Environmental	
Operating Temperature	-20 to + 40°C
Storage Temperature	-20 to + 80°C
Relative Humidity	Operating : 20 to 80% RH
	Storage : 10 to 90% RH
Cooling	Natural Convection Cooling

Mechanical	
Case Dimension	L 204 × W 94 × H 43.5 (mm)
Weight	1110g (Ref.)



USB Type-C P.D. 45 / 65 Watt Series

Desktop Type



Features :

- IEC/EN/UL 62368-1
- 100-240VAC Universal Input
- Power Delivery 2.0
- System control through CC1
- Regulated Output With Low Ripple Noise
- Safety Agency Requirements and EMI/EMS Certified
- Modified and Custom Design Available
- 1 Year Warranty

Model	O/P Voltage	O/P Current	Watt
APD045T-A200	5.0V	3.00A	15W
	9.0V	3.00A	27W
	12.0V	3.00A	36W
	15.0V	3.00A	45W
	20.0V	2.25A	45W
APD065T-A200	5.0V	3.00A	15W
	9.0V	3.00A	27W
	12.0V	3.00A	36W
	15.0V	3.00A	45W
	19.0V	3.43A	65W
	20.0V	3.25A	65W

Input

Voltage	100-240VAC
Line Frequency	50-60Hz
Current	45W : 1.2A Max. / 65W : 1.6A Max.
Protection	Internal Primary Current Fuse
Configuration	IEC60320/C8

Output

Load Regulation	±5% (Typical)
Ripple & Noise	2% Vp-p Max. for Output Voltage@ Full Load
Transient Response	0.5mS for 50% Load Change Typical
Hold-up Time	10mS @ Full Load
Protection	Short Circuit Protection / Over Voltage Protection / Over Current Protection

Electrical

Topology	Switching Flyback
Dielectric Withstand	3000VAC Primary - Secondary
Leakage Current	0.25mA
Efficiency	DoE Level VI, ErP Stage 2
EMC Standards	EN55032
	EN61000-3-2,3
	EN55035
MTBF	300,000 Calculated Hours at 25°C , by Telcordia SR-332

Environmental

Operating Temperature	-20 to + 40°C
Storage Temperature	-20 to + 80°C
Relative Humidity	Operating : 20 to 80% RH
	Storage : 10 to 90% RH
Cooling	Natural Convection Cooling

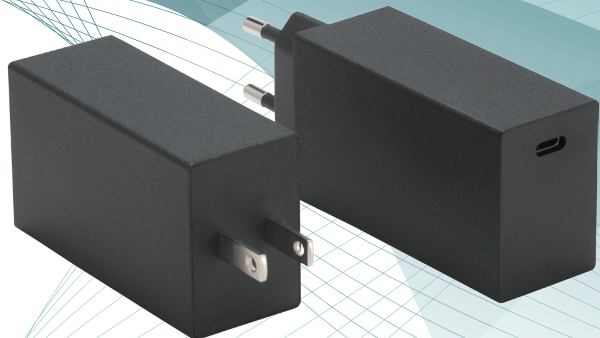
Mechanical

Case Dimension	APD045T : L 99 x W 33 x H 50 (mm)
	APD065T : L 119 x W 60 x H 36 (mm)
Weight	APD045T : 190g (Ref.)
	APD065T : 285g (Ref.)



NEW

I.T.E.



USB Type-C P.D. 60 Watt GaN Series

Wall Mount Type
USA / Japan / Taiwan / Europe

ATP060PD - W200□

U : US Plug
E : EU Plug

- Features :**
- IEC/EN/UL 62368-1 3rd Edition
 - 100-240VAC Universal Input
 - P.D. 3.0 / QC 4.0+ / QC 4.0
 - Regulated Output With Low Ripple Noise
 - Safety Agency Requirements and EMI/EMS Certified
 - Modified and Custom Design Available
 - 1 Year Warranty

Model	O/P Voltage	O/P Current	Watt
ATP060PD-W200□	5.0V	3.0A	15W
	9.0V	3.0A	27W
	12.0V	3.0A	36W
	15.0V	3.0A	45W
	20.0V	3.0A	60W

Input	
Voltage	100-240VAC
Line Frequency	50-60Hz
Current	1.5A Max.
Protection	Internal Primary Current Fuse
Configuration	U for US Plug
	E for EU Plug

Output	
Load Regulation	±5% (Typical)
Ripple & Noise	300m Vp-p Max. for Output Voltage@ Full Load
Transient Response	0.5mS for 50% Load Change Typical
Hold-up Time	10mS @ Full Load
Protection	Short Circuit Protection / Over Voltage Protection / Over Current Protection

Electrical	
Topology	Switching Flyback
Dielectric Withstand	3000VAC Primary - Secondary
Leakage Current	0.25mA
Efficiency	DoE Level VI, ErP Stage 2
EMC Standards	EN55032
	EN61000-3-2,3
	EN55035
MTBF	300,000 Calculated Hours at 25°C , by Telcordia SR-332

Environmental	
Operating Temperature	-20 to + 40°C
Storage Temperature	-20 to + 80°C
Relative Humidity	Operating : 20 to 80% RH
	Storage : 10 to 90% RH
Cooling	Natural Convection Cooling

Mechanical	
Case Dimension	U - L 88.9 × W 41.7 × H 29.5 (mm)
	E - L 110.1 × W 41.7 × H 29.5 (mm)
Weight	120g (Ref.)

NEW

I.T.E.



Dual USB-C P.D. 100W GaN Adapter

Wall Mount Type
USA / Japan / Taiwan

ATP100A1 - W200U

↳ U : US Plug

Features :

- IEC/EN/UL 62368-1 3rd Edition
- 100-240VAC Universal Input
- P.D. 3.0 / QC 4.0+ / QC 4.0
- Regulated Output With Low Ripple Noise
- Safety Agency Requirements and EMI/EMS Certified
- Modified and Custom Design Available
- 1 Year Warranty

Model	O/P Voltage	O/P Current	Watt
ATP100A1-W200U	5.0V	3.0A	15W
	9.0V	3.0A	27W
	12.0V	3.0A	36W
	15.0V	3.0A	45W
	20.0V	5.0A	100W

Input	
Voltage	100-240VAC
Line Frequency	50-60Hz
Current	1.5A Max.
Protection	Internal Primary Current Fuse
Configuration	U for US Plug

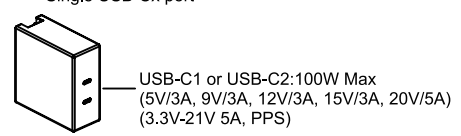
Output	
Load Regulation	±5% (Typical)
Ripple & Noise	300m Vp-p Max. for Output Voltage@ Full Load
Transient Response	0.5mS for 50% Load Change Typical
Hold-up Time	10mS @ Full Load
Protection	Short Circuit Protection / Over Voltage Protection / Over Current Protection

Electrical	
Topology	Switching Flyback
Dielectric Withstand	3000VAC Primary - Secondary
Leakage Current	0.25mA
Efficiency	DoE Level VI, ErP Stage 2
EMC Standards	EN55032
	EN61000-3-2,3
	EN55035
MTBF	300,000 Calculated Hours at 25°C , by Telcordia SR-332

Environmental	
Operating Temperature	-20 to + 40°C
Storage Temperature	-20 to + 80°C
Relative Humidity	Operating : 20 to 80% RH
	Storage : 10 to 90% RH
Cooling	Natural Convection Cooling

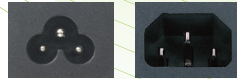
Mechanical	
Case Dimension	L 74.5 × W 74 × H 32 (mm)
Weight	280g (Ref.)

Single USB-Cx port



Dual USB-Cx ports





GaN FET Technology 120 Watt Series

Small Size Desktop Type

ATS120TS - P X X X

P : C6 / C14 ← → O / P Voltage

Features :

- IEC/EN/UL 62368-1
- 100-240 VAC Universal Input
- Gallium Nitride Based Design
- High Power Density : 9.1W / in³
- With 200kHz Switching Frequency
- Efficiency up to 94%
- Regulated Output with Low Ripple Noise
- Modified and Custom Design Available
- 1 Year Warranty

Model	O/P Voltage	O/P Current	Watt
ATS120TS-P120	12.0V	9.00A	108W
ATS120TS-P190	19.0V	6.30A	120W
ATS120TS-P200	20.0V	6.00A	120W
ATS120TS-P240	24.0V	5.00A	120W
ATS120TS-P480	48.0V	2.50A	120W
ATS120TS-P560	56.0V	2.14A	120W

Input

Voltage	100-240VAC
Line Frequency	50-60Hz
Current	1.6A Max.
Protection	Internal Primary Current Fuse
Configuration	IEC60320/C6, C14

Output

Load Regulation	±5% (Typical)
Ripple & Noise	1% Vp-p Max. for Output Voltage @ Full Load
Transient Response	0.5mS for 50% Load Change Typical
Hold-up Time	10mS @ Full Load
Protection	Short Circuit Protection / Over Voltage Protection / Over Current Protection / Over Temperature Protection

Electrical

Topology	LLC
Dielectric Withstand	3000VAC Primary - Secondary
Leakage Current	3.5mA @ 3Pin
Efficiency	DoE Level VI, ErP Stage 2, CoC Tier 2
EMC Standards	EN55032
	EN61000-3-2,3
	EN55035
MTBF	300,000 Calculated Hours at 25°C , by Telcordia SR-332

Environmental

Operating Temperature	-20 to + 40°C
Storage Temperature	-20 to + 80°C
Relative Humidity	Operating : 20 to 80% RH
	Storage : 10 to 90% RH
Cooling	Natural Convection Cooling

Mechanical

Case Dimension	L 132 × W 51 × H 32 (mm)
Weight	336g (Ref.)

GaN FET Technology

160 Watt Series

Small Size Desktop Type

ATS160TS - □ X X X

P : C6 / C14 ← O / P Voltage
A : C8



Features :

- IEC/EN/UL 62368-1
- 100-240 VAC Universal Input
- Gallium Nitride Based Design
- High Power Density : 10.0W / in³
- With 200kHz Switching Frequency
- Efficiency up to 95%
- Regulated Output with Low Ripple Noise
- Modified and Custom Design Available
- 1 Year Warranty

Model	O/P Voltage	O/P Current	Watt
ATS160TS-□120	12.0V	12.50A	150W
ATS160TS-□190	19.0V	8.40A	160W
ATS160TS-□240	24.0V	6.60A	160W
ATS160TS-□480	48.0V	3.30A	160W
ATS160TS-□560	56.0V	2.86A	160W

Input

Voltage	100-240VAC
Line Frequency	50-60Hz
Current	2.2A Max.
Protection	Internal Primary Current Fuse
Configuration	IEC60320/C6, C8, C14

Output

Load Regulation	±5% (Typical)
Ripple & Noise	1% Vp-p Max. for Output Voltage @ Full Load
Transient Response	0.5mS for 50% Load Change Typical
Hold-up Time	10mS @ Full Load
Protection	Short Circuit Protection / Over Voltage Protection / Over Current Protection / Over Temperature Protection

Electrical

Topology	LLC
Dielectric Withstand	3000VAC Primary - Secondary
Leakage Current	0.25mA @ 2Pin / 3.5mA @ 3Pin
Efficiency	DoE Level VI, ErP Stage 2, CoC Tier 2
EMC Standards	EN55032
	EN61000-3-2,3
	EN55035
MTBF	300,000 Calculated Hours at 25°C , by Telcordia SR-332

Environmental

Operating Temperature	-20 to + 40°C
Storage Temperature	-20 to + 80°C
Relative Humidity	Operating : 20 to 80% RH
	Storage : 10 to 90% RH
Cooling	Natural Convection Cooling

Mechanical

Case Dimension	C6 & C14 - L 161 × W 54.2 × H 33.2 (mm)
	C8 - L 150 × W 54 × H 33 (mm)
Weight	530g (Ref.)



GaN FET Technology 200 Watt Series

Small Size Desktop Type

ATS200TS - □ X X X

P : C6 / C14
A : C8

→ O / P Voltage



Features :

- IEC/EN/UL 62368-1
- 100-240 VAC Universal Input
- Gallium Nitride Based Design
- High Power Density : 12.5W / in³
- With 250kHz Switching Frequency
- Efficiency up to 95%
- Regulated Output with Low Ripple Noise
- Modified and Custom Design Available
- 1 Year Warranty

Model	O/P Voltage	O/P Current	Watt
ATS200TS-□120	12.0V	16.0A	192W
ATS200TS-□180	18.0V	11.1A	200W
ATS200TS-□190	19.0V	10.5A	200W
ATS200TS-□191	19.5V	10.2A	200W
ATS200TS-□200	20.0V	10.0A	200W
ATS200TS-□240	24.0V	8.3A	200W
ATS200TS-□480	48.0V	4.2A	200W
ATS200TS-□560	56.0V	3.6A	200W

Input	
Voltage	100-240VAC
Line Frequency	50-60Hz
Current	2.4A Max.
Protection	Internal Primary Current Fuse
Configuration	IEC60320/C6, C8, C14

Output

Load Regulation	±5% (Typical)
Ripple & Noise	1% Vp-p Max. for Output Voltage @ Full Load
Transient Response	0.5mS for 50% Load Change Typical
Hold-up Time	10mS @ Full Load
Protection	Short Circuit Protection / Over Voltage Protection / Over Current Protection / Over Temperature Protection

Electrical

Topology	LLC
Dielectric Withstand	3000VAC Primary - Secondary
Leakage Current	0.25mA @ 2Pin / 3.5mA @ 3Pin
Efficiency	DoE Level VI, ErP Stage 2, CoC Tier 2
EMC Standards	EN55032
	EN61000-3-2,3
	EN55035
MTBF	300,000 Calculated Hours at 25°C , by Telcordia SR-332

Environmental

Operating Temperature	-20 to + 40°C
Storage Temperature	-20 to + 80°C
Relative Humidity	Operating : 20 to 80% RH
	Storage : 10 to 90% RH
Cooling	Natural Convection Cooling

Mechanical

Case Dimension	C6 & C14 - L 161 × W 54.2 × H 33.2 (mm)
	C8 - L 150 × W 54 × H 33 (mm)
Weight	560g (Ref.)

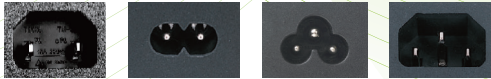


GaN FET Technology 200 Watt Series

Small Size Desktop Type

ATM200TS - □ X X X

P : C6 / C14 ←
A : C8 / C18 → O / P Voltage



Features :

- IEC/EN/ANSI/AAMI ES60601-1 (Edition 3.1)
- IEC/EN/ANSI/AAMI HA60601-1-11 (Class II Only)
- EMC : IEC60601-1-2 : 2014 (Edition 4.0)
- 100-240 VAC Universal Input
- Gallium Nitride Based Design
- High Power Density : 11W / in³
- With 250kHz Switching Frequency
- Means of Protection: 2 X MOPP
- Touch Current : < 100µA
- Efficiency up to 95%
- Regulated Output with Low Ripple Noise
- Modified and Custom Design Available
- 2 Years Warranty

Model	O/P Voltage	O/P Current	Watt
ATM200TS-□120	12.0V	16.0A	192W
ATM200TS-□150	15.0V	13.0A	195W
ATM200TS-□190	19.0V	10.5A	200W
ATM200TS-□240	24.0V	8.3A	200W
ATM200TS-□480	48.0V	4.2A	200W

Input	
Voltage	100-240VAC
Line Frequency	50-60Hz
Current	2.4-0.9A Max.
Protection	Internal Primary Current Fuse
Configuration	IEC60320/C6, C8, C14

Output	
Load Regulation	±5% (Typical)
Ripple & Noise	1% Vp-p Max. for Output Voltage @ Full Load
Transient Response	0.5mS for 50% Load Change Typical
Hold-up Time	10mS @ Full Load
Protection	Short Circuit Protection / Over Voltage Protection / Over Current Protection / Over Temperature Protection

Electrical	
Topology	LLC
Dielectric Withstand	4000VAC Primary - Secondary
Touch Current	< 100µA
Efficiency	DoE Level VI, ErP Stage 2, CoC Tier 2
EMC Standards	EN55011
	EN61000-3-2,3
	EN61000-4-2,3,4,5,6,8,11
MTBF	300,000 Calculated Hours at 25°C , by Telcordia SR-332

Environmental	
Operating Temperature	-20 to + 40°C
Storage Temperature	-20 to + 80°C
Relative Humidity	Operating : 20 to 80% RH
	Storage : 10 to 90% RH
Cooling	Natural Convection Cooling

Mechanical	
Case Dimension	L 166.5 × W 54.2 × H 33 (mm)
Weight	620g (Ref.)

GaN FET Technology 250 Watt Series

Small Size Desktop Type

ATM250TS - □ X X X

P : C14
A : C18

→ O / P Voltage



Features :

- IEC/EN/ANSI/AAMI ES60601-1 (Edition 3.1)
- IEC/EN/ANSI/AAMI HA60601-1-11 (Class II Only)
- EMC : IEC60601-1-2 : 2014 (Edition 4.0)
- IEC/EN/UL 62368-1
- 100-240 VAC Universal Input
- Gallium Nitride Based Design
- High Power Density : 11.1W / in³
- With 250kHz Switching Frequency
- Means of Protection: 2 X MOPP
- Touch Current : < 100μA
- Efficiency up to 95%
- Regulated Output with Low Ripple Noise
- Modified and Custom Design Available
- 2 Years Warranty

Model	O/P Voltage	O/P Current	Watt
ATM250TS-□120	12.0V	19.00A	228W
ATM250TS-□190	19.0V	13.20A	250W
ATM250TS-□240	24.0V	10.40A	250W
ATM250TS-□480	48.0V	5.20A	250W
ATM250TS-□560(*)	56.0V	4.48A	250W

(*) I.T.E. Only

Input

Voltage	100-240VAC
Line Frequency	50-60Hz
Current	2.9-1.3A Max.
Protection	Internal Primary Current Fuse
Configuration	IEC60320/C14, C18

Output

Load Regulation	±5% (Typical)
Ripple & Noise	1% Vp-p Max. for Output Voltage @ Full Load
Transient Response	0.5mS for 50% Load Change Typical
Hold-up Time	10mS @ Full Load
Protection	Short Circuit Protection / Over Voltage Protection / Over Current Protection / Over Temperature Protection

Electrical

Topology	LLC
Dielectric Withstand	4000VAC Primary - Secondary
Touch Current	< 100μA
Efficiency	DoE Level VI, ErP Stage 2, CoC Tier 2
EMC Standards	EN55032 / EN55011
	EN61000-3-2,3
	EN55035 / EN61000-4-2,3,4,5,6,8,11
MTBF	300,000 Calculated Hours at 25°C , by Telcordia SR-332

Environmental

Operating Temperature	-20 to + 40°C
Storage Temperature	-20 to + 80°C
Relative Humidity	Operating : 20 to 80% RH
	Storage : 10 to 90% RH
Cooling	Natural Convection Cooling

Mechanical

Case Dimension	L 173 × W 67 × H 32.1 (mm)
Weight	855g (Ref.)

GaN FET Technology 300 Watt Series

Small Size Desktop Type

ATM300TS - □ X X X

P : C14 ← O / P Voltage
A : C18



Features :

- IEC/EN/ANSI/AAMI ES60601-1 (Edition 3.1)
- IEC/EN/ANSI/AAMI HA60601-1-11 (Class II Only)
- EMC : IEC60601-1-2 : 2014 (Edition 4.0)
- IEC/EN/UL 62368-1
- 100-240 VAC Universal Input
- Gallium Nitride Based Design
- High Power Density : 9W / in³
- With 250kHz Switching Frequency
- Means of Protection: 2 X MOPP
- Touch Current : < 100µA
- Efficiency up to 95%
- Regulated Output with Low Ripple Noise
- Modified and Custom Design Available
- 2 Years Warranty

Model	O/P Voltage	O/P Current	Watt
ATM300TS-□120	12.0V	24.00A	288W
ATM300TS-□150	15.0V	20.00A	300W
ATM300TS-□190	19.0V	15.79A	300W
ATM300TS-□240	24.0V	12.50A	300W
ATM300TS-□480	48.0V	6.25A	300W
ATM300TS-□560(*)	56.0V	5.36A	300W

(*) I.T.E. Only

Input	
Voltage	100-240VAC
Line Frequency	50-60Hz
Current	3.5-1.5A Max.
Protection	Internal Primary Current Fuse
Configuration	IEC60320/C14, C18

Output

Load Regulation	±5% (Typical)
Ripple & Noise	1% Vp-p Max. for Output Voltage @ Full Load
Transient Response	0.5mS for 50% Load Change Typical
Hold-up Time	10mS @ Full Load
Protection	Short Circuit Protection / Over Voltage Protection / Over Current Protection / Over Temperature Protection

Electrical

Topology	LLC
Dielectric Withstand	4000VAC Primary - Secondary
Touch Current	< 100µA
Efficiency	DoE Level VI
EMC Standards	EN55032 / EN55011
	EN61000-3-2,3
	EN55035 / EN61000-4-2,3,4,5,6,8,11
MTBF	300,000 Calculated Hours at 25°C , by Telcordia SR-332

Environmental

Operating Temperature	-20 to + 40°C
Storage Temperature	-20 to + 80°C
Relative Humidity	Operating : 20 to 80% RH
	Storage : 10 to 90% RH
Cooling	Natural Convection Cooling

Mechanical

Case Dimension	L 183 × W 85 × H 35 (mm)
Weight	1000g (Ref.)

NEW

I.T.E.

Medical



GaN FET Technology 450 Watt Series

Desktop Type

ATM450A2 - P X X X

P : C14 ← → O / P Voltage



Features :

- IEC/EN/ANSI/AAMI ES60601-1 (Edition 3.1)
- EMC : IEC60601-1-2 : 2014 (Edition 4.0)
- IEC/EN/UL 62368-1 3rd Edition
- 100-240 VAC Universal Input
- Gallium Nitride Based Design
- Means of Protection: 2 X MOPP
- Touch Current : < 100µA
- Efficiency up to 95%
- Regulated Output with Low Ripple Noise
- Modified and Custom Design Available
- 2 Years Warranty

Model	O/P Voltage	O/P Current	Watt
ATM450A2-P120	12.0V	33.34A	400W
ATM450A2-P240	24.0V	18.75A	450W
ATM450A2-P480	48.0V	9.38A	450W
ATM450A2-P560	56.0V	8.05A	450W

Input	
Voltage	100-240VAC
Line Frequency	50-60Hz
Current	5.3-2.2A Max.
Protection	Internal Primary Current Fuse
Configuration	IEC60320/C14

Output	
Load Regulation	±5% (Typical)
Ripple & Noise	1% Vp-p Max. for Output Voltage @ Full Load
Transient Response	0.5mS for 50% Load Change Typical
Hold-up Time	10mS @ Full Load
Protection	Short Circuit Protection / Over Voltage Protection / Over Current Protection / Over Temperature Protection

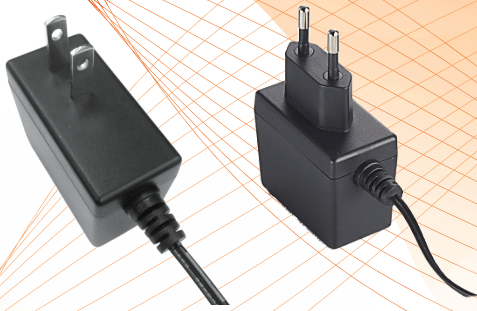
Electrical	
Topology	LLC
Dielectric Withstand	4000VAC Primary - Secondary
Touch Current	< 100µA
Efficiency	DoE Level VI
EMC Standards	EN55032 / EN55011
	EN61000-3-2,3
	EN55035 / EN61000-4-2,3,4,5,6,8,11
MTBF	300,000 Calculated Hours at 25°C , by Telcordia SR-332

Environmental	
Operating Temperature	-20 to + 40°C
Storage Temperature	-20 to + 80°C
Relative Humidity	Operating : 20 to 80% RH
	Storage : 10 to 90% RH
Cooling	Natural Convection Cooling

Mechanical	
Case Dimension	L 254 × W 116 × H 47 (mm)
Weight	1600g (Ref.)



RoHS



6 Watt Series

Wall Mount Type
USA / Europe

ATM006T - W X X X □

O/P Voltage ←

→ U : US Plug
E : EU Plug

Features :

- IEC/EN/ANSI/AAMI ES60601-1 (Edition 3.1)
- EMC : IEC60601-1-2 : 2014 (Edition 4.0)
- Means of Protection : 2 X MOPP
- Touch Current : < 100µA
- 100-240VAC Universal Input
- Regulated Output With Low Ripple Noise
- Safety Agency Requirements and EMI/EMS Certified
- Modified and Custom Design Available
- 2 Years Warranty

Model	O/P Voltage	O/P Current	Watt
ATM006T-W050□	5.0V	1.2A	6.0W
ATM006T-W060□	6.0V	1.0A	6.0W
ATM006T-W075□	7.5V	1.0A	7.5W
ATM006T-W090□	9.0V	0.7A	6.3W
ATM006T-W120□	12.0V	0.5A	6.0W

Input

Voltage	100-240VAC
Line Frequency	50-60Hz
Current	0.19A-0.1A
Protection	Internal Primary Current Fuse
Configuration	U for US Plug
	E for EU Plug

Output

Load Regulation	±5% (Typical)
Ripple & Noise	2% Vp-p Max. for Output Voltage @ Full Load
Transient Response	0.5mS for 50% Load Change Typical
Hold-up Time	10mS @ Full Load
Protection	Short Circuit Protection / Over Voltage Protection / Over Current Protection

Electrical

Topology	Switching Flyback
Dielectric Withstand	4000VAC Primary - Secondary
Touch Current	< 100µA
Efficiency	Meet DoE Level VI, ErP Stage 2, CoC Tier 2
EMC Standards	EN55011
	EN61000-3-2,3
	EN61000-4-2,3,4,5,6,8,11
MTBF	300,000 Calculated Hours at 25°C , by Telcordia SR-332

Environmental

Operating Temperature	-20 to + 40°C
Storage Temperature	-20 to + 80°C
Relative Humidity	Operating : 20 to 80% RH
	Storage : 10 to 90% RH
Cooling	Natural Convection Cooling

Mechanical

Case Dimension	U - L 56 × W 28 × H 59 (mm)
	E - L 56 × W 28 × H 79 (mm)
Weight	U : 68g E : 80g (Ref.)



12 Watt Series

Wall Mount Type
USA / Europe / UK / Australia /
China / AC Plug Changeable

ATM012T - W X X X □ □

O / P Voltage

U : US Plug

E : EU Plug

B : UK Plug

A : AU Plug

C : CN Plug

V : Changeable Plug

Blank : with DC cord
U : with USB A port

Features :

- IEC/EN/ANSI/AAMI ES60601-1 (Edition 3.1)
- EMC : IEC60601-1-2 : 2014 (Edition 4.0)
- IEC/EN/UL 62368-1 3rd Edition
- Means of Protection: 2 X MOPP
- Touch Current : < 100µA
- 100-240VAC Universal Input
- Regulated Output With Low Ripple Noise
- Safety Agency Requirements and EMI/EMS Certified
- Modified and Custom Design Available
- 2 Years Warranty

Model	O/P Voltage	O/P Current	Watt
ATM012T-W033□	3.3V	2.00A	6.60W
ATM012T-W050□□	5.0V	2.00A	10.00W
ATM012T-W051□	5.0V	3.00A	15.00W
ATM012T-W060□	5.9V	2.00A	11.80W
ATM012T-W062□	6.2V	2.00A	12.40W
ATM012T-W090□	9.0V	1.20A	10.80W
ATM012T-W120□	12.0V	1.00A	12.00W
ATM012T-W150□	15.0V	0.80A	12.00W
ATM012T-W180□	18.0V	0.67A	12.06W
ATM012T-W240□	24.0V	0.50A	12.00W

Input	
Voltage	100-240VAC
Line Frequency	50-60Hz
Current	0.32A-0.19A
Protection	Internal Primary Current Fuse
Configuration	U for US Plug
	E for EU Plug
	B for UK Plug
	A for AU Plug
	C for CN Plug
	V for Changeable Plug

Output

Load Regulation	±5% (Typical)
Ripple & Noise	2% Vp-p Max. for Output Voltage @ Full Load
Transient Response	0.5mS for 50% Load Change Typical
Hold-up Time	10mS @ Full Load
Protection	Short Circuit Protection / Over Voltage Protection / Over Current Protection

Electrical

Topology	Switching Flyback
Dielectric Withstand	4000VAC Primary - Secondary
Touch Current	< 100µA
Efficiency	Meet DoE Level VI, ErP Stage 2, CoC Tier 2
EMC Standards	EN55011
	EN61000-3-2,3
	EN61000-4-2,3,4,5,6,8,11
MTBF	300,000 Calculated Hours at 25°C , by Telcordia SR-332

Environmental

Operating Temperature	-20 to + 40°C
Storage Temperature	-20 to + 80°C
Relative Humidity	Operating : 20 to 80% RH
	Storage : 10 to 90% RH
Cooling	Natural Convection Cooling

Mechanical

Case Dimension	U - L 80.2 × W 46 × H 57.5(mm)
	E - L 80.2 × W 46 × H 68.7(mm)
	B - L 80.2 × W 49.6 × H 62.7(mm)
	A - L 80.2 × W 56 × H 57.5(mm)
	C - L 80.2 × W 46 × H 57.5(mm)
	V - L 80.2 × W 46 × H 40.5(mm)
Weight	U : 140g E : 145g B : 148g
	A : 144g C : 140g V : 140g(Ref.)



24 Watt Series

Wall Mount Type
USA / Europe / UK / AC Plug Changeable

ATM024T - W X X X □

O/P Voltage ←

→ U : US Plug
E : EU Plug
B : UK Plug
V : Changeable Plug

Features :

- IEC/EN/ANSI/AAMI ES60601-1 (Edition 3.1)
- EMC : IEC60601-1-2 : 2014 (Edition 4.0)
- Means of Protection: 2 X MOPP
- Touch Current : < 100µA
- 100-240VAC Universal Input
- Regulated Output With Low Ripple Noise
- Safety Agency Requirements and EMI/EMS Certified
- Modified and Custom Design Available
- 2 Years Warranty

Model	O/P Voltage	O/P Current	Watt
ATM024T-W050□	5.0V	4.0A	20.0W
ATM024T-W090□	9.0V	2.5A	22.5W
ATM024T-W120□	12.0V	2.0A	24.0W
ATM024T-W150□	15.0V	1.6A	24.0W
ATM024T-W240□	24.0V	1.0A	24.0W
ATM024T-W480□	48.0V	0.5A	24.0W

Input

Voltage	100-240VAC
Line Frequency	50-60Hz
Current	0.58A-0.32A
Protection	Internal Primary Current Fuse
Configuration	U for US Plug
	E for EU Plug
	B for UK Plug
	V for Changeable Plug



Output

Load Regulation	±5% (Typical)
Ripple & Noise	2% Vp-p Max. for Output Voltage @ Full Load
Transient Response	0.5mS for 50% Load Change Typical
Hold-up Time	10mS @ Full Load
Protection	Short Circuit Protection / Over Voltage Protection / Over Current Protection

Electrical

Topology	Switching Flyback
Dielectric Withstand	4000VAC Primary - Secondary
Touch Current	< 100µA
Efficiency	Meet DoE Level VI, ErP Stage 2, CoC Tier 2
EMC Standards	EN55011
	EN61000-3-2,3
	EN61000-4-2,3,4,5,6,8,11
MTBF	300,000 Calculated Hours at 25°C , by Telcordia SR-332

Environmental

Operating Temperature	-20 to + 40°C
Storage Temperature	-20 to + 80°C
Relative Humidity	Operating : 20 to 80% RH
	Storage : 10 to 90% RH
Cooling	Natural Convection Cooling

Mechanical

Case Dimension	U - L 80.2 × W 46 × H 57.5(mm)
	E - L 80.2 × W 46 × H 68.7(mm)
	B - L 80.2 × W 49.6 × H 62.7(mm)
	V - L 80.2 × W 46 × H 40.5(mm)
Weight	U : 140g E : 145g B : 148g
	V : 140g(Ref.)



36 Watt Series

Desktop Type

ATM036T - □ X X X

P : C14 ← → O / P Voltage
 A : C8 / C18



Features :

- IEC/EN/ANSI/AAMI ES60601-1 (Edition 3.1)
- EMC : IEC60601-1-2 : 2014 (Edition 4.0)
- Means of Protection: 2 X MOPP
- Touch Current: < 100µA
- 100-240VAC Universal Input
- Regulated Output With Low Ripple Noise
- Safety Agency Requirements and EMI/EMS Certified
- Modified and Custom Design Available
- 2 Years Warranty

Model	O/P Voltage	O/P Current	Watt
ATM036T-□050	5.0V	5.0A	25W
ATM036T-□075	7.5V	4.0A	30W
ATM036T-□090	9.0V	4.0A	36W
ATM036T-□120	12.0V	3.0A	36W
ATM036T-□150	15.0V	2.4A	36W
ATM036T-□180	18.0V	2.0A	36W
ATM036T-□240	24.0V	1.5A	36W

Input	
Voltage	100-240VAC
Line Frequency	50-60Hz
Current	1.0A-0.45A
Protection	Internal Primary Current Fuse
Configuration	IEC60320/C8, C14, C18

Output	
Load Regulation	±5% (Typical)
Ripple & Noise	2% Vp-p Max. for Output Voltage @ Full Load
Transient Response	0.5mS for 50% Load Change Typical
Hold-up Time	10mS @ Full Load
Protection	Short Circuit Protection / Over Voltage Protection / Over Current Protection

Electrical	
Topology	Switching Flyback
Dielectric Withstand	4000VAC Primary - Secondary
Touch Current	< 100µA
Efficiency	Meet DoE Level VI, ErP Stage 2
EMC Standards	EN55011
	EN61000-3-2,3
	EN61000-4-2,3,4,5,6,8,11
MTBF	300,000 Calculated Hours at 25°C , by Telcordia SR-332

Environmental	
Operating Temperature	-20 to + 40°C
Storage Temperature	-20 to + 80°C
Relative Humidity	Operating : 20 to 80% RH
	Storage : 10 to 90% RH
Cooling	Natural Convection Cooling

Mechanical	
Case Dimension	C14 & C18 - L100 × W50 × H33(mm)
	C8 - L99 × W50 × H33(mm)
Weight	210g (Ref.)



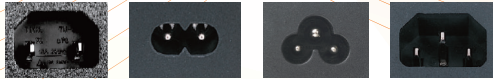
65 Watt Series

Desktop Type

ATM065T - □ X X X

P : C6 / C14
A : C8 / C18

O / P Voltage



Features :

- IEC/EN/ANSI/AAMI ES60601-1 (Edition 3.1)
- EMC : IEC60601-1-2 : 2014 (Edition 4.0)
- Means of Protection: 2 X MOPP
- Touch Current : < 100µA
- 100-240VAC Universal Input
- Regulated Output With Low Ripple Noise
- Safety Agency Requirements and EMI/EMS Certified
- Modified and Custom Design Available
- 2 Years Warranty

Model	O/P Voltage	O/P Current	Watt
ATM065T-□120	12.0V	5.00A	60W
ATM065T-□150	15.0V	4.34A	65W
ATM065T-□180	18.0V	3.62A	65W
ATM065T-□190	19.0V	3.43A	65W
ATM065T-□240	24.0V	2.71A	65W
ATM065T-□300	30.0V	2.17A	65W
ATM065T-□360	36.0V	1.81A	65W
ATM065T-□480	48.0V	1.36A	65W

Input

Voltage	100-240VAC
Line Frequency	50-60Hz
Current	1.6A-0.7A
Protection	Internal Primary Current Fuse
Configuration	IEC60320/C6, C8, C14, C18

Output

Load Regulation	±5% (Typical)
Ripple & Noise	1% Vp-p Max. for Output Voltage @ Full Load
Transient Response	0.5mS for 50% Load Change Typical
Hold-up Time	10mS @ Full Load
Protection	Short Circuit Protection / Over Voltage Protection / Over Current Protection

Electrical

Topology	Switching Flyback
Dielectric Withstand	4000VAC Primary - Secondary
Touch Current	< 100µA
Efficiency	Meet DoE Level VI, ErP Stage 2
EMC Standards	EN55011
	EN61000-3-2,3
	EN61000-4-2,3,4,5,6,8,11
MTBF	300,000 Calculated Hours at 25°C , by Telcordia SR-332

Environmental

Operating Temperature	-20 to + 40°C
Storage Temperature	-20 to + 80°C
Relative Humidity	Operating : 20 to 80% RH
	Storage : 10 to 90% RH
Cooling	Natural Convection Cooling

Mechanical

Case Dimension	L 119 × W 60 × H 36 (mm)
Weight	310g (Ref.)



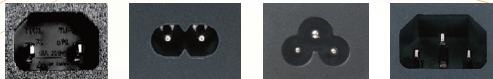
90 Watt Series

Desktop Type

ATM090T - □ X X X

P : C6 / C14
A : C8 / C18

O / P Voltage



Features :

- IEC/EN/ANSI/AAMI ES60601-1 (Edition 3.1)
- EMC : IEC60601-1-2 : 2014 (Edition 4.0)
- Means of Protection: 2 X MOPP
- Touch Current : < 100µA
- 100-240VAC Universal Input
- Regulated Output With Low Ripple Noise
- Safety Agency Requirements and EMI/EMS Certified
- Modified and Custom Design Available
- 2 Years Warranty

Model	O/P Voltage	O/P Current	Watt
ATM090T-□120	12.0V	7.00A	84W
ATM090T-□150	15.0V	6.00A	90W
ATM090T-□180	18.0V	5.00A	90W
ATM090T-□190	19.0V	4.74A	90W
ATM090T-□240	24.0V	3.75A	90W
ATM090T-□480	48.0V	1.88A	90W

Input	
Voltage	100-240VAC
Line Frequency	50-60Hz
Current	1.2A-0.5A
Protection	Internal Primary Current Fuse
Configuration	IEC60320/C6,C8,C14, C18

Output	
Load Regulation	±5% (Typical)
Ripple & Noise	1% Vp-p Max. for Output Voltage @ Full Load
Transient Response	0.5mS for 50% Load Change Typical
Hold-up Time	10mS @ Full Load
Protection	Short Circuit Protection / Over Voltage Protection / Over Current Protection / Over Temperature Protection

Electrical	
Topology	Switching Flyback
Dielectric Withstand	4000VAC Primary - Secondary
Touch Current	< 100µA
Efficiency	Meet DoE Level VI, ErP Stage 2
EMC Standards	EN55011
	EN61000-3-2,3
	EN61000-4-2,3,4,5,6,8,11
MTBF	300,000 Calculated Hours at 25°C , by Telcordia SR-332

Environmental	
Operating Temperature	-20 to + 40°C
Storage Temperature	-20 to + 80°C
Relative Humidity	Operating : 20 to 80% RH
	Storage : 10 to 90% RH
Cooling	Natural Convection Cooling

Mechanical	
Case Dimension	C14 & C18 : L160 × W64 × H35 (mm)
	C6 & C8 : L151 × W64 × H35 (mm)
Weight	460g (Ref.)

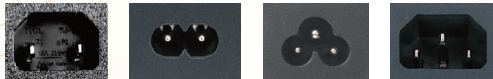


120 Watt Series

Desktop Type

ATM120T - □ X X X

P : C6 / C14 ← O / P Voltage
A : C8 / C18



Features :

- IEC/EN/ANSI/AAMI ES60601-1 (Edition 3.1)
- EMC : IEC60601-1-2 : 2014 (Edition 4.0)
- Means of Protection: 2 X MOPP
- Touch Current : < 100µA
- 100-240VAC Universal Input
- Regulated Output With Low Ripple Noise
- Safety Agency Requirements and EMI/EMS Certified
- Modified and Custom Design Available
- 2 Years Warranty

Model	O/P Voltage	O/P Current	Watt
ATM120T-□120	12.0V	9.00A	108W
ATM120T-□150	15.0V	8.00A	120W
ATM120T-□180	18.0V	6.67A	120W
ATM120T-□190	19.0V	6.32A	120W
ATM120T-□200	20.0V	6.00A	120W
ATM120T-□240	24.0V	5.00A	120W
ATM120T-□480	48.0V	2.50A	120W

Input	
Voltage	100-240VAC
Line Frequency	50-60Hz
Current	1.5A-0.7A
Protection	Internal Primary Current Fuse
Configuration	IEC60320/C6, C8, C14, C18

Output	
Load Regulation	±5% (Typical)
Ripple & Noise	1% Vp-p Max. for Output Voltage @ Full Load
Transient Response	0.5mS for 50% Load Change Typical
Hold-up Time	10mS @ Full Load
Protection	Short Circuit Protection / Over Voltage Protection / Over Current Protection / Over Temperature Protection

Electrical	
Topology	Switching Flyback
Dielectric Withstand	4000VAC Primary - Secondary
Touch Current	< 100µA
Efficiency	Meet DoE Level VI, ErP Stage 2
EMC Standards	EN55011
	EN61000-3-2,3
	EN61000-4-2,3,4,5,6,8,11
MTBF	300,000 Calculated Hours at 25°C, by Telcordia SR-332

Environmental	
Operating Temperature	-20 to + 40°C
Storage Temperature	-20 to + 80°C
Relative Humidity	Operating : 20 to 80% RH
	Storage : 10 to 90% RH
Cooling	Natural Convection Cooling

Mechanical	
Case Dimension	L 168 × W 66 × H 39 (mm)
Weight	560g (Ref.)

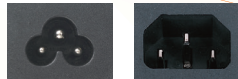


160 Watt Series

Desktop Type

ATM160T - P X X X

P : C6 / C14 ← → O / P Voltage



Features :

- IEC/EN/ANSI/AAMI ES60601-1 (Edition 3.1)
- EMC : IEC60601-1-2 : 2014 (Edition 4.0)
- Means of Protection: 2 X MOPP
- Touch Current : < 100µA
- 100-240VAC Universal Input
- Regulated Output With Low Ripple Noise
- Safety Agency Requirements and EMI/EMS Certified
- Modified and Custom Design Available
- 2 Years Warranty

Model	O/P Voltage	O/P Current	Watt
ATM160T-P120	12.0V	12.5A	150W
ATM160T-P190	19.0V	8.4A	160W
ATM160T-P240	24.0V	6.6A	160W
ATM160T-P480	48.0V	3.3A	160W

Input	
Voltage	100-240VAC
Line Frequency	50-60Hz
Current	1.8A-0.9A
Protection	Internal Primary Current Fuse
Configuration	IEC60320/C6, C14

Output	
Load Regulation	±5% (Typical)
Ripple & Noise	1% Vp-p Max. for Output Voltage@ Full Load
Transient Response	0.5mS for 50% Load Change Typical
Hold-up Time	10mS @ Full Load
Protection	Short Circuit Protection / Over Voltage Protection / Over Current Protection / Over Temperature Protection

Electrical	
Topology	LLC
Dielectric Withstand	4000VAC Primary - Secondary
Touch Current	< 100µA
Efficiency	Meet DoE Level VI, ErP Stage 2
EMC Standards	EN55011
	EN61000-3-2,3
	EN61000-4-2,3,4,5,6,8,11
MTBF	300,000 Calculated Hours at 25°C , by Telcordia SR-332

Environmental	
Operating Temperature	-20 to + 40°C
Storage Temperature	-20 to + 80°C
Relative Humidity	Operating : 20 to 80% RH
	Storage : 10 to 90% RH
Cooling	Natural Convection Cooling

Mechanical	
Case Dimension	L 183 × W 81 × H 42 (mm)
Weight	820g (Ref.)



200 Watt Series

Desktop Type

ATM200T - □ X X X

P: C14 ← O / P Voltage
A: C8 / C18



Features :

- IEC/EN/ANSI/AAMI ES60601-1 (Edition 3.1)
- EMC : IEC60601-1-2 : 2014 (Edition 4.0)
- Means of Protection: 2 X MOPP
- Touch Current : < 100µA
- 100-240VAC Universal Input
- Regulated Output With Low Ripple Noise
- Safety Agency Requirements and EMI/EMS Certified
- Modified and Custom Design Available
- 2 Years Warranty

Model	O/P Voltage	O/P Current	Watt
ATM200T-□120	12.0V	16.00A	192W
ATM200T-A150	15.0V	13.00A	195W
ATM200T-□180	18.0V	11.00A	198W
ATM200T-□190	19.0V	10.50A	200W
ATM200T-□240	24.0V	8.30A	200W
ATM200T-□480	48.0V	4.17A	200W

Input	
Voltage	100-240VAC
Line Frequency	50-60Hz
Current	2.4A-1.0A
Protection	Internal Primary Current Fuse
Configuration	IEC60320/C8, C14, C18

Output	
Load Regulation	±5% (Typical)
Ripple & Noise	1% Vp-p Max. for Output Voltage@ Full Load
Transient Response	0.5mS for 50% Load Change Typical
Hold-up Time	10mS @ Full Load
Protection	Short Circuit Protection / Over Voltage Protection / Over Current Protection / Over Temperature Protection

Electrical	
Topology	LLC
Dielectric Withstand	4000VAC Primary - Secondary
Touch Current	< 100µA
Efficiency	Meet DoE Level VI, ErP Stage 2
EMC Standards	EN55011
	EN61000-3-2,3
	EN61000-4-2,3,4,5,6,8,11
MTBF	300,000 Calculated Hours at 25°C , by Telcordia SR-332

Environmental	
Operating Temperature	-20 to + 40°C
Storage Temperature	-20 to + 80°C
Relative Humidity	Operating : 20 to 80% RH
	Storage : 10 to 90% RH
Cooling	Natural Convection Cooling

Mechanical	
Case Dimension	L 204 × W 81 × H 42.5 (mm)
Weight	880g (Ref.)



250 Watt Series

Desktop Type

ATM250T - □ X X X

P : C14 ← O / P Voltage
A : C18

Features :

- IEC/EN/ANSI/AAMI ES60601-1 (Edition 3.1)
- EMC : IEC60601-1-2 : 2014 (Edition 4.0)
- Means of Protection: 2 X MOPP
- Touch Current : < 100µA
- 100-240VAC Universal Input
- Regulated Output With Low Ripple Noise
- Safety Agency Requirements and EMI/EMS Certified
- Modified and Custom Design Available
- 2 Years Warranty

Model	O/P Voltage	O/P Current	Watt
ATM250T-□120	12.0V	20.00A	240W
ATM250T-□150	15.0V	16.66A	250W
ATM250T-□190	19.0V	13.15A	250W
ATM250T-□240	24.0V	10.40A	250W
ATM250T-□480	48.0V	5.21A	250W

Input	
Voltage	100-240VAC
Line Frequency	50-60Hz
Current	3.3A-1.3A
Protection	Internal Primary Current Fuse
Configuration	IEC60320/C14,C18

Output	
Load Regulation	±5% (Typical)
Ripple & Noise	1% Vp-p Max. for Output Voltage@ Full Load
Transient Response	0.5mS for 50% Load Change Typical
Hold-up Time	10mS @ Full Load
Protection	Short Circuit Protection / Over Voltage Protection / Over Current Protection / Over Temperature Protection

Electrical	
Topology	LLC
Dielectric Withstand	4000VAC Primary - Secondary
Touch Current	< 100µA
Efficiency	Meet DoE Level VI, ErP Stage 2
EMC Standards	EN55011
	EN61000-3-2,3
	EN61000-4-2,3,4,5,6,8,11
MTBF	300,000 Calculated Hours at 25°C , by Telcordia SR-332

Environmental	
Operating Temperature	-20 to + 40°C
Storage Temperature	-20 to + 80°C
Relative Humidity	Operating : 20 to 80% RH
	Storage : 10 to 90% RH
Cooling	Natural Convection Cooling

Mechanical	
Case Dimension	L 204 × W 94 × H 43.5 (mm)
Weight	1145g (Ref.)



300 Watt Series

Desktop Type

ATM300T - □ X X X

P : C14 ← O / P Voltage
A : C18 →



Features :

- IEC/EN/ANSI/AAMI ES60601-1 (Edition 3.1)
- EMC : IEC60601-1-2 : 2014 (Edition 4.0)
- Means of Protection: 2 X MOPP
- Touch Current : < 100µA
- 100-240VAC Universal Input
- Regulated Output With Low Ripple Noise
- Safety Agency Requirements and EMI/EMS Certified
- Modified and Custom Design Available
- 2 Years Warranty

Model	O/P Voltage	O/P Current	Watt
ATM300T-□120	12.0V	25.00A	300W
ATM300T-□150	15.0V	20.00A	300W
ATM300T-□240	24.0V	12.50A	300W
ATM300T-□480	48.0V	6.25A	300W

Input	
Voltage	100-240VAC
Line Frequency	50-60Hz
Current	3.5A-1.5A
Protection	Internal Primary Current Fuse
Configuration	IEC60320/C14,C18

Output	
Load Regulation	±5% (Typical)
Ripple & Noise	1% Vp-p Max. for Output Voltage@ Full Load
Transient Response	0.5mS for 50% Load Change Typical
Hold-up Time	10mS @ Full Load
Protection	Short Circuit Protection / Over Voltage Protection / Over Current Protection / Over Temperature Protection

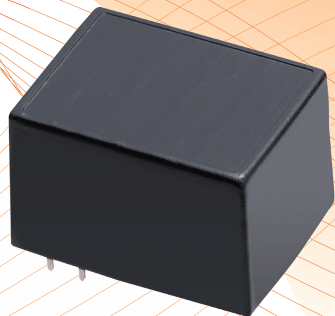
Electrical	
Topology	LLC
Dielectric Withstand	4000VAC Primary - Secondary
Touch Current	< 100µA
Efficiency	Meet DoE Level VI
EMC Standards	EN55011
	EN61000-3-2,3
	EN61000-4-2,3,4,5,6,8,11
MTBF	300,000 Calculated Hours at 25°C , by Telcordia SR-332

Environmental	
Operating Temperature	-20 to + 40°C
Storage Temperature	-20 to + 80°C
Relative Humidity	Operating : 20 to 80% RH
	Storage : 10 to 90% RH
Cooling	Natural Convection Cooling

Mechanical	
Case Dimension	L 254 × W 116 × H 47 (mm)
Weight	1600g (Ref.)

NEW

I.T.E.



5 Watt Power Module Series

ATS005A2 - F X X X P

O / P Voltage ←

- Features :**
- IEC/UL 62368-1 3rd Edition
 - 100-240VAC Universal Input
 - Regulated Output With Low Ripple Noise
 - Safety Agency Requirements and EMI/EMS Certified
 - Modified and Custom Design Available
 - 1 Year Warranty

Model	O/P Voltage	O/P Current	Watt
ATS005A2-F033P	3.3V	1.25A	4.125W
ATS005A2-F050P	5.0V	1.00A	5.000W
ATS005A2-F120P	12.0V	0.42A	5.040W
ATS005A2-F150P	15.0V	0.33A	4.950W
ATS005A2-F240P	24.0V	0.23A	5.520W

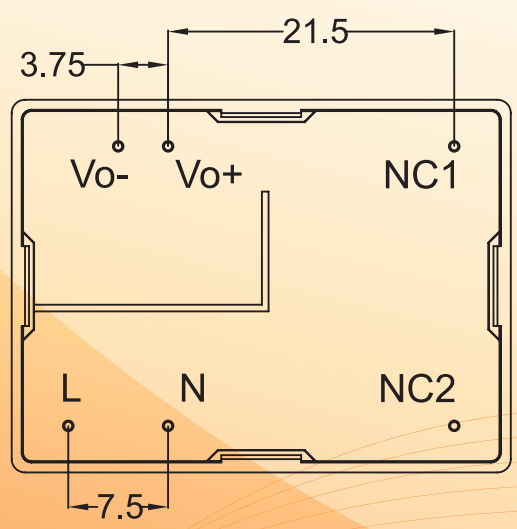
Input	
Voltage	100-240VAC
Line Frequency	50-60Hz
Current	0.19A Max.
Protection	Internal Primary Current Fuse

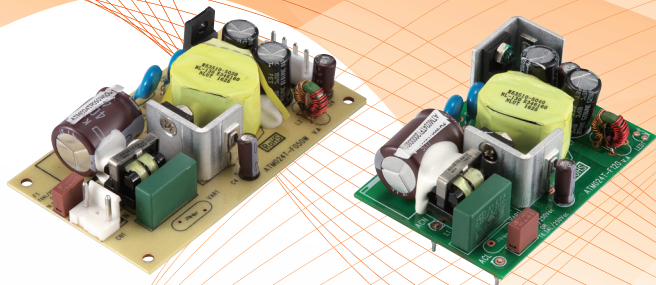
Output	
Load Regulation	±5% (Typical)
Ripple & Noise	1% Vp-p Max. for Output Voltage@ Full Load
Transient Response	0.5mS for 50% Load Change Typical
Hold-up Time	8mS @ Full Load
Protection	Short Circuit Protection / Over Voltage Protection / Over Current Protection

Electrical	
Topology	Switching Flyback
Dielectric Withstand	3000VAC Primary - Secondary
Leakage Current	0.25mA
Efficiency	DoE Level VI, ErP Stage 2
EMC Standards	EN55032
	EN61000-3-2,3
	EN55035
MTBF	300,000 Calculated Hours at 25°C, by Telcordia SR-332

Environmental	
Operating Temperature	-20 to + 50°C
Storage Temperature	-20 to + 80°C
Relative Humidity	Operating : 20 to 80% RH
	Storage : 10 to 90% RH
Cooling	Natural Convection Cooling

Mechanical	
Case Dimension	L 37.5 x W 28 x H 21 (mm)
Weight	20g (Ref.)





Open Frame Power Supply 12 / 24 Watt Series

ATM012T - F X X X

→ O / P Voltage

ATM024T - F X X X □

O / P Voltage ←

→ W : Wafer
Blank : 4 Industrial Pins

Features :

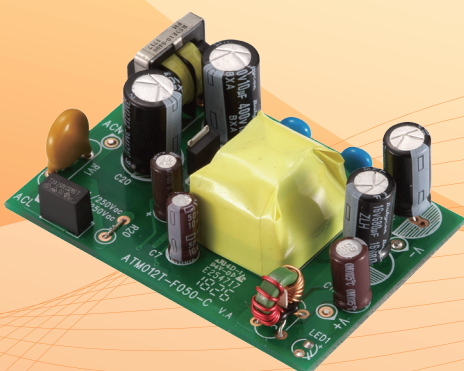
- IEC/EN/ANSI/AAMI ES60601-1 (Edition 3.1)
- EMC : IEC60601-1-2 : 2014 (Edition 4.0)
- Means of Protection: 2 X MOPP
- Touch Current : < 100µA
- IEC 62368-1
- 100-240VAC Universal Input
- Regulated Output With Low Ripple Noise
- Modified and Custom Design Available
- 2 Years Warranty

Model	O/P Voltage	O/P Current	Watt
ATM012T-F033	3.3V	2.5A	8.25W
ATM012T-F050	5.0V	2.0A	10.00W
ATM012T-F120	12.0V	1.0A	12.00W
ATM012T-F150	15.0V	0.8A	12.00W
ATM012T-F240	24.0V	0.5A	12.00W

Model	O/P Voltage	O/P Current	Watt
ATM024T-F033□	3.3V	4.5A	14.85W
ATM024T-F050□	5.0V	4.4A	22.00W
ATM024T-F120□	12.0V	2.0A	24.00W
ATM024T-F150□	15.0V	1.6A	24.00W
ATM024T-F240□	24.0V	1.0A	24.00W
ATM024T-F480□	48.0V	0.5A	24.00W

Input

Voltage	100-240 VAC
Line Frequency	50-60Hz
Current	12W : 0.29A-0.17A 24W : 0.58A-0.32A
Protection	Internal Primary Current Fuse



Output

Load Regulation	± 5% (Typical)
Ripple & Noise	2% Vp-p Max. for Output Voltage @ Full Load
Transient Response	0.5mS for 50% Load Change Typical
Hold-up Time	10mS @Full Load
Protection	Short Circuit Protection/ Over Voltage Protection/ Over Current Protection

Electrical

Topology	Switching Flyback
Dielectric Withstand	4,000VAC Primary - Secondary
Touch Current	< 100µA
Efficiency	Meet DoE Level VI, ErP Stage 2
MTBF	300,000 Calculated Hours at 25°C, by Telcordia SR-332

Environmental

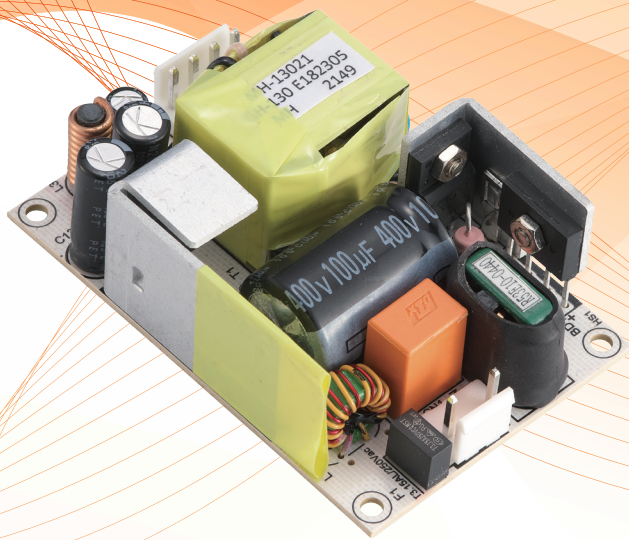
Operating Temperature	-20 to + 50°C
Storage Temperature	-20 to + 80°C
Relative Humidity	Operating: 20 to 80% RH Storage: 10 to 90% RH
Cooling	Natural Convection Cooling

Mechanical

Dimension	ATM012T-F: L65 x W45 x H24 (mm) 2.56"x1.77"x0.95"
	ATM024T-F: L70 x W48 x H26 (mm) 2.75"x1.89"x0.95"
	ATM024T-F: L89 x W51 x H24 (mm) (wafer) 3.5"x2"x0.95"
	Weight
	ATM012T-F: 42g (Ref.) ATM024T-F: 58g (Ref.)

NEW

I.T.E.



Open Frame Power Supply 65 Watt Small Size Series

ATS065A1-F X X X



Features :

- IEC/UL 62368-1 3rd Edition
- Meet IEC 60335-1
- 100-240VAC Universal Input
- Regulated Output With Low Ripple Noise
- Modified and Custom Design Available
- 1 Year Warranty

Model	O/P Voltage	O/P Current	Watt
ATS065A1-F050	5.0V	10.00A	50W
ATS065A1-F090	9.0V	7.20A	65W
ATS065A1-F120	12.0V	5.42A	65W
ATS065A1-F150	15.0V	4.34A	65W
ATS065A1-F190	19.0V	3.43A	65W
ATS065A1-F240	24.0V	2.71A	65W
ATS065A1-F480	48.0V	1.36A	65W

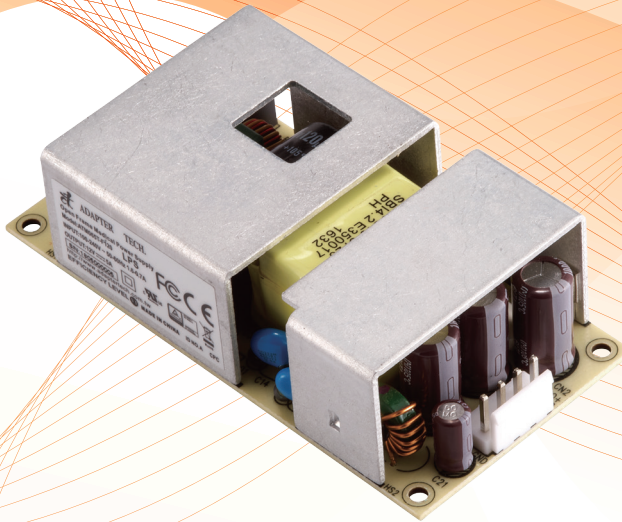
Input	
Voltage	100-240VAC
Line Frequency	50-60Hz
Current	1.6A Max.
Protection	Internal Primary Current Fuse

Output	
Load Regulation	±5% (Typical)
Ripple & Noise	1% Vp-p Max. for Output Voltage@ Full Load
Transient Response	0.5mS for 50% Load Change Typical
Hold-up Time	10mS @ Full Load
Protection	Short Circuit Protection / Over Voltage Protection / Over Current Protection

Electrical	
Topology	Switching Flyback
Dielectric Withstand	3000VAC Primary - Secondary
Leakage Current	0.25mA
Efficiency	Meet DoE Level VI, ErP Stage 2
MTBF	300,000 Calculated Hours at 25°C , by Telcordia SR-332

Environmental	
Operating Temperature	-20 to + 50°C
Storage Temperature	-20 to + 80°C
Relative Humidity	Operating : 20 to 80% RH Storage : 10 to 90% RH
Cooling	Natural Convection Cooling

Mechanical	
Dimension	L 76 × W 51 × H 27 (mm) 3" x 2" x 1.1"
Weight	100g (Ref.)



Open Frame Power Supply 65 Watt Series

ATM065T-F X X X

→ O / P Voltage

Features :

- IEC/EN/ANSI/AAMI ES60601-1 (Edition 3.1)
- EMC : IEC60601-1-2 : 2014 (Edition 4.0)
- Means of Protection: 2 X MOPP
- Touch Current : < 100µA
- IEC/UL 62368-1
- 100-240VAC Universal Input
- Regulated Output With Low Ripple Noise
- Modified and Custom Design Available
- 2 Years Warranty

Model	O/P Voltage	O/P Current	Watt
ATM065T-F120	12.0V	5.00A	60W
ATM065T-F150	15.0V	4.34A	65W
ATM065T-F180	18.0V	3.62A	65W
ATM065T-F190	19.0V	3.43A	65W
ATM065T-F240	24.0V	2.71A	65W
ATM065T-F480	48.0V	1.36A	65W

Input

Voltage	100-240VAC
Line Frequency	50-60Hz
Current	1.6A-0.7A
Protection	Internal Primary Current Fuse

Output

Load Regulation	±5% (Typical)
Ripple & Noise	1% Vp-p Max. for Output Voltage@ Full Load
Transient Response	0.5mS for 50% Load Change Typical
Hold-up Time	10mS @ Full Load
Protection	Short Circuit Protection / Over Voltage Protection / Over Current Protection

Electrical

Topology	Switching Flyback
Dielectric Withstand	4000VAC Primary - Secondary
Touch Current	< 100µA
Efficiency	Meet DoE Level VI, ErP Stage 2
MTBF	300,000 Calculated Hours at 25°C , by Telcordia SR-332

Environmental

Operating Temperature	-20 to + 50°C
Storage Temperature	-20 to + 80°C
Relative Humidity	Operating : 20 to 80% RH Storage : 10 to 90% RH
Cooling	Natural Convection Cooling

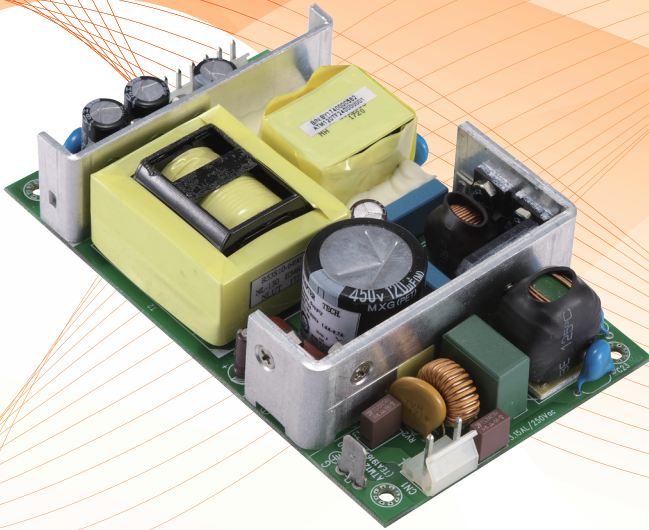
Mechanical

Dimension	L 102 × W 51 × H 31 (mm) 4" x 2" x 1.2"
Weight	141g (Ref.)

Open Frame Power Supply 120 Watt Series

ATM120T-F X X X

→ O / P Voltage



Features :

- IEC/EN/ANSI/AAMI ES60601-1 (Edition 3.1)
- Means of Protection: 2 X MOPP
- Touch Current : < 100µA
- IEC/UL 60950-1
- 100-240VAC Universal Input
- Regulated Output With Low Ripple Noise
- Modified and Custom Design Available
- 2 Years Warranty

Output

Load Regulation	±5% (Typical)
Ripple & Noise	1% Vp-p Max. for Output Voltage@ Full Load
Transient Response	0.5mS for 50% Load Change Typical
Hold-up Time	10mS @ Full Load
Protection	Short Circuit Protection / Over Voltage Protection / Over Current Protection / Over Temperature Protection

Model	O/P Voltage	O/P Current	Watt
ATM120T-F120	12.0V	10.0A	120W
ATM120T-F150	15.0V	8.0A	120W
ATM120T-F190	19.0V	6.3A	120W
ATM120T-F240	24.0V	5.0A	120W
ATM120T-F300	30.0V	4.0A	120W
ATM120T-F480	48.0V	2.5A	120W

Input

Voltage	100-240VAC
Line Frequency	50-60Hz
Current	1.5A-0.7A
Protection	Internal Primary Current Fuse

Electrical

Topology	LLC
Dielectric Withstand	4000VAC Primary - Secondary
Touch Current	< 100µA
Efficiency	Meet DoE Level VI, ErP Stage 2
MTBF	300,000 Calculated Hours at 25°C , by Telcordia SR-332

Environmental

Operating Temperature	-20 to + 50°C
Storage Temperature	-20 to + 80°C
Relative Humidity	Operating : 20 to 80% RH Storage : 10 to 90% RH
Cooling	Natural Convection Cooling

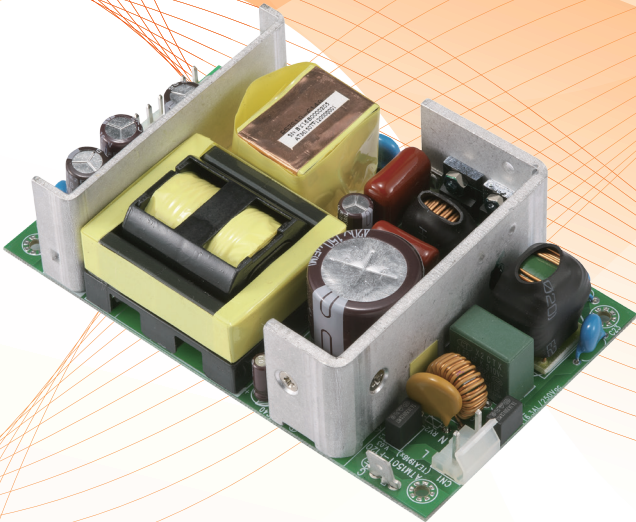
Mechanical

Dimension	L 127 × W 76 × H 31 (mm) 5" x 3" x 1.2"
Weight	300g (Ref.)

Open Frame Power Supply 150 Watt Series

ATM150T-F X X X

→ O / P Voltage



Features :

- IEC/EN/ANSI/AAMI ES60601-1 (Edition 3.1)
- Means of Protection: 2 X MOPP
- Touch Current : < 100µA
- IEC 60950-1
- 100-240VAC Universal Input
- Regulated Output With Low Ripple Noise
- Modified and Custom Design Available
- 2 Years Warranty

Model	O/P Voltage	O/P Current	Watt
ATM150T-F120	12.0V	12.50A	150W
ATM150T-F240	24.0V	6.25A	150W
ATM150T-F300	30.0V	5.00A	150W
ATM150T-F480	48.0V	3.12A	150W

Input

Voltage	100-240VAC
Line Frequency	50-60Hz
Current	1.7A-0.8A
Protection	Internal Primary Current Fuse

Output

Load Regulation	±5% (Typical)
Ripple & Noise	1% Vp-p Max. for Output Voltage@ Full Load
Transient Response	0.5mS for 50% Load Change Typical
Hold-up Time	10mS @ Full Load
Protection	Short Circuit Protection / Over Voltage Protection / Over Current Protection / Over Temperature Protection

Electrical

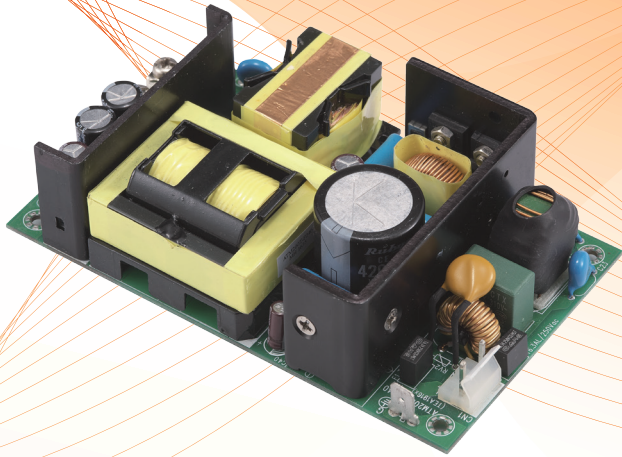
Topology	LLC
Dielectric Withstand	4000VAC Primary - Secondary
Touch Current	< 100µA
Efficiency	Meet DoE Level VI, ErP Stage 2
MTBF	300,000 Calculated Hours at 25°C , by Telcordia SR-332

Environmental

Operating Temperature	-20 to + 50°C
Storage Temperature	-20 to + 80°C
Relative Humidity	Operating : 20 to 80% RH Storage : 10 to 90% RH
Cooling	Natural Convection Cooling

Mechanical

Dimension	L 127 × W 76 × H 38 (mm) 5" x 3" x 1.5"
Weight	320g (Ref.)



Open Frame Power Supply 200 Watt Series

ATM200T-F X X X

→ O / P Voltage

Features :

- IEC/EN/ANSI/AAMI ES60601-1 (Edition 3.1)
- Means of Protection: 2 X MOPP
- Touch Current : < 100 μ A
- IEC 62368-1
- 100-240VAC Universal Input
- Regulated Output With Low Ripple Noise
- Modified and Custom Design Available
- 2 Years Warranty

Model	O/P Voltage	O/P Current	Watt
ATM200T-F120	12.0V	16.0A	192W
ATM200T-F190	19.0V	10.5A	200W
ATM200T-F240	24.0V	8.3A	200W
ATM200T-F360	36.0V	5.5A	200W
ATM200T-F480	48.0V	4.2A	200W

Input

Voltage	100-240VAC
Line Frequency	50-60Hz
Current	2.5A-0.9A
Protection	Internal Primary Current Fuse

Output

Load Regulation	$\pm 5\%$ (Typical)
Ripple & Noise	1% Vp-p Max. for Output Voltage@ Full Load
Transient Response	0.5mS for 50% Load Change Typical
Hold-up Time	10mS @ Full Load
Protection	Short Circuit Protection / Over Voltage Protection / Over Current Protection / Over Temperature Protection

Electrical

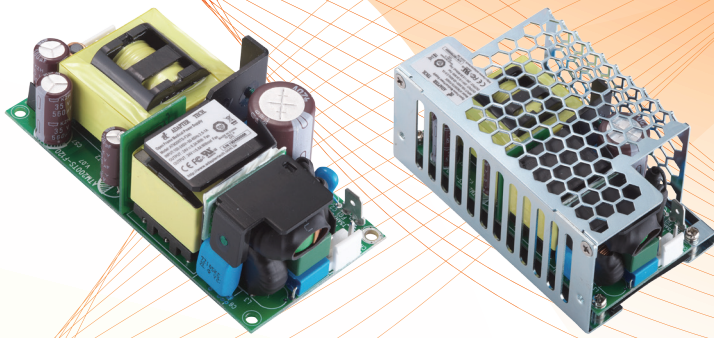
Topology	LLC
Dielectric Withstand	4000VAC Primary - Secondary
Touch Current	< 100 μ A
Efficiency	Meet DoE Level VI, ErP Stage 2
MTBF	300,000 Calculated Hours at 25 $^{\circ}$ C , by Telcordia SR-332

Environmental

Operating Temperature	-20 to + 50 $^{\circ}$ C
Storage Temperature	-20 to + 80 $^{\circ}$ C
Relative Humidity	Operating : 20 to 80% RH Storage : 10 to 90% RH
Cooling	Natural Convection Cooling

Mechanical

Dimension	L 127 \times W 76 \times H 38 (mm) 5" \times 3" \times 1.5"
Weight	360g (Ref.)



Open Frame Power Supply 200 Watt Small Size Series

ATM200TS-F X X X □

O / P Voltage ←

Blank: Open Frame
X: Enclosed Type

Features :

- IEC/EN/ANSI/AAMI ES60601-1 (Edition 3.1)
- Means of Protection : 2 X MOPP
- Touch Current : < 100µA
- IEC/EN/UL 62368-1
- 100-240VAC Universal Input
- 200W With Fan
- Regulated Output With Low Ripple Noise
- Modified and Custom Design Available
- 2 Years Warranty

Model	O/P Voltage	O/P Current		Watt	
		Convection	With Fan*	Convection	With Fan*
ATM200TS-F120□	12.0V	11.6A	16.0A	140W	192W
ATM200TS-F150□	15.0V	9.3A	13.0A	140W	195W
ATM200TS-F240□	24.0V	5.8A	8.3A	140W	200W
ATM200TS-F360□	36.0V	3.9A	5.5A	140W	200W
ATM200TS-F480□	48.0V	2.9A	4.2A	140W	200W

*With 12 CFM Fan

Input

Voltage	100-240VAC
Line Frequency	50-60Hz
Current	2.5A-1A
Protection	Internal Primary Current Fuse

Output

Load Regulation	±5% (Typical)
Ripple & Noise	2% Vp-p Max. for Output Voltage@ Full Load
Transient Response	0.5mS for 50% Load Change Typical
Hold-up Time	10mS @ Full Load
Protection	Short Circuit Protection / Over Voltage Protection / Over Current Protection / Over Temperature Protection

Electrical

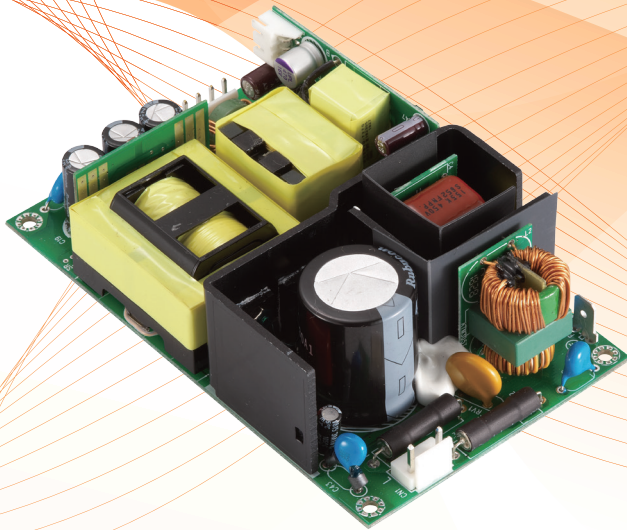
Topology	LLC
Dielectric Withstand	4000VAC Primary - Secondary
Touch Current	< 100µA
Efficiency	Meet DoE Level VI, ErP Stage 2
MTBF	300,000 Calculated Hours at 25°C , by Telcordia SR-332

Environmental

Operating Temperature	-20 to + 50°C
Storage Temperature	-20 to + 80°C
Relative Humidity	Operating : 20 to 80% RH Storage : 10 to 90% RH
Cooling	140W With convection cooling 200W With fan cooling

Mechanical

Dimension	Open Type : L 101.6 × W 50.8 × H 36 (mm) 4" x 2" x 1.4"
	Enclosed Type : L 103.4 × W 62 × H 42.9 (mm) 4.1" x 2.4" x 1.7"
Weight	Open Type : 284g (Ref.)
	Enclosed Type : 306g (Ref.)



Open Frame Dual Output 210 Watt Series

ATM210T-F X X X

→ O / P Voltage

Features :

- IEC/ANSI/AAMI ES60601-1 (Edition 3.1)
- Means of Protection : 2 X MOPP
- Touch Current : < 100µA
- IEC 60950-1
- 100-240VAC Universal Input
- 210W With Fan
- Standby 5V / 2A
- On & Off Remote Control
- Regulated Output With Low Ripple Noise
- Modified and Custom Design Available
- 2 Years Warranty

Model	O/P Voltage	O/P Current		Watt	
		Convection	With Fan*	Convection	With Fan*
ATM210T-F120	12V	12.5A	16.7A	160W	210W
	5V	2.0A			
ATM210T-F240	24V	6.25A	8.3A	160W	210W
	5V	2.0A			

*With 11 CFM Fan

Input	
Voltage	100-240VAC
Line Frequency	50-60Hz
Current	2.5A-1A
Protection	Internal Primary Current Fuse

Output

Load Regulation	±5% (Typical)
Ripple & Noise	1% Vp-p Max. for Output Voltage@ Full Load
Transient Response	0.5mS for 50% Load Change Typical
Hold-up Time	10mS @ Full Load
Protection	Short Circuit Protection / Over Voltage Protection / Over Current Protection / Over Temperature Protection

Electrical

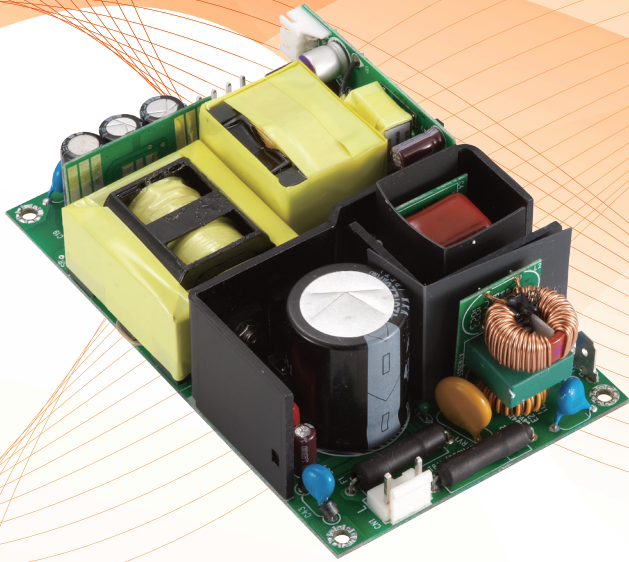
Topology	LLC
Dielectric Withstand	4000VAC Primary - Secondary
Touch Current	< 100µA
Efficiency	Meet DoE Level VI, ErP Stage 2
MTBF	300,000 Calculated Hours at 25°C , by Telcordia SR-332

Environmental

Operating Temperature	-20 to + 50°C
Storage Temperature	-20 to + 80°C
Relative Humidity	Operating : 20 to 80% RH Storage : 10 to 90% RH
Cooling	160W With convection cooling 210W With fan cooling

Mechanical

Dimension	L 127 × W 76 × H 38 (mm) 5" x 3" x 1.5"
Weight	310g (Ref.)



Open Frame Dual Output 305 Watt Series

ATM305T-F X X X

→ O / P Voltage

Features :

- IEC/ANSI/AAMI ES60601-1 (Edition 3.1)
- Means of Protection : 2 X MOPP
- Touch Current : < 100µA
- IEC/UL 62368-1
- 100-240VAC Universal Input
- 305W With Fan
- Standby 5V / 1A
- On & Off Remote Control
- Regulated Output With Low Ripple Noise
- Modified and Custom Design Available
- 2 Years Warranty

Model	O/P Voltage	O/P Current		Watt	
		Convection	With Fan*	Convection	With Fan*
ATM305T-F120	12V	16.0A	25.0A	197W	305W
	5V	1.0A			
ATM305T-F240	24V	10.4A	12.5A	255W	305W
	5V	1.0A			
ATM305T-F480	48V	5.2A	6.25A	255W	305W
	5V	1.0A			

*With 11 CFM Fan

Input

Voltage	100-240VAC
Line Frequency	50-60Hz
Current	3.6A-1.6A
Protection	Internal Primary Current Fuse

Output

Load Regulation	±5% (Typical)
Ripple & Noise	1% Vp-p Max. for Output Voltage@ Full Load
Transient Response	0.5mS for 50% Load Change Typical
Hold-up Time	10mS @ Full Load
Protection	Short Circuit Protection / Over Voltage Protection / Over Current Protection / Over Temperature Protection

Electrical

Topology	LLC
Dielectric Withstand	4000VAC Primary - Secondary
Touch Current	< 100µA
MTBF	300,000 Calculated Hours at 25°C , by Telcordia SR-332

Environmental

Operating Temperature	-20 to + 50°C
Storage Temperature	-20 to + 80°C
Relative Humidity	Operating : 20 to 80% RH Storage : 10 to 90% RH
Cooling	ATM305T-F120 : 197W With convection cooling ATM305T-F240 : 255W With convection cooling ATM305T-F480 : 255W With convection cooling 305W With fan cooling

Mechanical

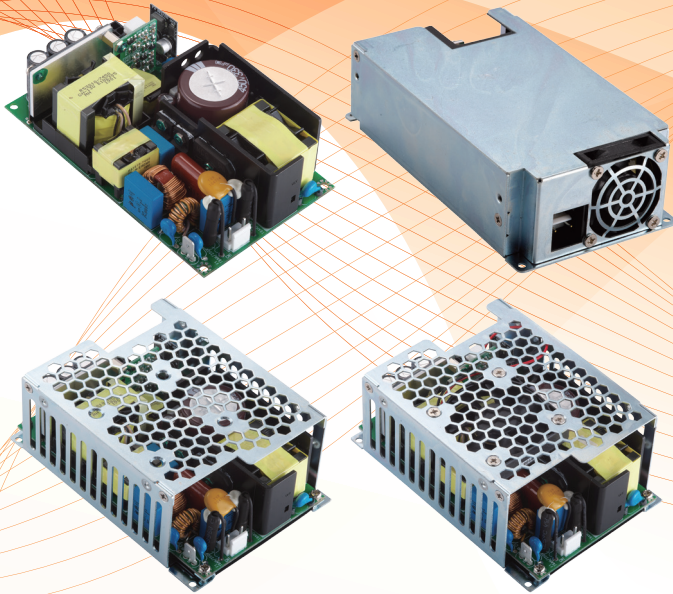
Dimension	L 127 × W 76 × H 38 (mm) 5" x 3" x 1.5"
Weight	350g (Ref.)

Open Frame Dual Output 450 Watt Series

ATM450S-F X X X □

O / P Voltage ←

Blank: Open Frame
X: Enclosed Type Without Fan
Y: Enclosed Type With Top Fan
Z: Enclosed Type With Side Fan



Features :

- IEC/EN/ANSI/AAMI ES60601-1 (Edition 3.1)
- Means of Protection : 2 X MOPP
- Touch Current : < 100µA
- IEC/EN/UL 62368-1
- 100-240VAC Universal Input
- 450W With Fan
- Standby 5V / 1A
- On & Off Remote Control
- 12V / 0.6A Output for Fan
- Regulated Output With Low Ripple Noise
- Modified and Custom Design Available
- 2 Years Warranty

Model	O/P Voltage	O/P Current		O/P for Fan	Watt	
		Conve-ction	With Fan*		Conve-ction	With Fan*
ATM450S-F120□	12.0V	20.8A	37.5A	12V /0.6A	260W	462W
	5V	1.0A				
ATM450S-F150□	15.0V	16.6A	30.0A	12V /0.6A	260W	462W
	5V	1.0A				
ATM450S-F190□	19.0V	13.0A	23.7A	12V /0.6A	260W	462W
	5V	1.0A				
ATM450S-F240□	24.0V	10.4A	18.8A	12V /0.6A	260W	463W
	5V	1.0A				
ATM450S-F360□	36.0V	6.9A	12.5A	12V /0.6A	260W	462W
	5V	1.0A				
ATM450S-F480□	48.0V	5.2A	9.4A	12V /0.6A	260W	463W
	5V	1.0A				
ATM450S-F540□	54.0V	4.6A	8.3A	12V /0.6A	260W	460W
	5V	1.0A				
ATM450S-F560□	56.0V	4.5A	8.0A	12V /0.6A	260W	460W
	5V	1.0A				

*With 13.8 CFM Fan

Input	
Voltage	100-240VAC
Line Frequency	50-60Hz
Current	5.3A-2.2A
Protection	Internal Primary Current Fuse

Output	
Load Regulation	±5% (Typical)
Ripple & Noise	2% Vp-p Max. for Output Voltage@ Full Load
Transient Response	0.5mS for 50% Load Change Typical
Hold-up Time	10mS @ Full Load
Protection	Short Circuit Protection / Over Voltage Protection / Over Current Protection / Over Temperature Protection

Electrical	
Topology	LLC
Dielectric Withstand	4000VAC Primary - Secondary
Touch Current	< 100µA
MTBF	300,000 Calculated Hours at 25°C , by Telcordia SR-332

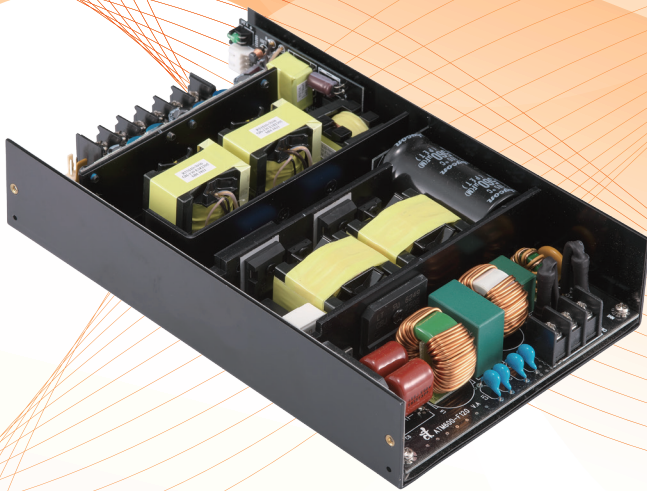
Environmental	
Operating Temperature	-20 to + 50°C
Storage Temperature	-20 to + 80°C
Relative Humidity	Operating : 20 to 80% RH
	Storage : 10 to 90% RH
Cooling	250W With convection cooling
	450W With fan cooling

Mechanical	
Dimension	Open Frame : L 127 × W 76 × H 34 (mm) 5" x 3" x 1.3"
	Enclosed Type : L 127 × W 87 × H 50 (mm) (Top Fan) 5" x 3.4" x 2.0"
Weight	Enclosed Type : L 148 × W 80 × H 41 (mm) (Side Fan) 5.9" x 3.2" x 1.6"
	Open Frame : 390g (Ref.) Enclosed Type(Top Fan) : 570g (Ref.) Enclosed Type(Side Fan) : 660g (Ref.)

Open Frame Power Supply 612 Watt Series

ATM600-F X X X

→ O / P Voltage



Features :

- IEC/EN/ANSI/AAMI ES60601-1 (Edition 3.1)
- Means of Protection : 2 X MOPP
- Touch Current : < 100µA
- IEC/EN/UL 62368-1
- 100-240VAC Universal Input
- Standby 5V / 1A
- On & Off Remote Control
- Efficiency up to 95%
- Regulated Output With Low Ripple Noise
- Modified and Custom Design Available
- 2 Years Warranty

Model	O/P Voltage	O/P Current	Standby	O/P for Fan	Watt
ATM600-F120	12.0V	50.0A	5V / 1A	12V / 0.6A	612W
ATM600-F240	24.0V	25.0A	5V / 1A	12V / 0.6A	612W
ATM600-F360	36.0V	16.6A	5V / 1A	12V / 0.6A	612W
ATM600-F480	48.0V	12.5A	5V / 1A	12V / 0.6A	612W

Input

Voltage	100-240VAC
Line Frequency	50-60Hz
Current	7.0A-2.7A
Protection	Internal Primary Current Fuse

Output

Load Regulation	±5% (Typical)
Ripple & Noise	1% Vp-p Max. for Output Voltage@ Full Load
Transient Response	0.5mS for 50% Load Change Typical
Hold-up Time	10mS @ Full Load
Protection	Short Circuit Protection / Over Voltage Protection / Over Current Protection / Over Temperature Protection

Electrical

Topology	LLC
Dielectric Withstand	4000VAC Primary - Secondary
MTBF	300,000 Calculated Hours at 25°C , by Telcordia SR-332

Environmental

Operating Temperature	-20 to + 50°C
Storage Temperature	-20 to + 80°C
Relative Humidity	Operating : 20 to 80% RH Storage : 10 to 90% RH
Cooling	Natural Convection Cooling

Mechanical

Dimension	L 203 × W 127 × H 40 (mm) 8" x 5" x 1.6"
Weight	1100g (Ref.)

Military Grade Power Supply



Features :

- Meet MIL-STD-461F CE101/CE102/RE102 Army EMI Standard
- 100-240VAC Universal Input
- Application : Military Rugged Laptop

O/P Voltage	O/P Current	Watt
19.0V	4.74A	90W
19.0V	10.50A	200W

Input	
Voltage	100-240VAC
Line Frequency	50-60Hz
Current	90W : 1.2A Max. / 200W : 2.8A Max.
Protection	Internal Primary Current Fuse
Configuration	IEC60320/C14

Output	
Load Regulation	±5% (Typical)
Ripple & Noise	90W : 1% Vp-p Max. for Output Voltage@ Full Load
	200W : 2% Vp-p Max. for Output Voltage@ Full Load
Transient Response	0.5mS for 50% Load Change Typical
Hold-up Time	10mS @ Full Load
Protection	Short Circuit Protection / Over Voltage Protection / Over Current Protection *Over Temperature Protection (200W)

Mechanical	
Case Dimension	90W : L 151 x W 64 x H 36 (mm)
	200W : L 204 x W 81 x H 42.5 (mm)

Gaming Slim Type Power Supply



Features :

- 100-240VAC Universal Input
- Height : Less than 1"
- Gallium Nitride Design for 270W
- High Power Density

O/P Voltage	O/P Current	Watt
19.0V	3.42A	65W
19.5V	3.33A	65W
24.0V	2.71A	65W
19.0V	14.20A	270W
19.5V	13.80A	270W
24.0V	11.25A	270W

Input

Voltage	100-240VAC
Line Frequency	50-60Hz
Current	65W : 1.4A Max. / 270W : 3.5A Max.
Protection	Internal Primary Current Fuse
Configuration	65W : IEC60320/C8 270W : IEC60320/C14

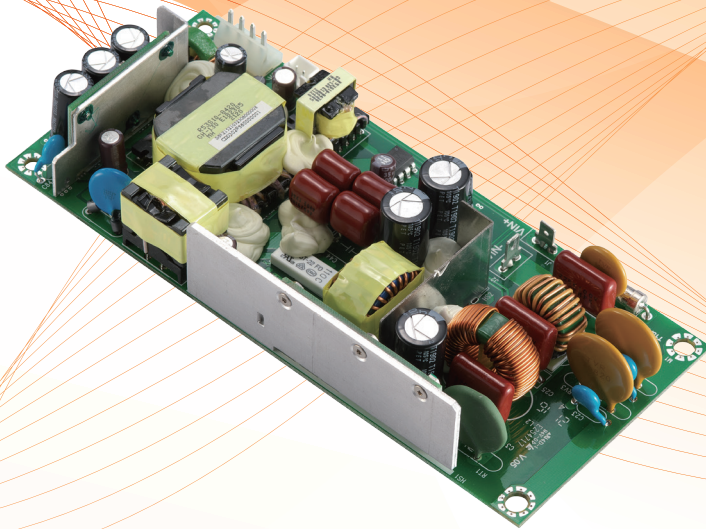
Output

Load Regulation	±5% (Typical)
Ripple & Noise	1% Vp-p Max. for Output Voltage@ Full Load
Transient Response	0.5mS for 50% Load Change Typical
Hold-up Time	10mS @ Full Load
Protection	Short Circuit Protection / Over Voltage Protection / Over Current Protection *Over Temperature Protection (270W)

Mechanical

Case Dimension	65W : L 120 x W 60 x H 16.8 (mm)
	270W : L 170 x W 84.3 x H 24.5 (mm)
Weight	65W : 220g (Ref.)
	270W : 630g (Ref.)

Negative Input Voltage DC-DC Power Supply



Features :

- Negative Input Voltage
- Application : Satellite

O/P Voltage	O/P Current	Watt
56.0V	5.35A	302W
3.3V	0.50A	

Input	
Voltage	-57Vdc ~ -40.5Vdc
Current	8.2A Max.
Mechanical	
Dimension	L 170 x W 75 x H 29 (mm)

600W Li-Ion Battery Charger



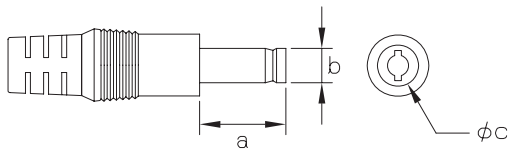
Features :

- 100-240VAC Universal Input
- 622.5W with fan cooling
- For charging Li-Ion battery

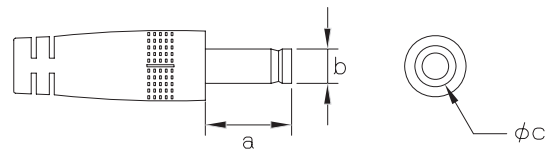
O/P Voltage	O/P Current	Watt
32.0V ~ 41.5V	15A (Constant Current)	622.5W (With fan cooling)

Input	
Voltage	100-240VAC
Line Frequency	50-60Hz
Current	7.0A Max.
Protection	Internal Primary Current Fuse
Configuration	IEC60320/C14
Mechanical	
Dimension	L 253 x W 114 x H 55 (mm)

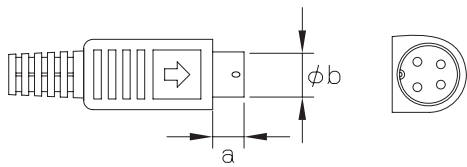
Output Plug Types



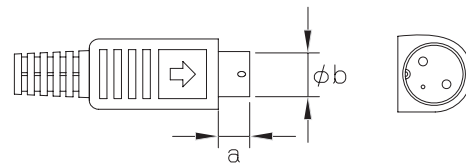
TYPE	a	b	c
OP-01	9.5	5.5	2.1



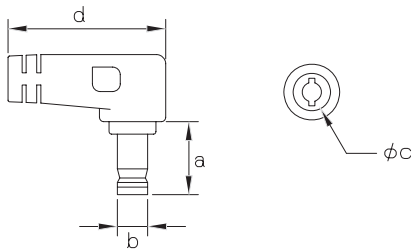
TYPE	a	b	c
OP-02	9.5	5.5	2.5



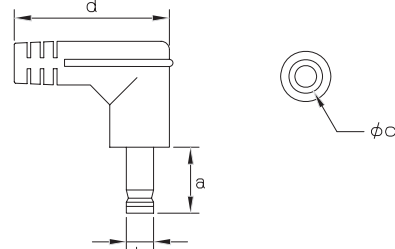
TYPE	a	b
OP-03	6	12



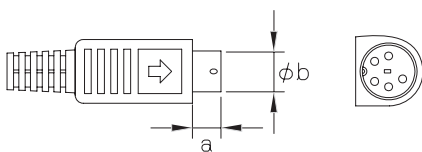
TYPE	a	b
OP-04	6	12



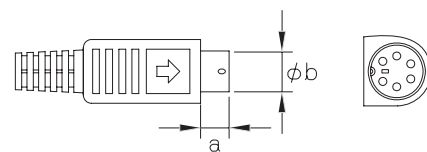
TYPE	a	b	c	d
OP-05	9.5	5.5	2.1	18.5



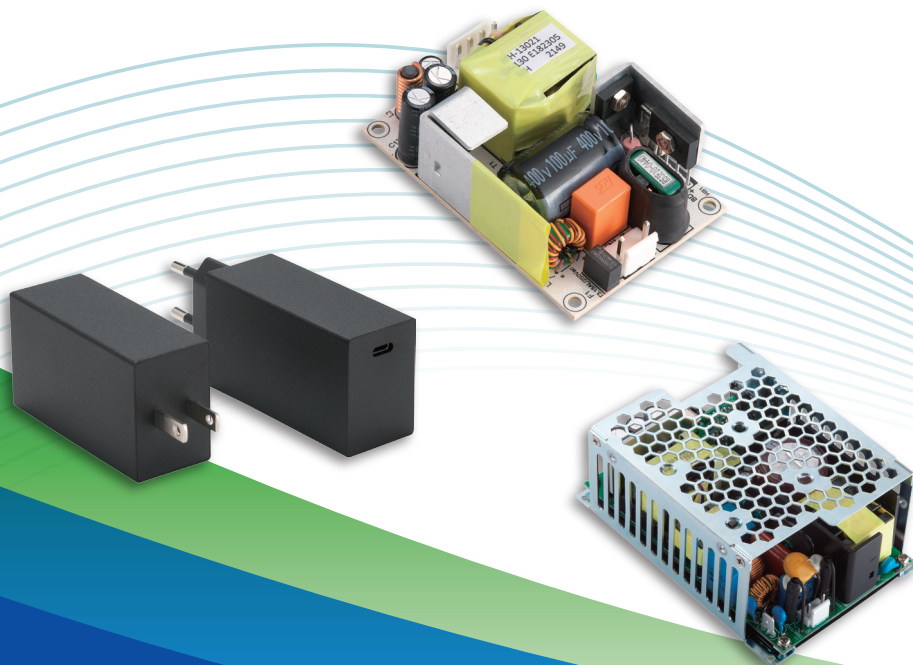
TYPE	a	b	c	d
OP-06	9.5	5.5	2.1	18.5



TYPE	a	b
OP-07	6	12



TYPE	a	b
OP-08	6	12



阿達特科技股份有限公司
ADAPTER TECHNOLOGY CO., LTD.

HEADQUARTERS

新北市中和區連城路258號6樓
6F, No.258, LianCheng Rd., Zhonghe District,
New Taipei City, 23553, Taiwan
Tel:+886-2-8226-2279
Fax:+886-2-8226-2238
E-mail:service@adaptech.com.tw
<http://www.adaptech.com.tw>

CHINA FACTORY

廣東省東莞市石排鎮下沙劉屋帝豐工業區2棟
Di Feng Gong Ye Qu 2 Hao Xiasha Liuwu Vlg.
Shipai Town Dong Guan, Guang Dong 523350
Tel:+86-769-8905-5998
+86-769-8136-9008



PHILIPPINES FACTORY

Block 8-C Lot 1, Phase 3, Ltd-Sec, Santiago,
Malvar, Region IV-A, Batangas, Philippines