

NEW

I.T.E.

Medical

USB Type-C P.D. 45 / 65 Watt Series

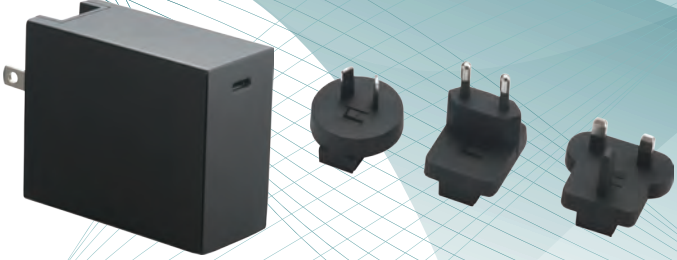
Wall Mount Type
USA / Japan / Taiwan / AC Plug Changeable

ATN045A3 - W200U

U : US Plug / Changeable Plug

ATN065A3 - W200U

U : US Plug / Changeable Plug



Features :

- IEC/EN/ANSI/AAMI ES60601-1 (Edition 3.2)
- EMC : IEC60601-1-2 (Edition 4.1)
- IEC/EN/UL 62368-1 3rd Edition
- Means of Protection : 2 X MOPP
- Touch Current : < 100µA
- 100-240VAC Universal Input
- P.D. 3.0 / QC 4.0+ / QC 4.0
- Regulated Output With Low Ripple Noise
- Safety Agency Requirements and EMI/EMS Certified
- Modified and Custom Design Available
- 2 Years Warranty

| Model | O/P Voltage | O/P Current | Watt |
|----------------|-------------|-------------|------|
| ATN045A3-W200U | 5.0V | 3.00A | 15W |
| | 9.0V | 3.00A | 27W |
| | 12.0V | 3.00A | 36W |
| | 15.0V | 3.00A | 45W |
| | 20.0V | 2.25A | 45W |
| ATN065A3-W200U | 5.0V | 3.00A | 15W |
| | 9.0V | 3.00A | 27W |
| | 12.0V | 3.00A | 36W |
| | 15.0V | 3.00A | 45W |
| | 20.0V | 3.25A | 65W |

| Input | |
|----------------|------------------------------------|
| Voltage | 100-240VAC |
| Line Frequency | 50-60Hz |
| Current | 45W : 1A-0.5A / 65W : 1.6A-0.7A |
| Protection | Internal Primary Current Fuse |
| Configuration | U for US Plug / AC Plug Changeable |

| Output | |
|--------------------|--|
| Load Regulation | ±5% (Typical) |
| Ripple & Noise | 200m Vp-p Max. for Output Voltage@ Full Load |
| Transient Response | 0.5mS for 50% Load Change Typical |
| Hold-up Time | 10mS @ Full Load |
| Protection | Short Circuit Protection / Over Voltage Protection / Over Current Protection |

| Electrical | |
|----------------------|--|
| Topology | Switching Flyback |
| Dielectric Withstand | 4000VAC Primary - Secondary |
| Touch Current | < 100µA |
| Efficiency | Meet DoE Level VI, ErP Stage 2, CoC Tier 2 |
| EMC Standards | EN55011 |
| | EN61000-3-2,3 EN61000-4-2,3,4,5,6,8,11 |
| MTBF | 300,000 Calculated Hours at 25°C , by Telcordia SR-332 |

| Environmental | |
|-----------------------|----------------------------|
| Operating Temperature | -20 to + 40°C |
| Storage Temperature | -20 to + 80°C |
| Relative Humidity | Operating : 20 to 80% RH |
| | Storage : 10 to 90% RH |
| Cooling | Natural Convection Cooling |

| Mechanical | |
|----------------|-----------------------------|
| Case Dimension | L 53.5 × W 31.5 × H 58 (mm) |
| Weight | ATN045A3 : 120g (Ref.) |
| | ATN065A3 : 180g (Ref.) |