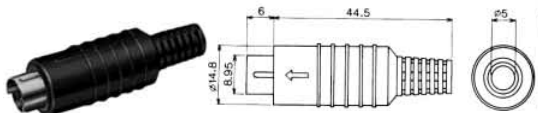




MINI-DIN PLUGS & JACKS

No.MP-371/3 ~ 8

MINI. CIRCULAR CONNECTOR SOLDER TYPE



| No. of Contact | 3P | 4P | 5P | 6P | 7P | 8P |
|-----------------------|----------|----------|----------|----------|----------|----------|
| CONTACT CONFIGURATION | | | | | | |
| Model | MP-371/3 | MP-371/4 | MP-371/5 | MP-371/6 | MP-371/7 | MP-371/8 |

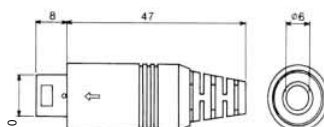
No.MP-374

MINI. CIRCULAR CONNECTOR 4P FOR S-VHS

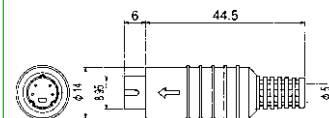


No.MP-371/9 ~ 10

MINI. CIRCULAR CONNECTOR SOLDER TYPE

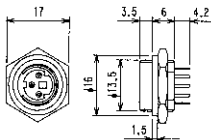


| No. of Contact | 9P | 10P |
|-----------------------|----------|-----------|
| CONTACT CONFIGURATION | | |
| No. of Contact | MP-371/9 | MP-371/10 |



No.MJ-381/3 ~ 8

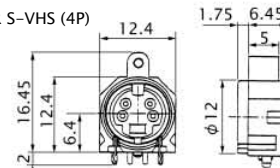
MINI DIN SOCKET PANEL MOUNT TYPE



| Arrange-ment of Contacts | | | | | | |
|--------------------------|----------|----------|----------|----------|----------|----------|
| Model | MJ-381/3 | MJ-381/4 | MJ-381/5 | MJ-381/6 | MJ-381/7 | MJ-381/8 |

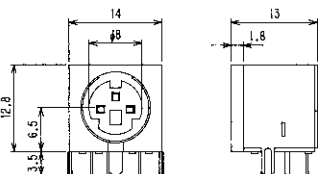
No.MJ-929A0

MINI DIN SOCKET FOR S-VHS (4P)



No.MJ-373/3 ~ 9

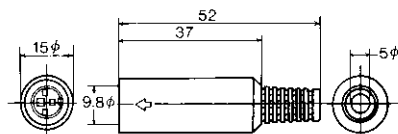
MINI DIN SOCKET SERIES



| Arrange-ment of Contacts | | | | | | | |
|--------------------------|----------|----------|----------|----------|----------|----------|----------|
| Model | MJ-373/3 | MJ-373/4 | MJ-373/5 | MJ-373/6 | MJ-373/7 | MJ-373/8 | MJ-373/9 |

No.MJ-372/3 ~ 9

MINI DIN IN-LINE SOCKET



| Arrange-ment of Contacts | | | | | | | |
|--------------------------|----------|----------|----------|----------|----------|----------|----------|
| Model | MJ-372/3 | MJ-372/4 | MJ-372/5 | MJ-372/6 | MJ-372/7 | MJ-372/8 | MJ-372/9 |

ミニDINケーブル

MINI DIN CABLE L=1500mm



Available Product Line

| MODEL No. | |
|--------------|-----------------------------------------------------------|
| No.MC-MD3PW | MINI DIN 3P PLUG + MINI DIN 3P PLUG |
| No.MC-MD4PW | MINI DIN 4P PLUG + MINI DIN 4P PLUG |
| No.MC-MD4SPW | MINI DIN 4P PLUG (S端子) + MINI DIN 4P PLUG (S端子) for S-VHS |
| No.MC-MD5PW | MINI DIN 5P PLUG + MINI DIN 5P PLUG |
| No.MC-MD6PW | MINI DIN 6P PLUG + MINI DIN 6P PLUG |
| No.MC-MD7PW | MINI DIN 7P PLUG + MINI DIN 7P PLUG |
| No.MC-MD8PW | MINI DIN 8P PLUG + MINI DIN 8P PLUG |

Available Product Line

| MODEL No. | |
|-------------|---------------------------------------|
| No.MC-MD3PJ | MINI DIN 3P PLUG + MINI DIN 3P SOCKET |
| No.MC-MD4PJ | MINI DIN 4P PLUG + MINI DIN 4P SOCKET |
| No.MC-MD5PJ | MINI DIN 5P PLUG + MINI DIN 5P SOCKET |
| No.MC-MD6PJ | MINI DIN 6P PLUG + MINI DIN 6P SOCKET |
| No.MC-MD8PJ | MINI DIN 8P PLUG + MINI DIN 8P SOCKET |